



This project has received funding from the European Union's Seventh Framework Programme for research, technological development and demonstration under grant agreement no 613247.

# IS THERE A RELATION BETWEEN WELFARE AND INTER-AGE REALLOCATION REGIMES?

AGENTA Final Conference,  
Vienna, November 20, 2017

**agenta**

Ageing Europe – An Application of  
National Transfer Accounts for Explaining  
and Projecting Trends in Public Finances

Tanja Istenič  
Lili Vargha  
Jože Sambt

Faculty of Economics,  
University of Ljubljana  
&  
Hungarian Demographic  
Research Institute

# MOTIVATION

- The EU countries differ in their cultural and institutional settings → we can group them into welfare regimes
- PAST RESEARCH
  - At the beginning the focus was mainly on the public transfers
  - Recently, importance of the private transfers has been recognized (e.g. Albertini et al., 2007)
  - Some of them focus on public and private transfers (e.g. Mudrazija, 2016; Saraceno & Keck, 2010)
    - Based on SHARE data (only individuals of age 50+)
    - Measuring private transfers indirectly

# MOTIVATION

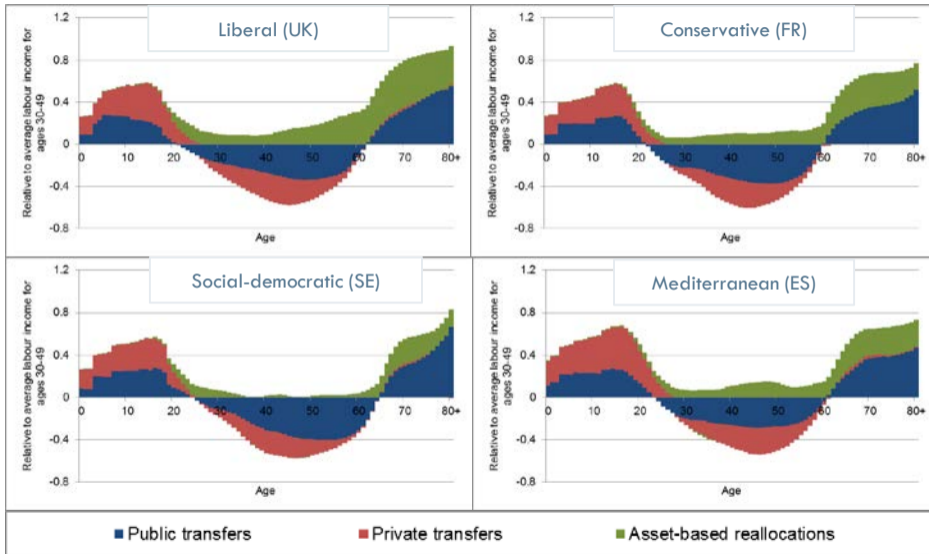
- The EU countries differ in their cultural and institutional settings → we can group them into welfare regimes
- PAST RESEARCH
  - At the beginning the focus was mainly on the public transfers
  - Recently, importance of the private transfers has been recognized (e.g. Albertini et al., 2007)
  - Some of them focus on public and private transfers (e.g. Mudrazija, 2016; Saraceno & Keck, 2010)
    - Based on SHARE data (only individuals of age 50+)
    - Measuring private transfers indirectly

*„The most difficult part is to measure what goes on behind the family walls.“*  
(Esping-Andersen, 1999)

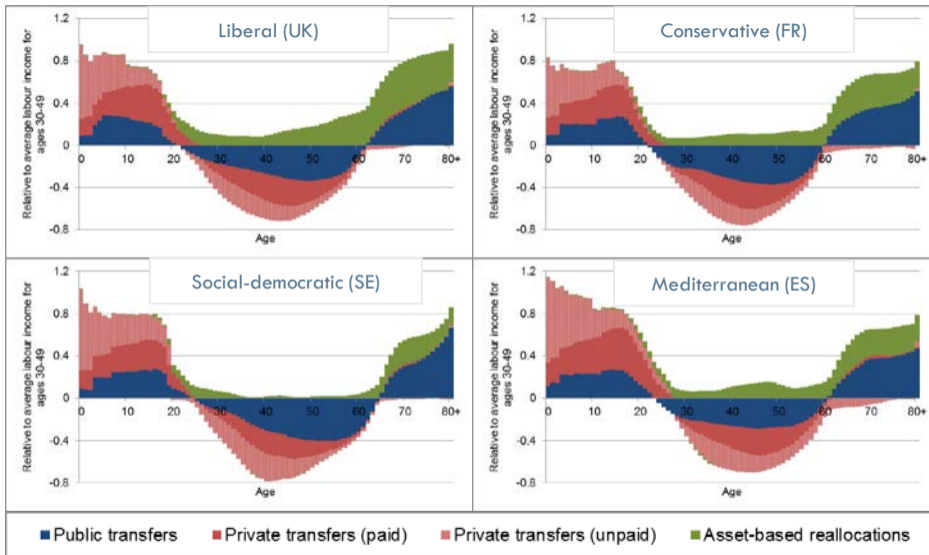
# DATA AND METHODS

- National (Time) Transfer Accounts data
- Comprehensive measurement of inter-age reallocations
- Link with the typical characteristics of welfare regimes
  - Esping-Andersen's (1990) typology:
    - Liberal (Anglo-Saxon)
    - Conservative (Continental European)
    - Social-democratic (Nordic)
    - Additionally: Mediterranean regime
  - A descriptive presentation for the regime prototypes
  - Calculating values of five different indicators, capturing the main characteristics of welfare regimes, for 10 EU countries

# THE LCD FINANCING FOR THE PROTOTYPE COUNTRIES, 2010



# THE TOTAL LCD FINANCING FOR THE PROTOTYPE COUNTRIES, 2010



# THE IMPORTANCE OF PUBLIC TRANSFERS IN THE LCD FINANCING

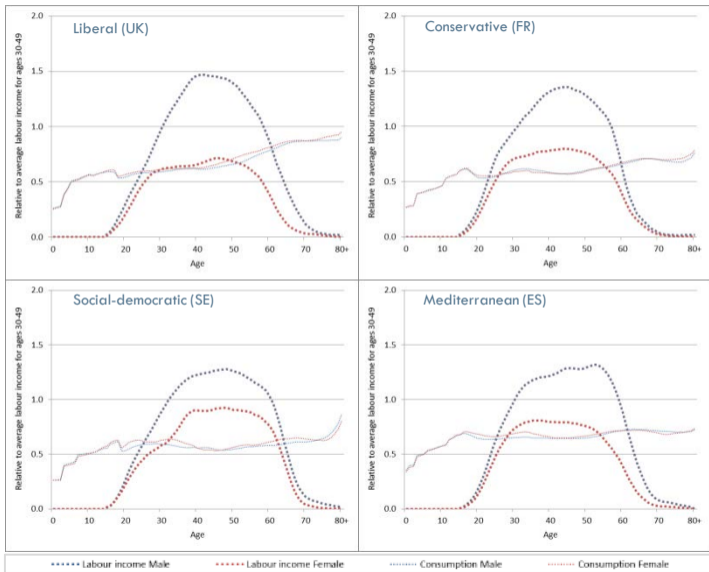
## The young

## The elderly

Country	LCD financing of the young: TG/(TG+TF)	Country	<b>Total</b> LCD financing of the young: TG/(TG+TTF)	Country	LCD financing of the elderly: TG/(TG+ABR)
SE	0.459	SE	0.278	AT	0.743
FR	0.422	FR	0.271	SI	0.724
AT	0.412	AT	n.a.	FI	0.706
HU	0.410	HU	n.a.	SE	0.659
SI	0.382	SI	0.251	HU	0.644
UK	0.374	UK	0.245	IT	0.586
FI	0.370	FI	0.242	ES	0.561
ES	0.358	DE	0.221	FR	0.531
DE	0.353	ES	0.219	DE	0.460
IT	0.342	IT	0.191	UK	0.413

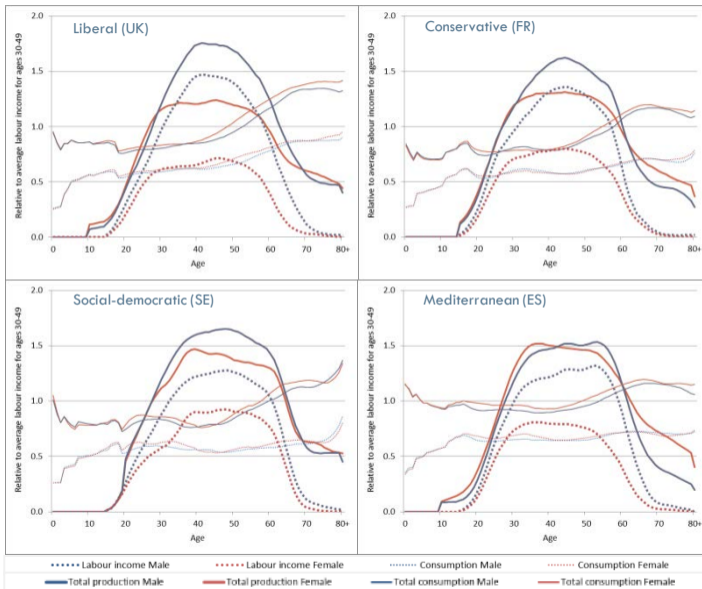
\*n.a. = not applicable

# GENDER-SPECIFIC CONSUMPTION AND LABOUR INCOME FOR THE PROTOTYPE COUNTRIES, 2010





# GENDER-SPECIFIC CONSUMPTION AND PRODUCTION FOR THE PROTOTYPE COUNTRIES, 2010



## GENDER GAP IN LIFE CYCLE SURPLUS, 2010

Country	Gender gap in LCS relative to total labour income (in %)	Country	Gender gap in <b>total</b> LCS relative to total labour income (in %)
SI	8.8	SI	-1.1
FI	12.4	ES	2.1
HU	14.6	IT	2.9
SE	15.2	FI	3.2
FR	20.0	SE	9.0
ES	20.3	FR	9.2
IT	24.0	UK	17.8
AT	26.4	DE	18.8
UK	26.6	AT	n.a.
DE	28.1	HU	n.a.

\*n.a. = not applicable

## SUMMARY OF RESULTS – LEVEL OF WELFARE STATE

Country	LCD financing of the young	Total LCD financing of the young	LCD financing of the elderly	Gender gap in LCS	Gender gap in total LCS	Total
AT	0.412	n.a.	0.743	26.4	n.a.	Medium
FI	0.370	0.242	0.706	12.4	3.2	High
FR	0.422	0.271	0.531	20.0	9.2	Medium
DE	0.353	0.221	0.460	28.1	18.8	Low
HU	0.410	n.a.	0.644	14.6	n.a.	High
IT	0.342	0.191	0.586	24.0	2.9	Medium
SI	0.382	0.251	0.724	8.8	-1.1	High
ES	0.358	0.219	0.561	20.3	2.1	Medium
SE	0.459	0.278	0.659	15.2	9.0	High
UK	0.374	0.245	0.413	26.6	17.8	Low

\*n.a. = not applicable

— low      — medium      — high

## CONCLUSION

- 3 groups of countries:
  - Low level of welfare state = liberal: UK, DE
  - Medium level of welfare state = conservative: AT, FR, IT, ES
  - High level of welfare state = social-democratic: FI, HU, SI, SE
- A clear connection between welfare and inter-age reallocation regimes
- Main exception: Germany
- Limitation: qualitative approach

# ACKNOWLEDGEMENT



This project has received funding from the European Union's Seventh Framework Programme for research, technological development and demonstration under grant agreement no 613247.



Wittgenstein Centre

FOR DEMOGRAPHY AND  
GLOBAL HUMAN CAPITAL  
A COLLABORATION OF IASA, YSI-GAN, WU

agenta