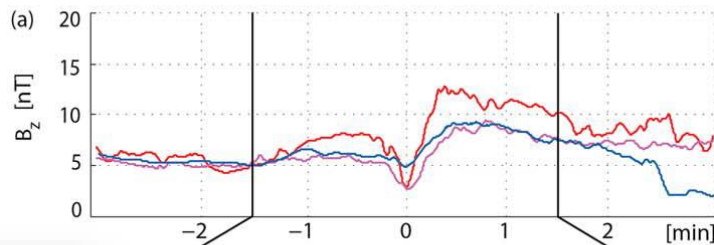
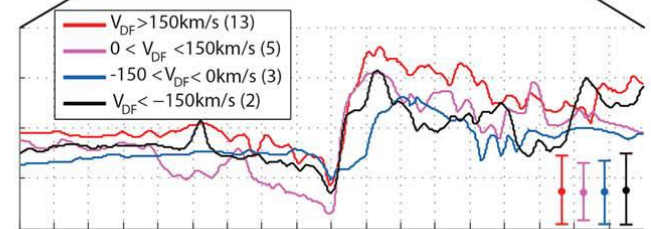
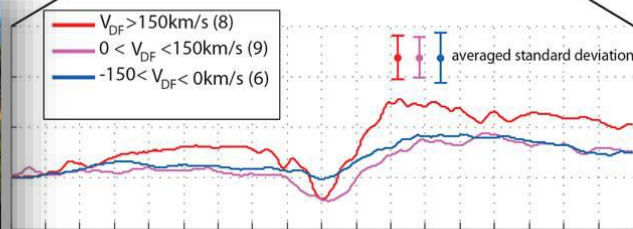
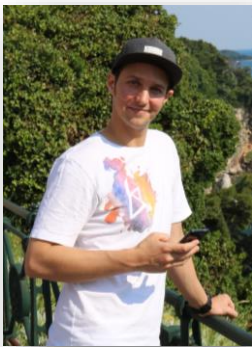
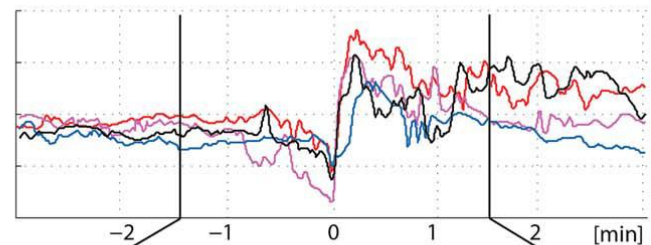


Cluster – superposed epoch



MMS – superposed epoch



EINLADUNG ZUM VORTRAG

SMALL-SCALE PROPERTIES OF MAGNETOTAIL DIPOLARIZATION FRONTS OBSERVED BY MMS

DANIEL SCHMID

Harbin Institute of Technology Shenzhen, China

KONTAKT
 MARTIN VOLWERK
 T +43 316 4120-575
 MARTIN.VOLWERK@OEAW.AC.AT

