

THE TEAM

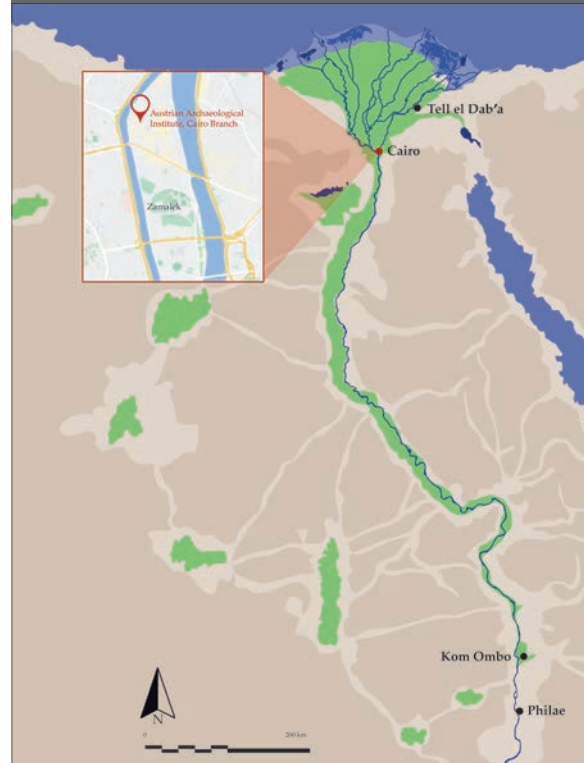
Priv.-Doz. Mag. Dr. Irene Forstner-Müller | Head
Dr. Pamela Rose | Senior Scientist, Associated Researcher
Sarah Abou el Eisch | Administration

LECTURE SERIES AUSTRIAN STUDIES IN EGYPTIAN ARCHAEOLOGY (ASEA)

The lecture series »Austrian Studies in Egyptian Archaeology« (ASEA) was introduced in Spring 2022 and presents current research projects and excavations of the Cairo Branch, the Austrian Academy of Sciences and its cooperation partners. The series is intended to bring together experts from the fields of Egyptology, prehistory, classical archaeology, philology, papyrology and various disciplines including geoarchaeology, raw material studies, archaeozoology and many more.

PUBLICATIONS

The Cairo Branch issues the monograph series *Untersuchungen der Zweigstelle Kairo (UZK)*, reflecting the core research topics of the projects currently in progress. Additionally, contributions appear in the major series and journals of the Austrian Archaeological Institute on a regular basis. All publication series and journals are subject to an international peer review process, which is coordinated and monitored by the Austrian Academy of Sciences. This ensures high scientific standards.



Location of the Austrian Archaeological Institute, Cairo Branch (●) and the long-term field projects (●) (graphics: A. Hassler)

CONTACT:

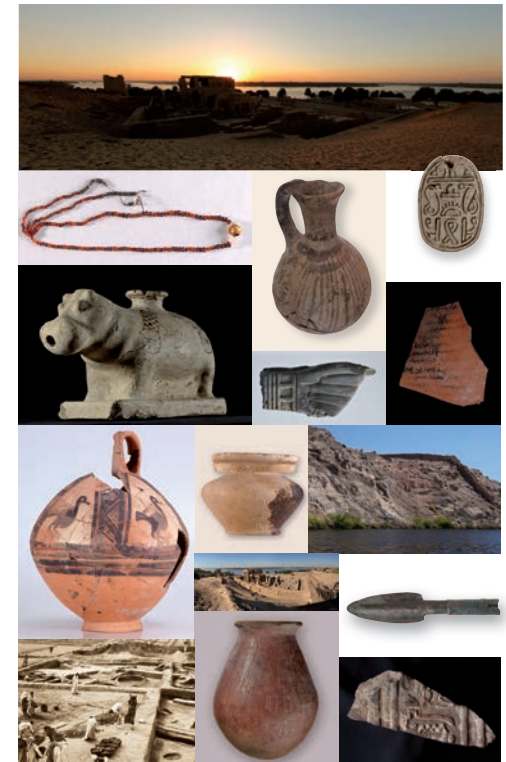
Austrian Archaeological Institute
Cairo Branch
Austrian Academy of Sciences
6A, Ismail Mohamed Street, Apt. 62
Zamalek, Cairo, Egypt
T (+20 2) 273 623 56
F (+20 2) 273 554 26
oeai-kairo@oeaw.ac.at

IMPRINT:

Austrian Academy of Sciences
Dr. Ignaz Seipel-Platz 2,
1010 Vienna, Austria
Content: Austrian Archaeological Institute, Cairo
Copyright: Austrian Archaeological Institute
Graphics: Austrian Archaeological Institute

WWW.OEAW.AC.AT

ÖAW
AUSTRIAN
ACADEMY OF
SCIENCES



CAIRO BRANCH OF THE AUSTRIAN ARCHAEOLOGICAL INSTITUTE



THE CAIRO BRANCH

The Cairo Branch of the Austrian Archaeological Institute of the Austrian Academy of Sciences (OeAW) is Austria's only permanent research facility for archaeological fieldwork in Egypt and notified as »Office of the Scientific Counsellor of the Austrian Embassy«.

THE ROLE OF THE CAIRO BRANCH

The Cairo Branch's archaeological research focuses on Egypt and the surrounding countries including research on material culture and culture-historical studies, and their subsequent scientific publication. The research projects are carried out in cooperation with Egyptian and international institutions. In addition, the further training of young academics in archaeological field research is an important task.

The branch office acts as a contact for all Austrian institutions wishing to conduct field research in Egypt, and as a contact for any relevant Egyptian institutions, especially the Ministry of Tourism and Antiquities.

The institute houses an Egyptological library, which is open to Egyptian and international students, as well as visiting scholars. It contains approximately 9000 monographs, series and journals, focusing principally on works on the archaeology of pharaonic Egypt and the Near East, and especially those relevant to the institute's key interests, the sites of Tell el-Dab'a, Kom Ombo and Hisn al-Bab.



Fort of Hisn al-Bab (photo: L. Fliesser)



Kom Ombo, Temple and Tell with the Austrian Excavation (photo: N. Gail)

Funded within the framework of the archive of the Austrian Academy of Sciences and travel grant GO.INVESTIGATIO a new grant program for ambitious young and senior scholars researching in Egypt is provided. A yearly call for proposals allows applications on a regular basis and gives extensive opportunities to network with local researchers. The institute is offering free accommodation and support for grantees when conducting research in Cairo.

RESEARCH

The institute's principal research focuses on past societies and their built environment, landscapes and main social-cultural studies.

Chronologically, the research projects cover a wide time span, from the Pharaonic period (Kom Ombo, Tell el-Dab'a) through the Roman to early medieval period (Hisn al-Bab, Nag et Tawil, Philae) to the modern period (the Nubian village at Hisn al-Bab, the Anglo-Egyptian fort at Kom Ombo).

PROJECTS

Research covers sites from the Delta in Lower Egypt to the First Cataract in Upper Egypt.

Long term excavation projects are being conducted at Tell el-Dab'a in the Lower Egyptian north eastern Delta (since 1966) and in Kom Ombo close to the First Cataract in Upper Egypt (since 2017). Epigraphic investigations take place in cooperation with the University of Leipzig (Holger Kockelmann) at the Temple of Philae.

Further short-term field investigations take place in Hisn al-Bab and Aswan.

The Kom Ombo project – co-financed by the Austrian Science Fund – investigates the development of the Upper Egyptian city of Kom Ombo from the Early Dynastic period to the 19th century AD.

The institute's long-term excavations at Tell el-Dab'a in the eastern Nile Delta have led to a series of research projects focusing on:

- Landscape and cityscape
- The harbour
- Archaeological remains of temple rituals

and an additional range of related research projects which can be found on the institute's webpage (<https://www.oeaw.ac.at/en/oeai/institute/branches/cairo/excavations-projects>)



Tell el-Dab'a, Area R/III (photo: M. Weissl)