



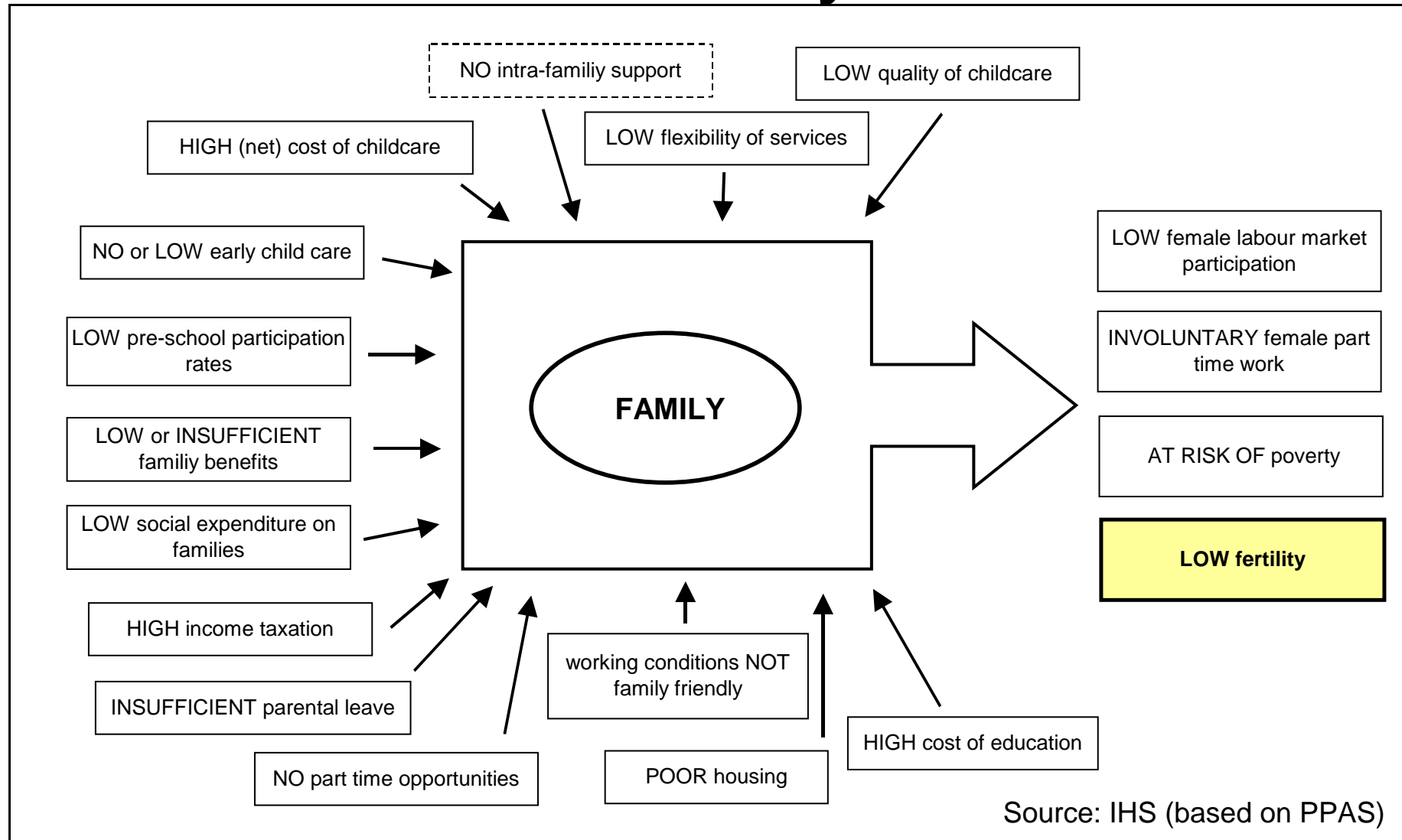
How different is the outcome of EU family policies?

Michaela Gstrein and Liliana Mateeva

International Conference: 'Can policies enhance fertility in Europe?'

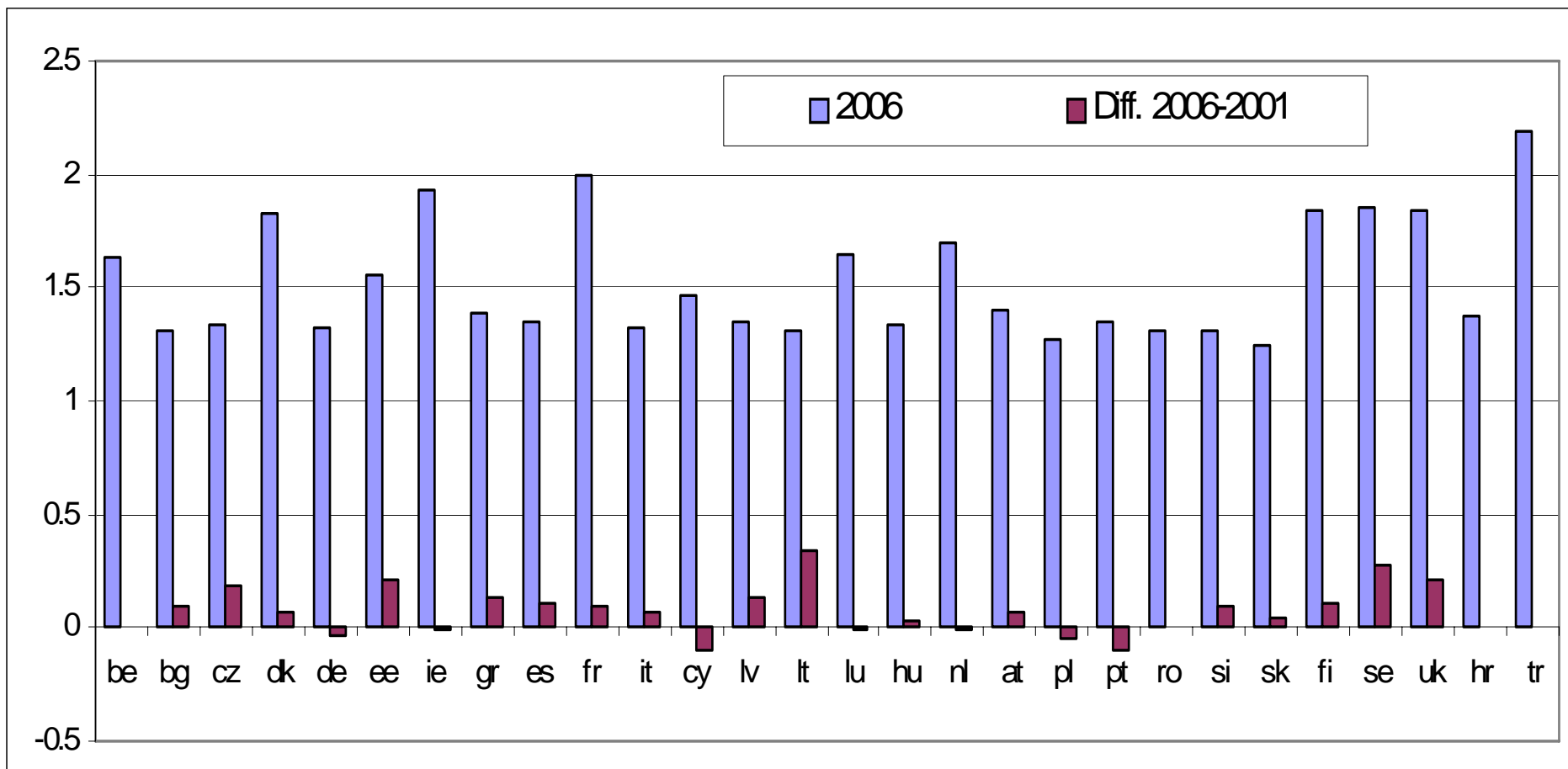
Vienna, 6-7 December 2007

Possible policy deficiencies and effects on fertility



Source: IHS (based on PPAS)

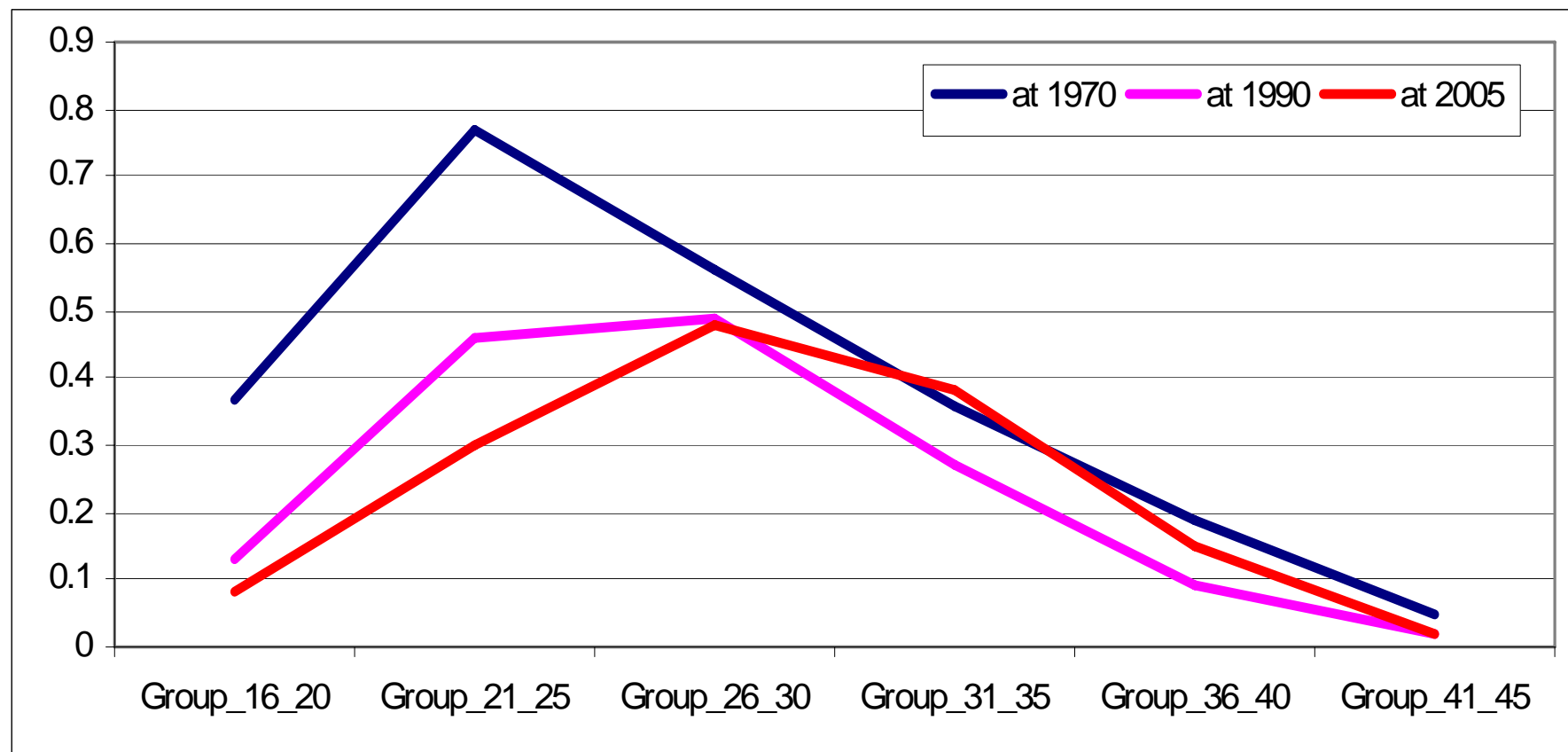
Recent Fertility Trends (TFR)



Source: IHS based on EUROSTAT data (extraction: 11/2007)

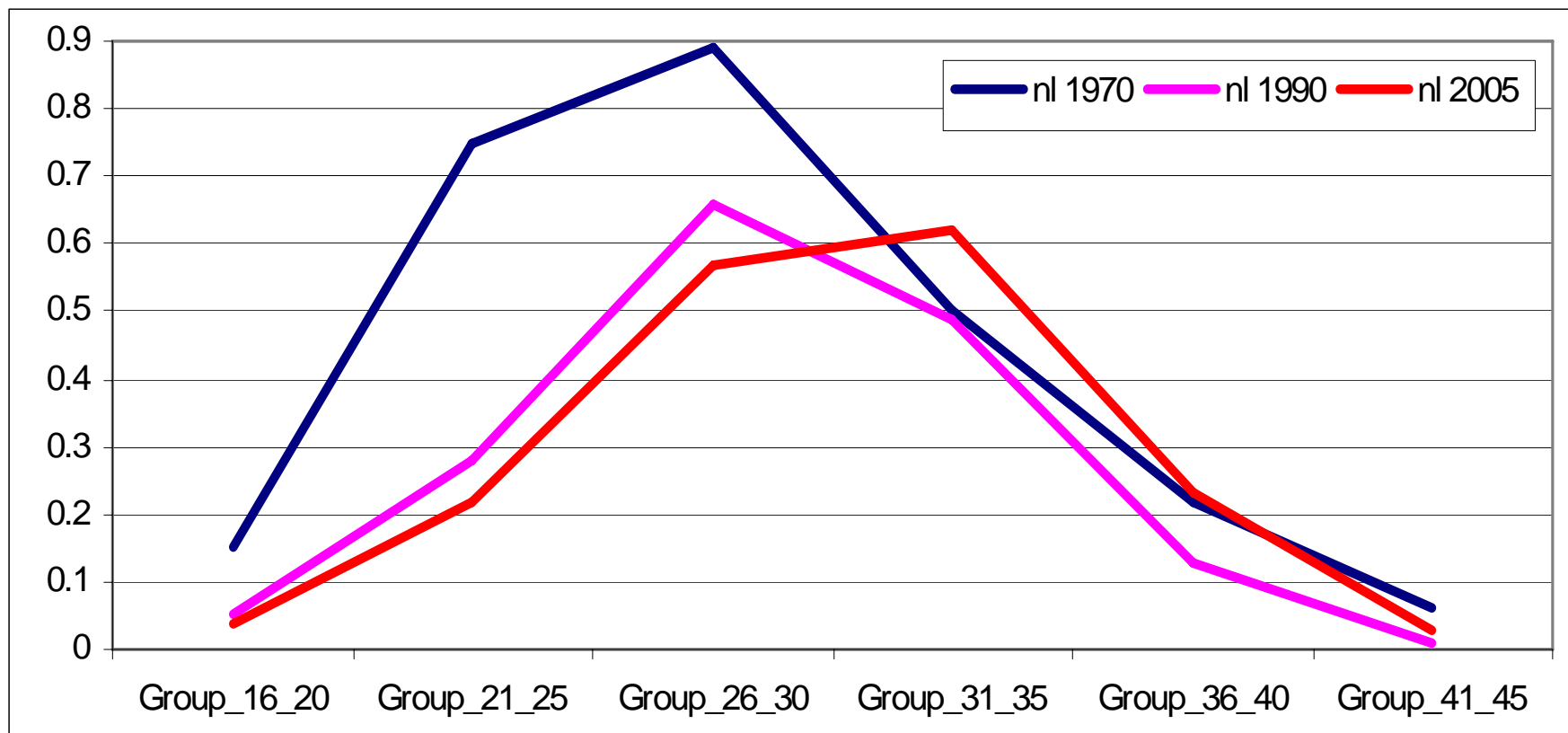
Note: data for ES, IT, BG, TR = 2005; BE = 2004; data for TR & BE (extraction: 01/2007)

Austrian Cohort fertility (1970, 1990, 2005)



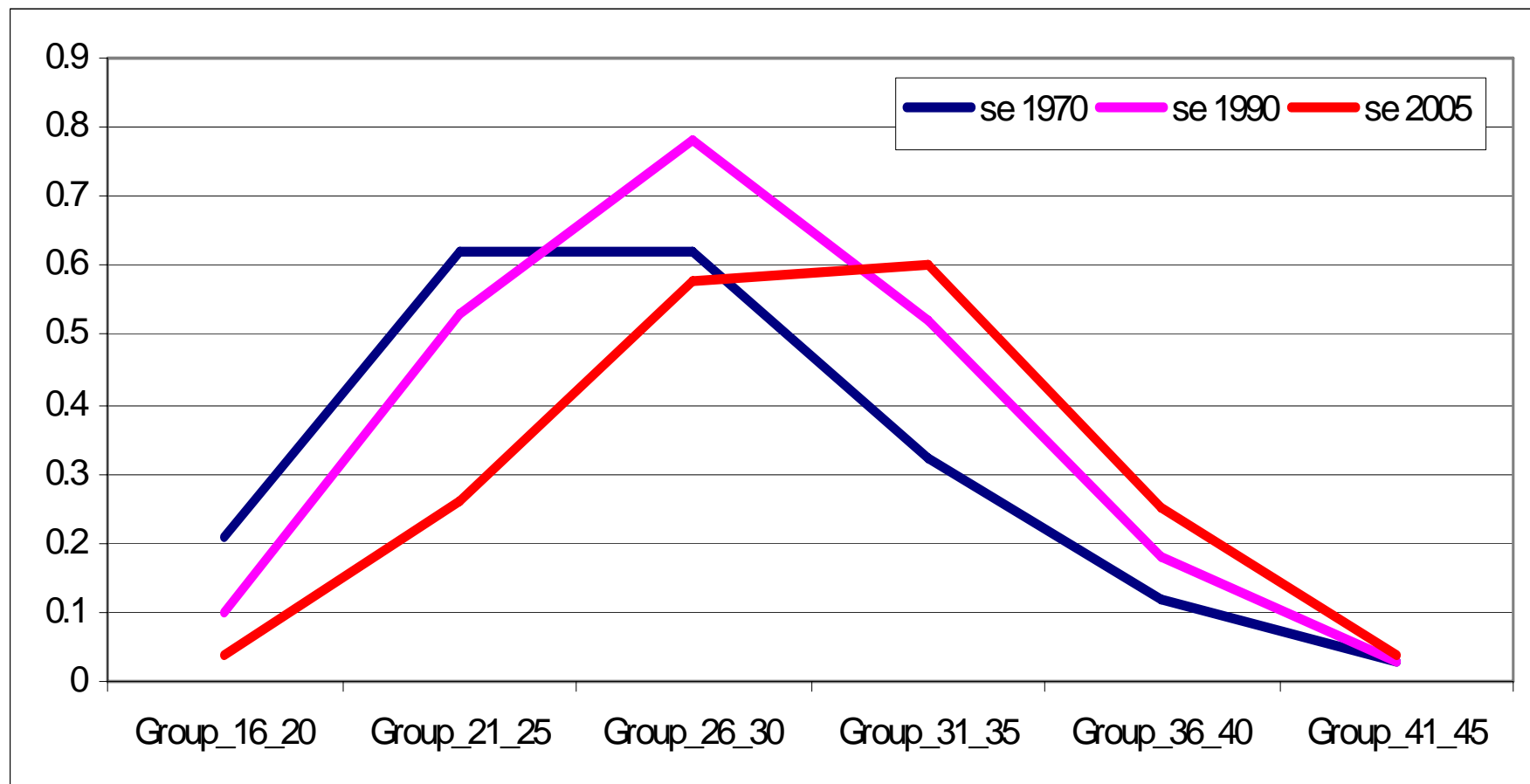
Source: IHS based on data from Eurostat (extraction: 10/2007)

Cohort Fertility in NL (1970, 1990, 2005)



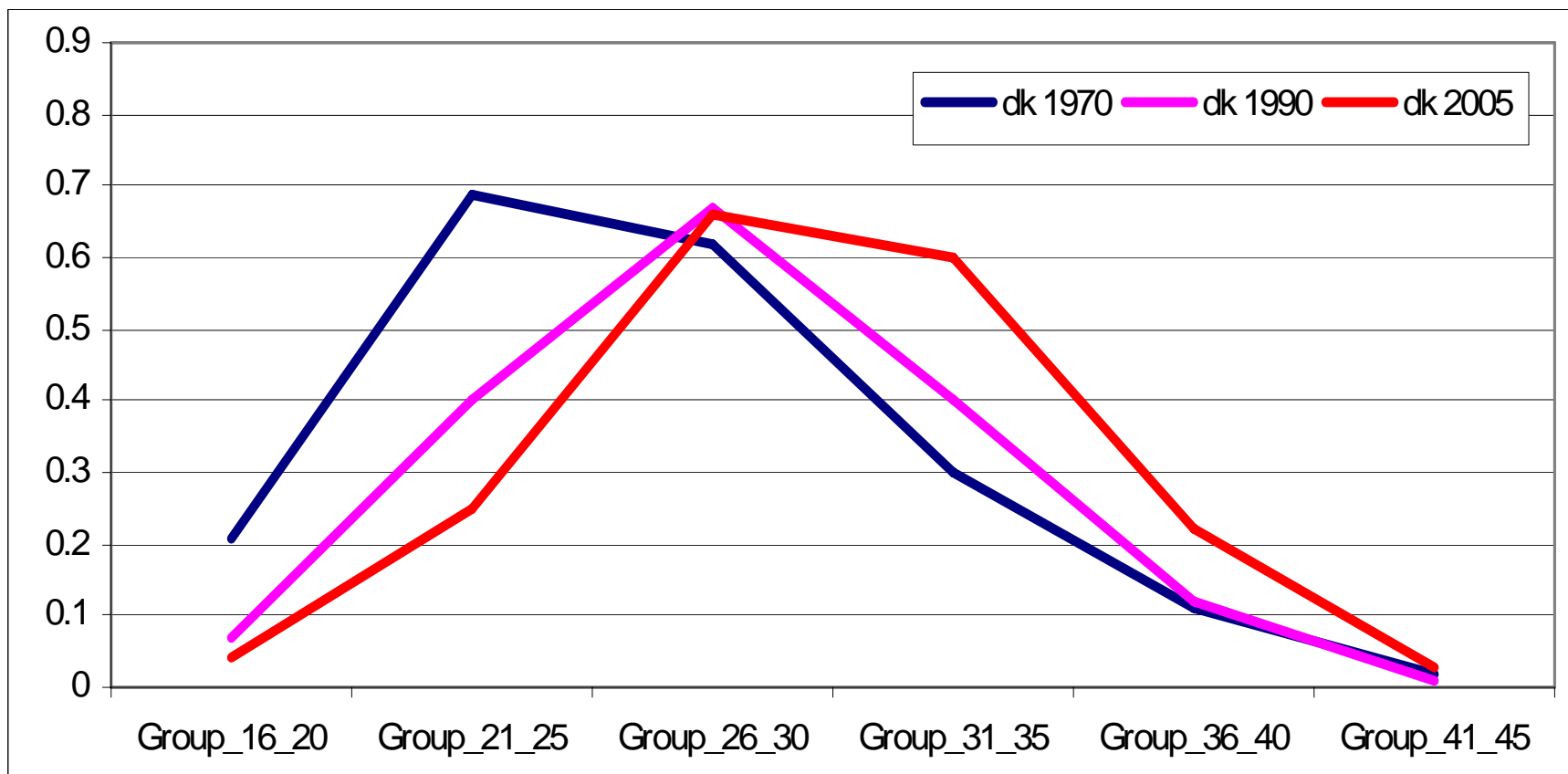
Source: IHS based on data from Eurostat (extraction: 10/2007)

Cohort fertility in SE (1970, 1990, 2005)



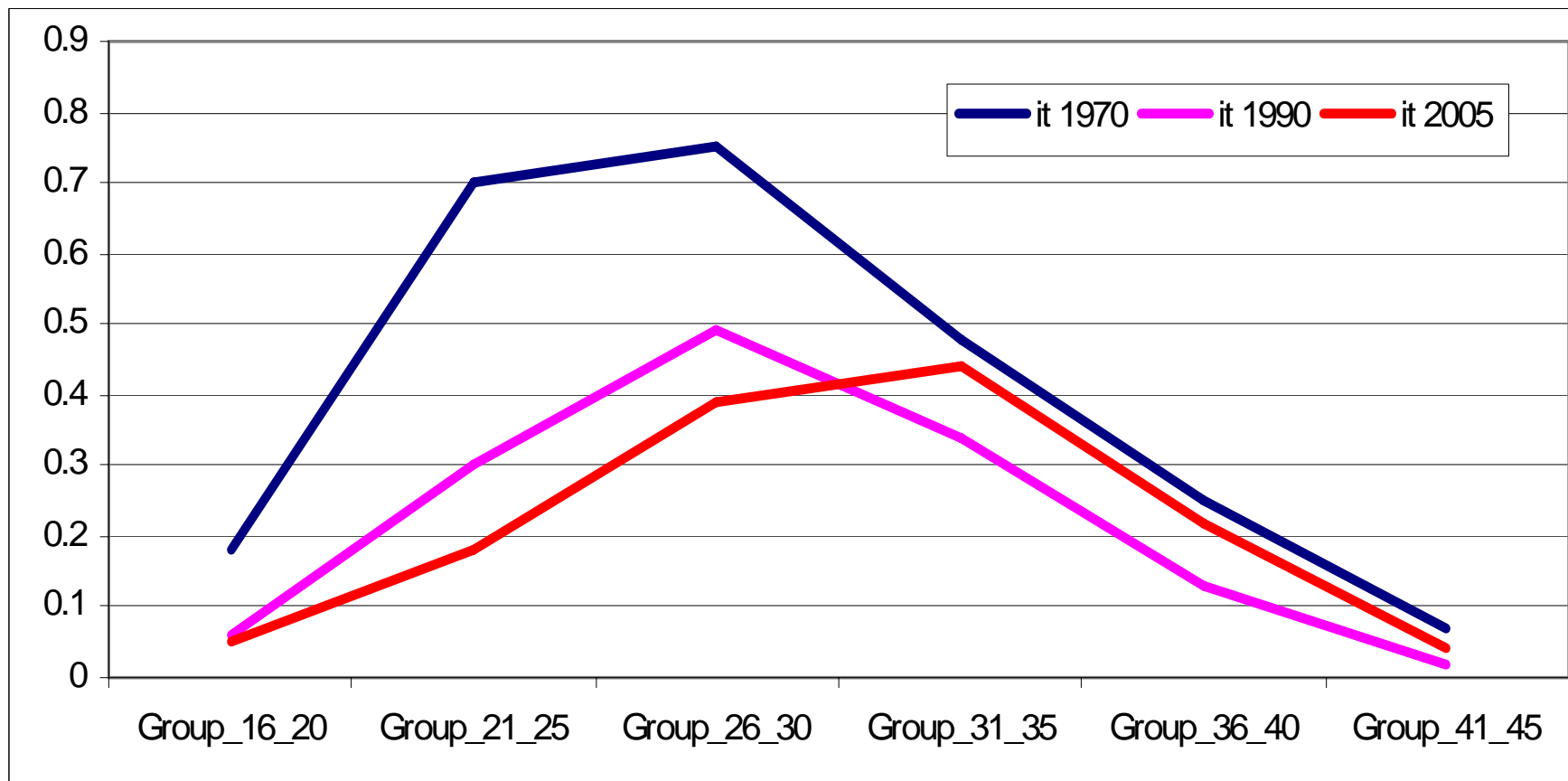
Source: IHS based on data from Eurostat (extraction: 10/2007)

Cohort fertility in DK (1970, 1990, 2005)



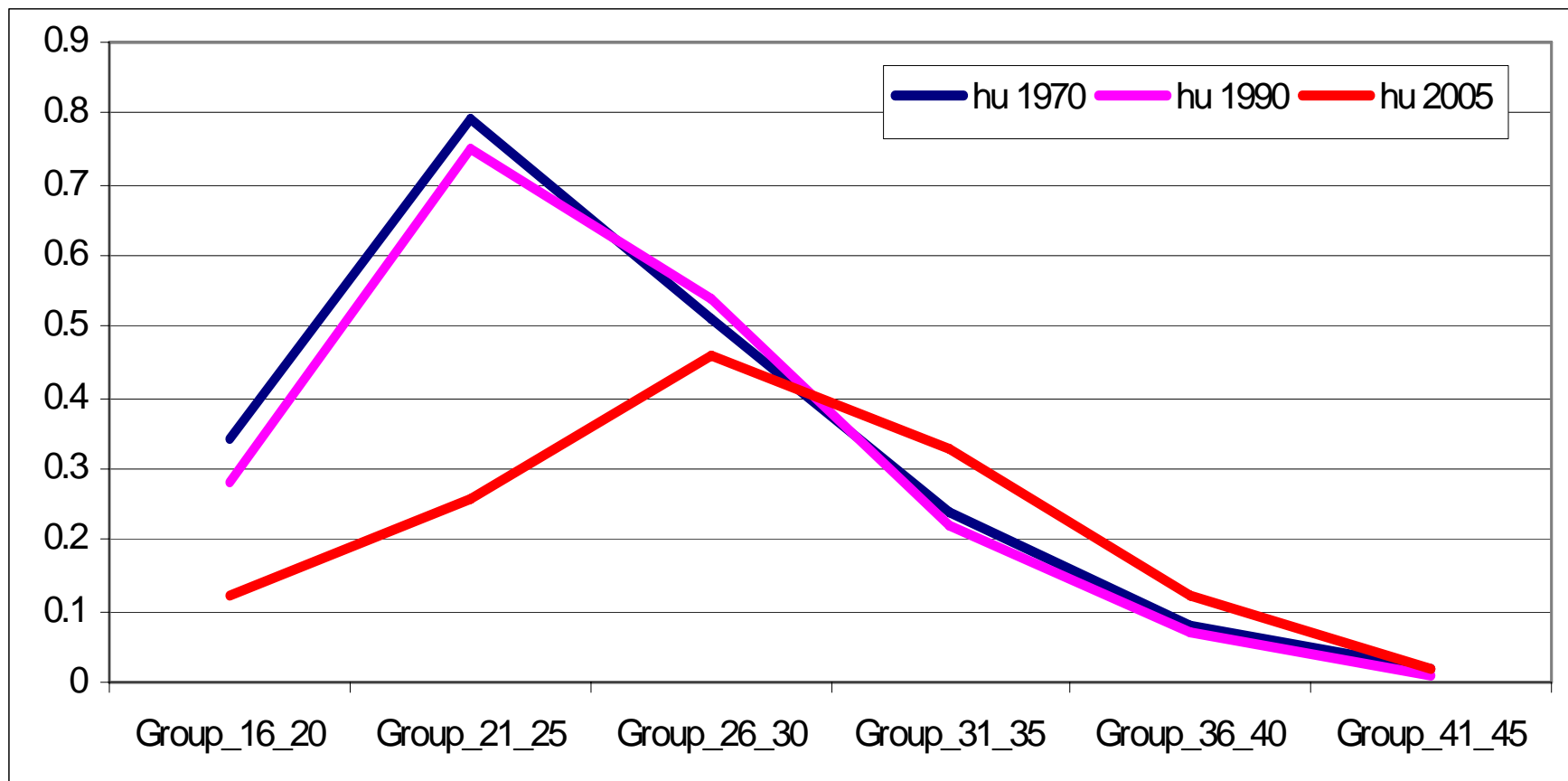
Source: IHS based on data from Eurostat (extraction: 10/2007)

Cohort fertility in IT (1970, 1990, 2005)



Source: IHS based on data from Eurostat (extraction: 10/2007)

Cohort fertility in HU (1970, 1990, 2005)



Source: IHS based on data from Eurostat (extraction: 10/2007)

Challenges for policies

Target group orientation:

Increase of age at first birth =
Older mothers

How can work and care be combined?

- Short breaks, early and flexible childcare
- Flexible employment options
- (compensations for income loss)

Young parents: attitudes, values, support

Single parents

Choice



Clustering EU27 & CC

MACRO Indicators:

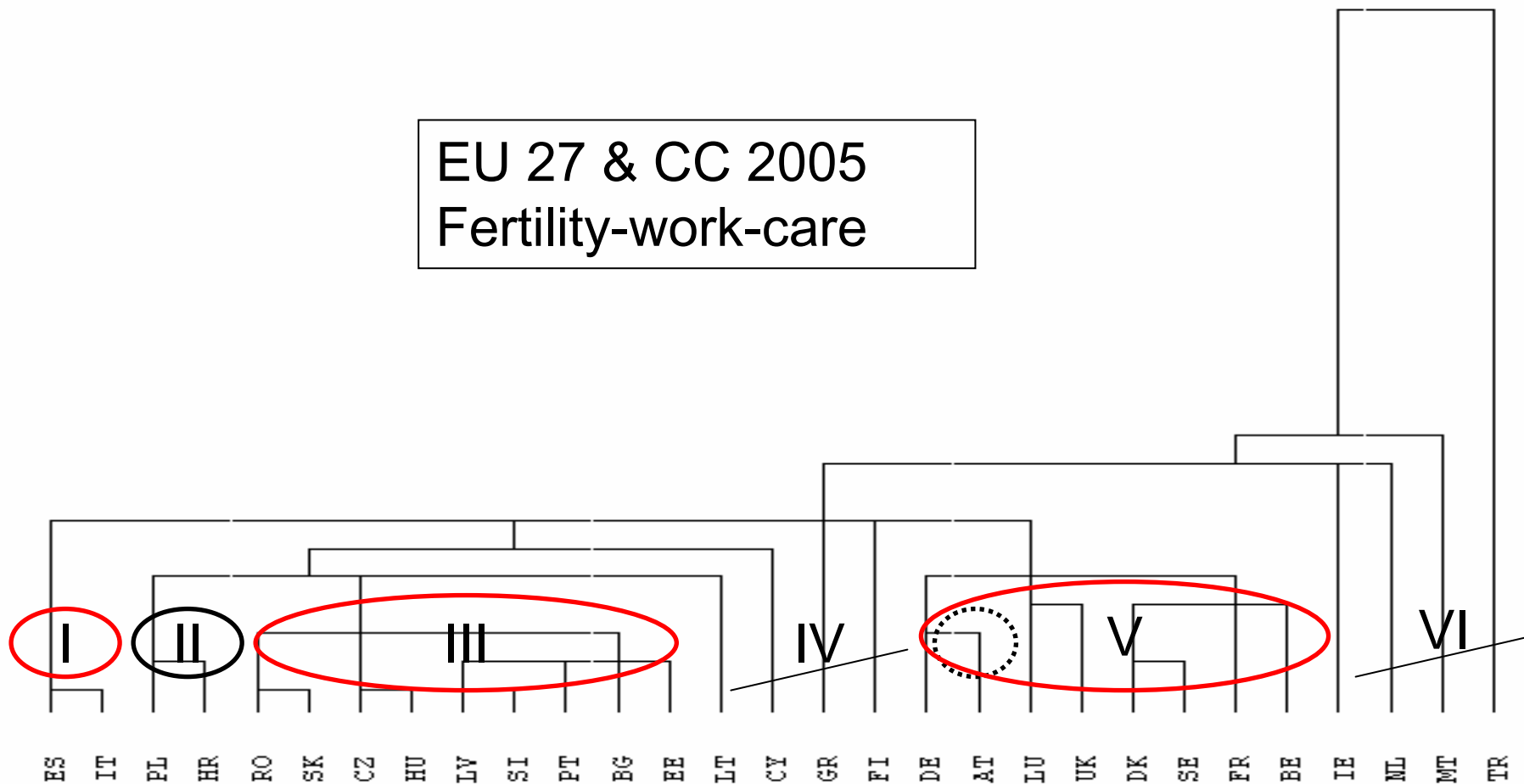
- Fertility (TFR)
- Population aged 0-14 yrs. (%)
- Female employment (25-54yrs.)
- Female part-time
- Gender gaps in employment & part-time employment

Method: Hierarchical cluster analysis

- Nearest neighbour; Euclidian distance
- Robustness: variation of variables, methods, countries



Mapping diversities in outcome of family policies



Source: IHS, based on Eurostat data (extraction: 01/2007)



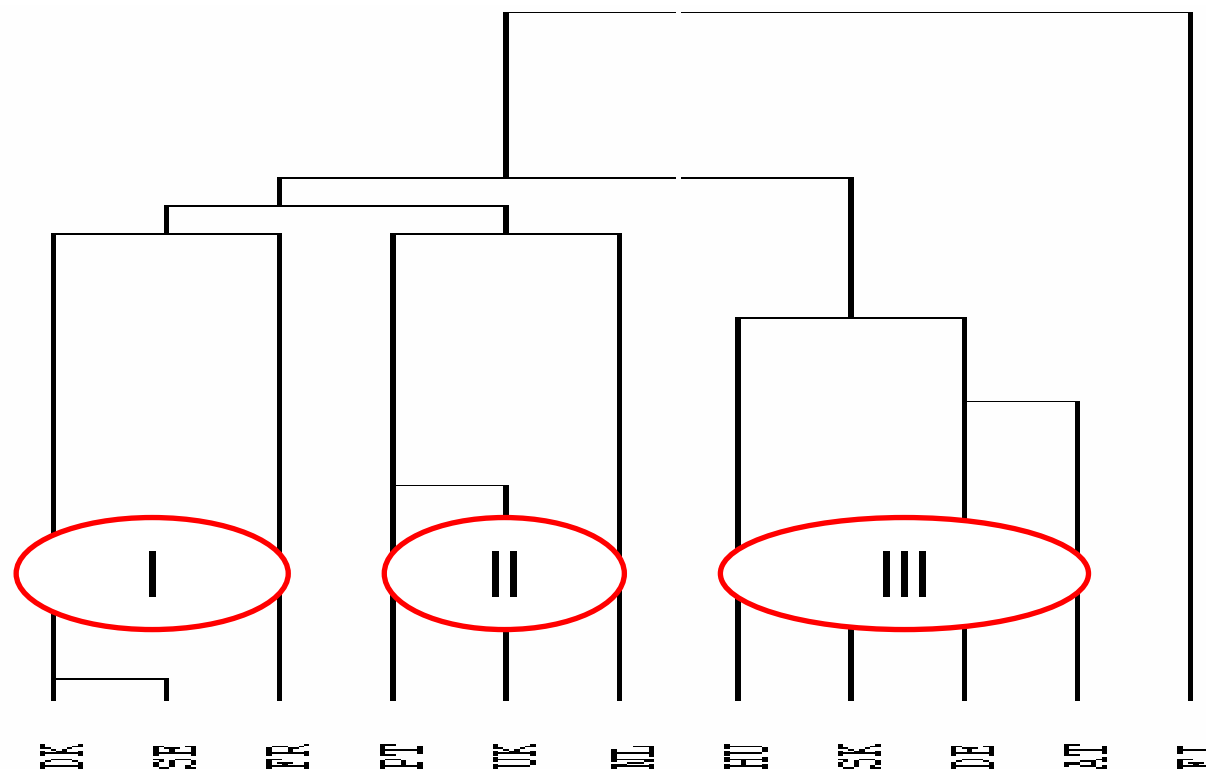
MACRO country grouping 2005

Spain & Italy:	Combine low female employment, medium female part-time employment with high childcare participation but with low fertility and share of young people.
Poland & Croatia	Similar to CEE countries, but lower childcare participation rates and female employment and medium share of young people.
CEE & Portugal	Combine high full-time female employment with medium to high childcare participation rates and low fertility and share of young people.
'Countries in between'	Lithuania & Cyprus: similar to CEE; Greece: similar to Spain & Italy; Finland: similarities to North European countries
North/Central Europe	Combine high female total and part-time employment with mainly high childcare participation rates and rather high fertility and share of young people.
Austria & Germany	Differ from other Central European countries by lower childcare participation rates, fertility and share of young people.
'Outliers'	Netherlands (very high female part-time employment), Turkey (very traditional gender roles), Ireland & Malta (different by several indicators)

Source: IHS

Modified POLICY cluster

Selected countries, 2005



Source: IHS based on EUROSTAT data and own classification of family friendly policies; input variables: childcare <3y.; 3-5 yrs.; cost for parents; female employment and part-time employment; TFR; maternity/parental leave (duration, benefits)



Policy solution = diversity!

$X = A0 + \text{development} + \text{economy} + \text{attitude} + \text{policy}$

mixes of family policies/services (role models?)

- SE, DK: state provides early childcare; full-time employment of mothers, continuous career → high TFR & female employment
- AT, CZ, HU, SK: long parental leave with financial support, early childcare at home, employment breaks
- NL: short leave, flexible part-time → combine work and care

new social trends/risks, welfare states reforms, integration (EU Social Model) → flexible options for childcare & employment !