

# Having an only child, having more children: desired vs. realized fertility for Italian mothers

Francesca Rinesi<sup>◇</sup>, Cinzia Castagnaro<sup>•</sup>,  
Claudia Iaccarino<sup>•</sup> Antonella  
Pinnelli<sup>◇</sup> and Sabrina Prati<sup>•</sup>

- Italian National Institute of Statistics (Istat)
- ◇ University of Rome "La Sapienza", Italy

# Contents of presentation

- ◆ A description of Italian fertility
- ◆ Research questions
- ◆ Data
- ◆ Methods
- ◆ Preliminary results

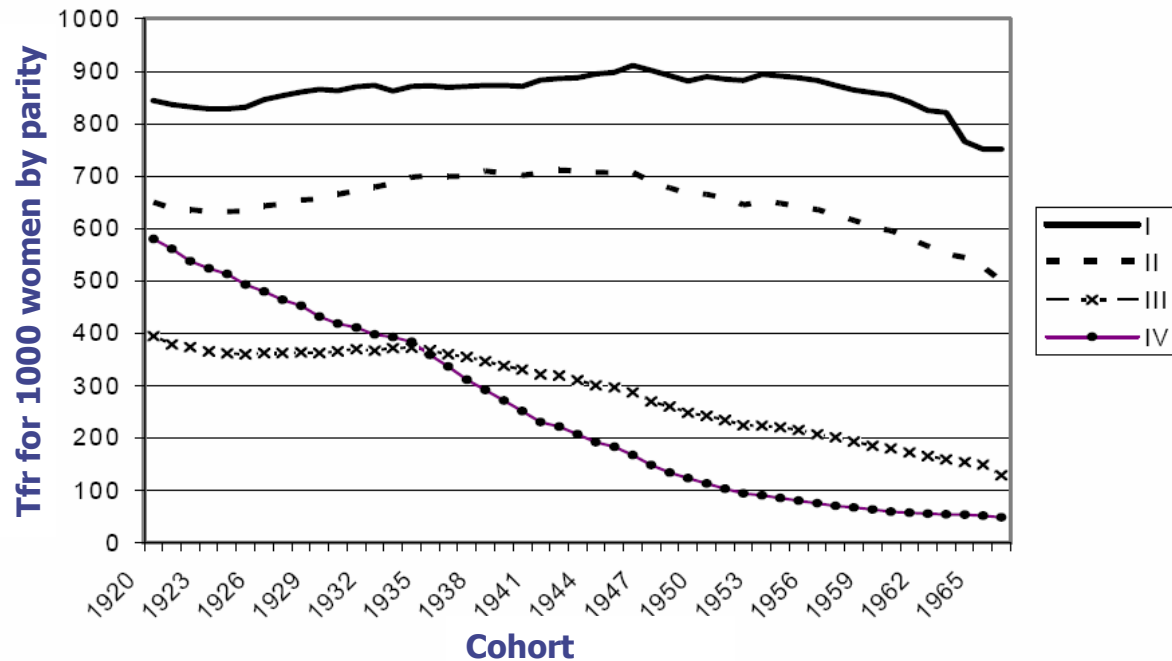
# A description of Italian fertility/1

In Italy:

- ◆ **Lowest-low Fertility;**
- ◆ **Low nuptiality;**
- ◆ **High mean age at first marriage.**

# A description of Italian fertility/2

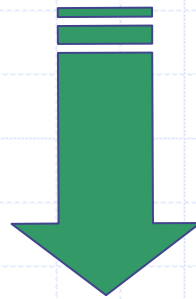
The **fertility reduction** concerns mostly the second and higher-order births:



# A description of Italian fertility/3

At the same time..

**Fertility intentions**  $\cong$  2 children.



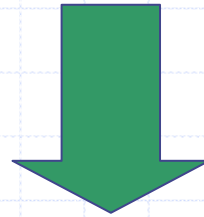
There are **persistent constraints** which inhibited the desired **fertility realization**.

# Research questions/1

- ◆ Which is the **share** of mothers who **want** further **children**?
- ◆ Which are the reasons for **not wanting** further children?
- ◆ To which extent **realized fertility** depends on fertility **intentions**?
- ◆ Which is the impact of **socio-demographic** and **economic factors** on fertility intention formation and their realization?

# Data

Data integration



Istat

- **Birth sample survey (2002);**
- **Birth registration records (2001-2005).**

Istat = Italian National Institute of Statistics

# Birth Sample Survey/1

◆ Carried out in **2002**;

◆ **Sample**: 47.650 mothers of live births enrolled in the Population Register during the second half of year 2000 and the first half of 2001;

◆ The **sample size** is about 10% of the total population;

◆ **Questionnaires**

Short form;

Long form.

# Birth Sample Survey/2

How Fertility Intention is collected:  
(long form only)

**“Do you intend to have further children?”**

**Yes**

“How many?”

“When do you intend to have your last child at the latest?”

**No**

“Which is the main reason why you don’t want to have additional children?”

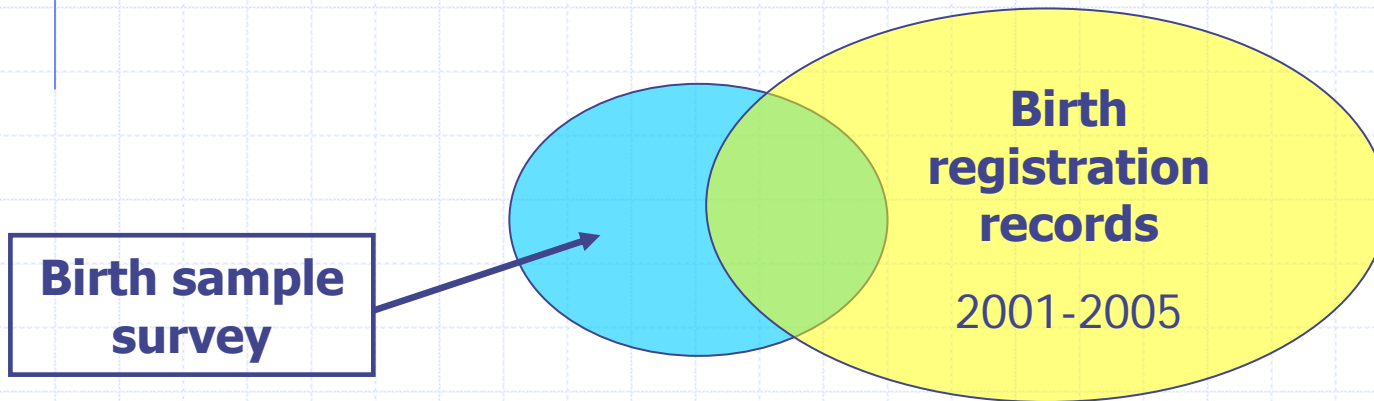
# Birth registration records (2001-2005)

The **individual sheets** retrieve information on:

- ◆ **Births** (name, surname, date and place of birth, nationality);
- ◆ **Parents** (name, surname, date and place of birth, marital status, nationality);
- ◆ **Head of the Household** (name, surname, complete address)

# Methods: Data Integration

**Record linkage** is a technique for finding records that refer to same entity but stored in two or more files.



**Exact linkage:** we use a unique identifier present in both files to link records.

# Methods

## ◆ Analysis of fertility patterns at micro level:

- Intervals between births of order  $n$  and  $n+1$ ;
- Realization of fertility intentions



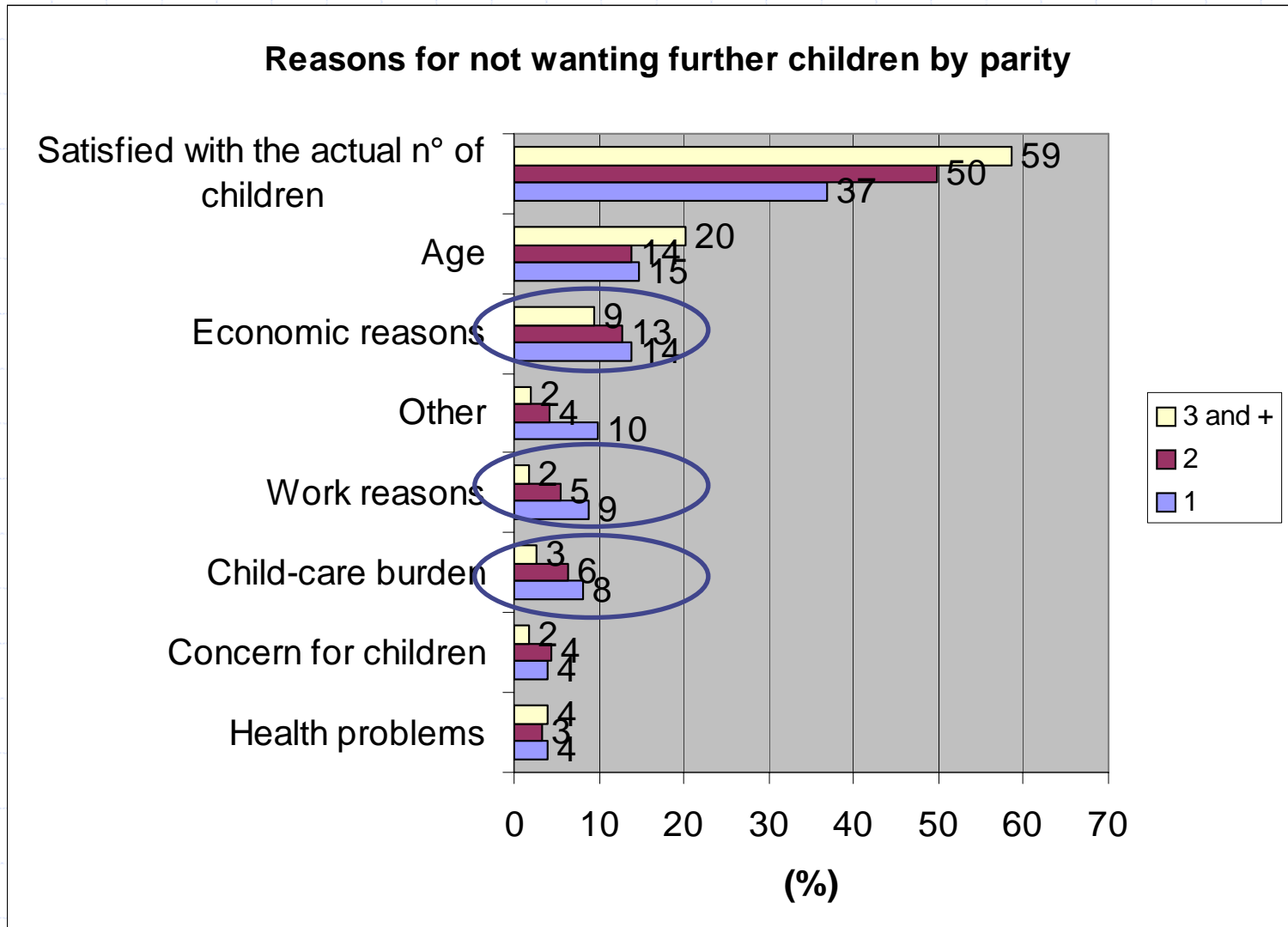
**Kaplan-Meier Survival Curves**

# Data description/1

Questionnaires	Number of mothers interviewed	Parity	Reproductive intentions (%)		
			Yes	No	Total
Short form	31,650	1	75.2	24.8	100.0
Long form	15,554	2	16.5	83.5	100.0
<i>Total</i>	<i>47,650</i>	3 e +	5.6	94.4	100.0
		<i>Total</i>	<i>41.7</i>	<i>58.3</i>	<i>100.0</i>

Number of further children (desired)	Parity			
	1	2	3 and +	Total
1	3,680	858	80	4,618
2	924	56	7	987
3	74	9	0	83
4	8	5	0	13
5	4	1	0	5
NA	135	31	20	186
<i>Total</i>	<i>4,825</i>	<i>960</i>	<i>107</i>	<i>5,892</i>

# Data description/2

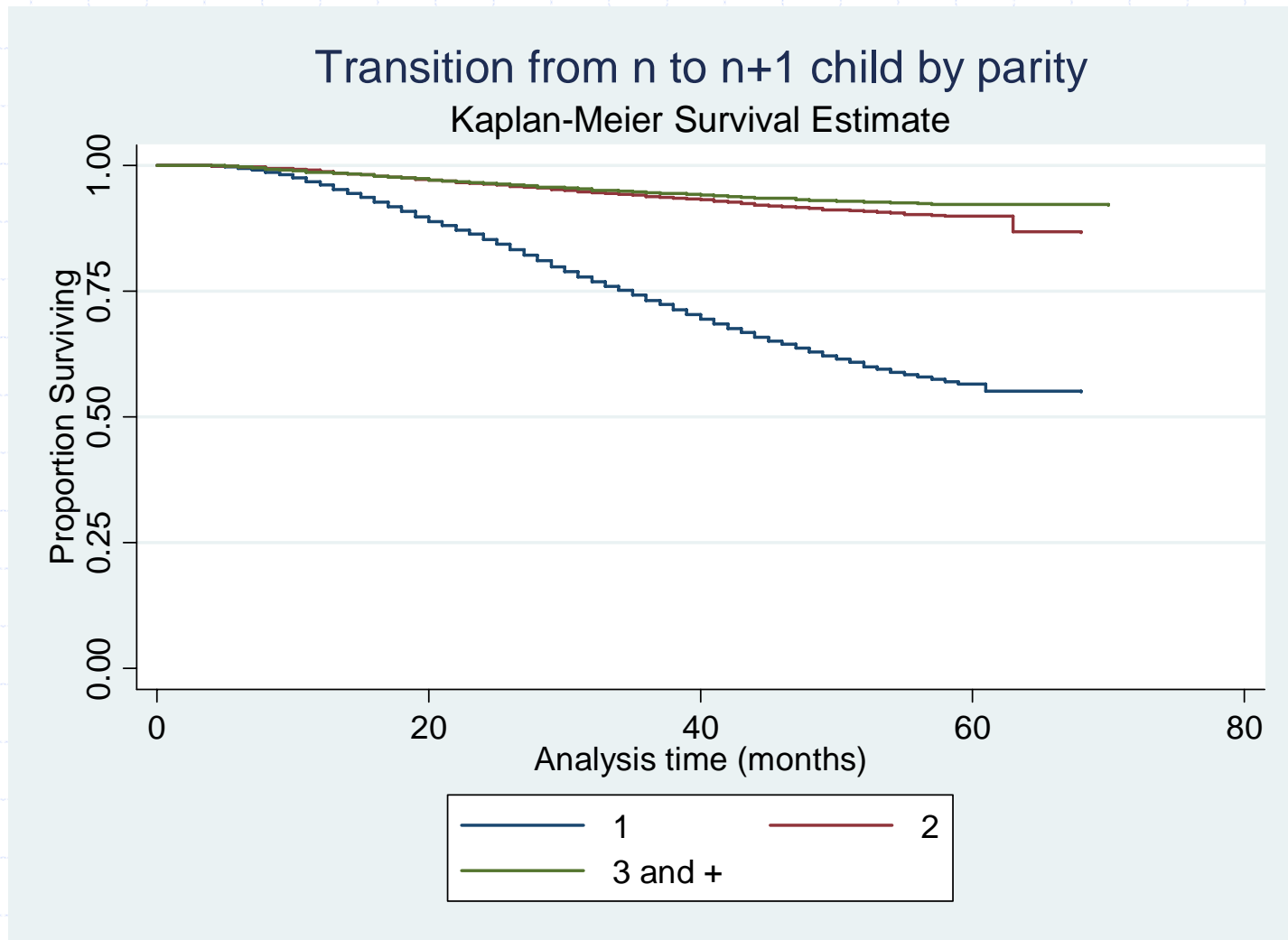


# Preliminary results/1

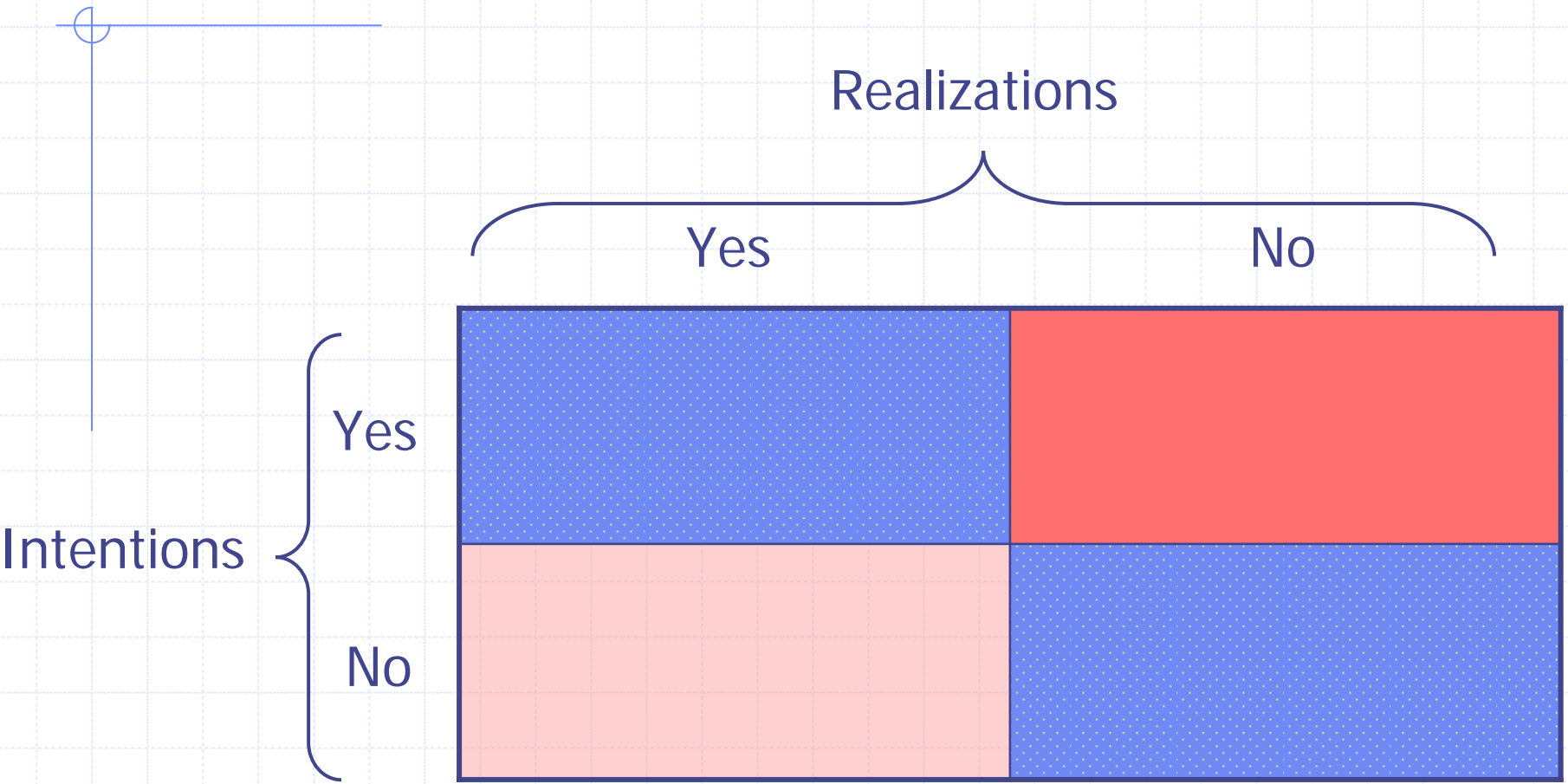
Year	Further births from interviewed women
2001	242
2002	2,170
2003	3,336
2004	3,441
2005	2,864
Totale	12,053

	Pregnant at interview time	Birth from pregnant women within 9 months (RL)	% linked
Phase 1	241	196	81.33
Phase 2	273	219	80.22
Phase 3	264	221	83.71
Total	778	636	81.75

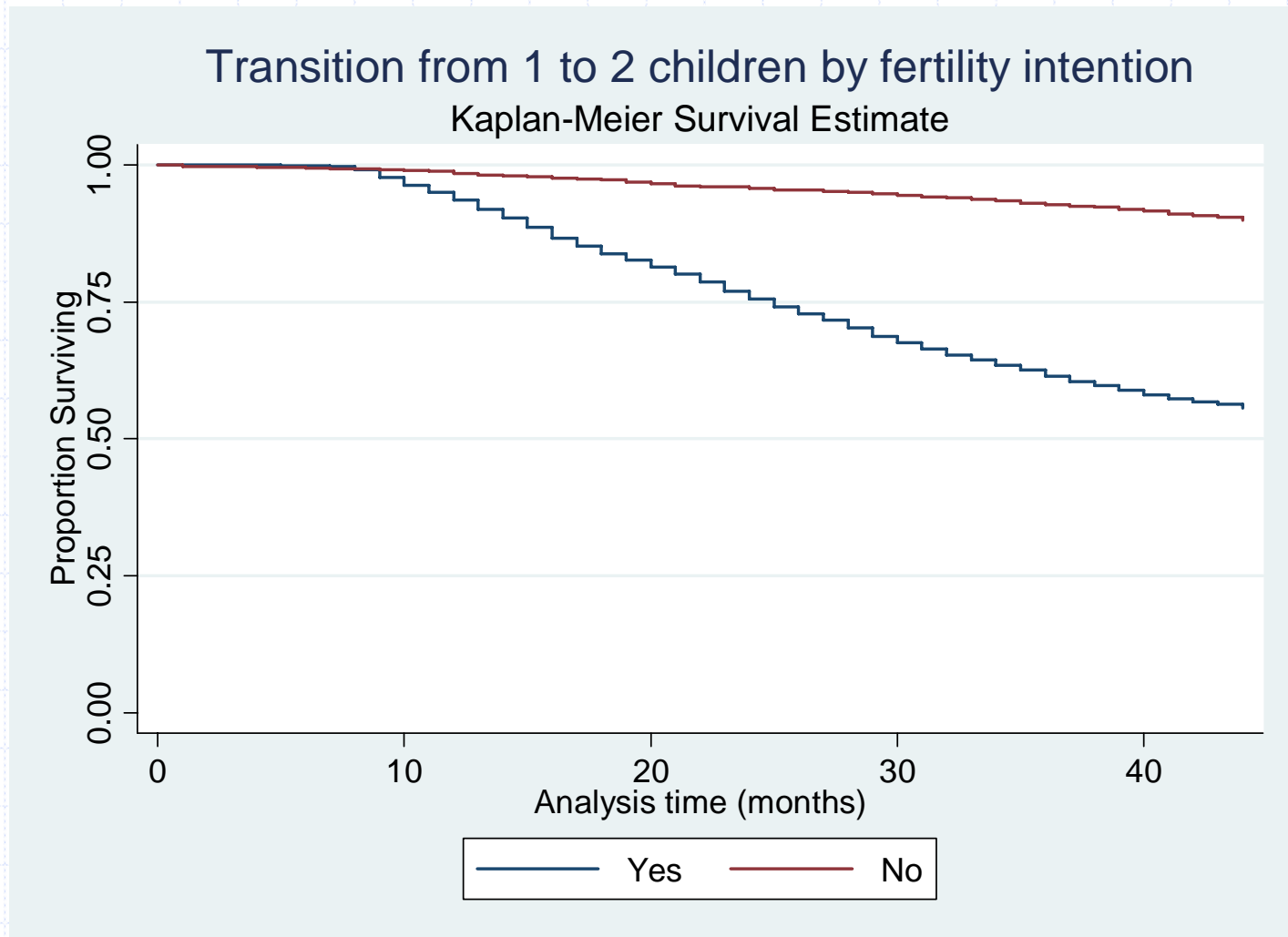
# Preliminary results/2



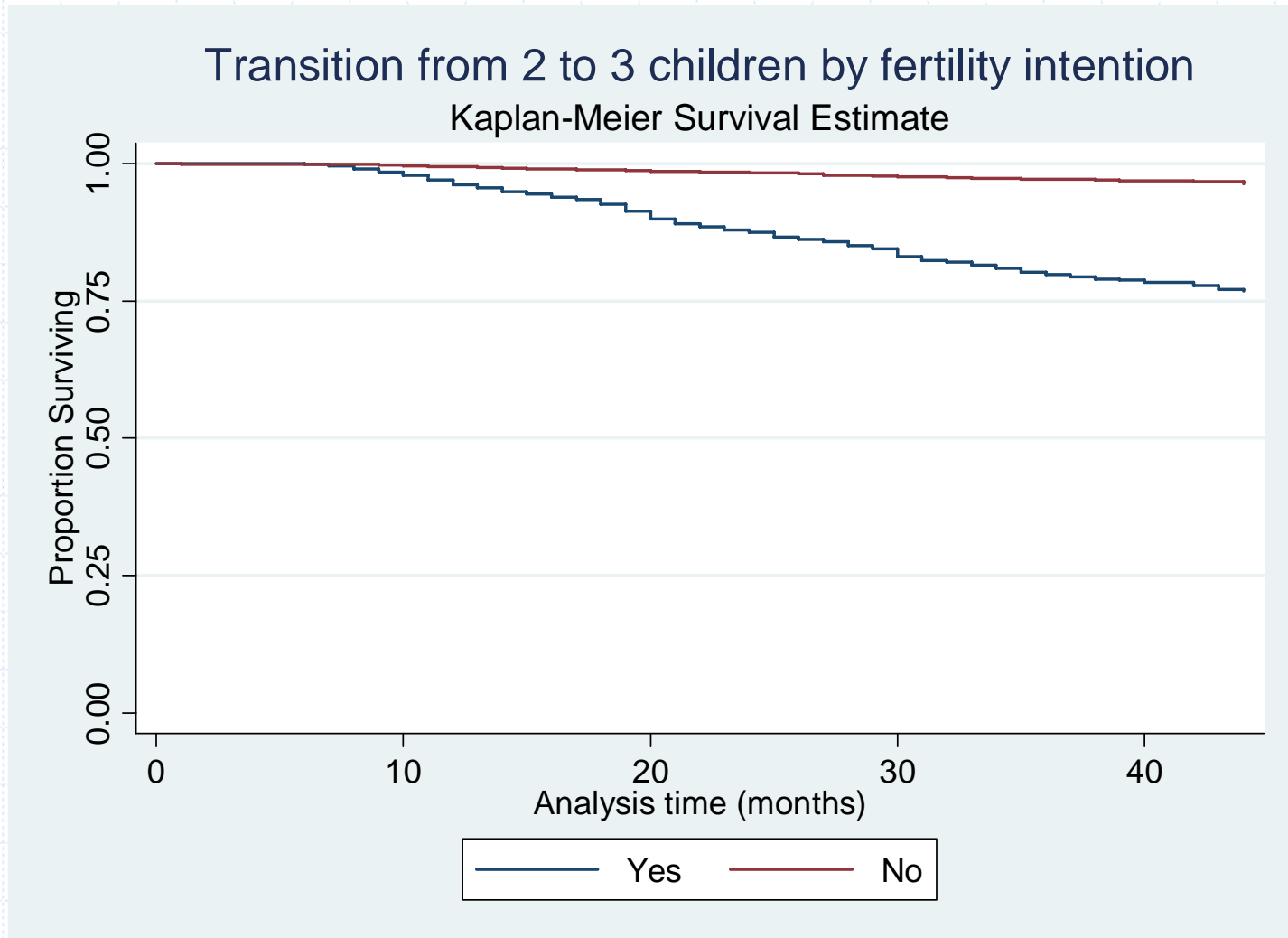
# Intention vs realization



# Preliminary results: fertility intentions/3



# Preliminary results: fertility intentions/4



# Further developments

- ◆ **Link** birth registration records of 2006/2007,
- ◆ **Probabilistic Record linkage,**
- ◆ Evaluate the impact of **socio-demographic** and **economic factors** on:
  - fertility intention formation;
  - fertility intention realization.

# Can Policies Enhance Fertility?

Yes!

- 1- If they have an impact on the economic **constraints** and on the **difficulties** in reconciling work and care that prevent women from desiring further children;
- 2- If they play a role in removing the obstacles to the **realization** of the **intended fertility**.



Thank you!

Comments or questions?

Parity	Abs.	(%)
1	23,282	49.32
2	17,975	38.08
3	4,762	1.9
4 and +	1,185	1.7
Total	47204	100.00

Parity	Reproductive intentions		
	Yes	No	Total
1	4,825	1,591	6,416
2	960	4,869	5,829
3 e +	107	1.787	1,894
<i>Total</i>	<i>5,892</i>	<i>8,247</i>	<i>14,139</i>