

# Number of siblings matters: Russian fertility policy of the 1980-ies have had only a limited effect on completed fertility of those from one-child families

Olga Grishina ([olga\\_grishina@mail.ru](mailto:olga_grishina@mail.ru))  
Population Department, Economic Faculty, Moscow State University

## Focus of the study

Correlation between the number of children in the respondents' parental family and the number of their own children. With a special focus on how people with a different family background in terms of siblings' number reacted to fertility policy of 1980-ies.

## Data

The study is based on nationally representative sociological and demographic survey "Parents and Children, Men and Women in Family and Society Survey (2004)" (RusGGG-2004) within the Pan-European "Generations and Gender Program/Survey".

6882 women answered to the question regarding their brothers and sisters and the number of their own children.

## Main findings

Demographic policy of 1980-ies have had a significant effect on completed fertility of only those women who have had at least one sibling.

Those from families with one child have not responded to the policy by significant increase of their completed fertility; rather, they have only responded by births' advancement.

\*\*\*

The continuing growth of the share of women with no siblings may become a limiting factor to the success of modern Russian demographic policy.

Figure 1. Parity progression ratios of the first child in real women generations to 40 years, PPR 0->1

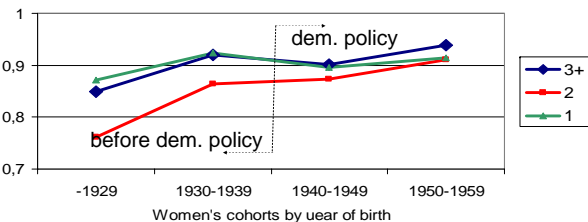


Figure 2. Parity progression ratios of the second child in real women generations to 40 years, PPR 1->2

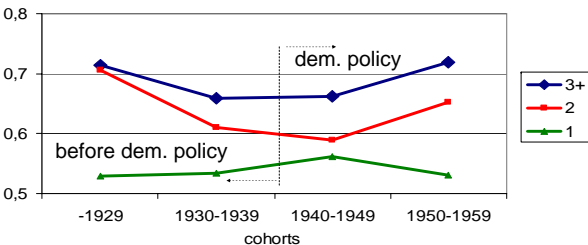
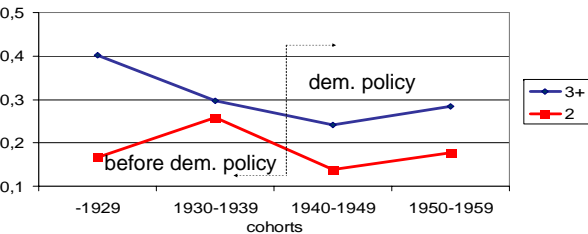


Figure 3. Parity progression ratios of the third child in real women generations to 40 years, PPR 2->3



The number of women who have come from one-child families and who have given birth to a third child in all cohorts is very small – less than 15 %.

Figure 4. Mean number of birth by one women to 35 years

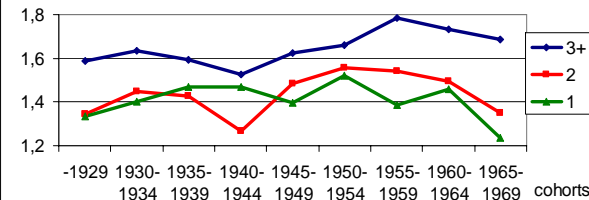


Figure 5. Intergenerational interval between birth of 1st & 2nd child in real women's generations (mother's age at the birth of the 2nd child is not more than 30)

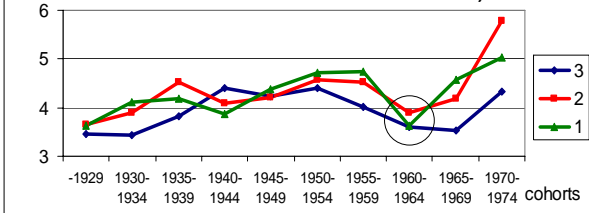
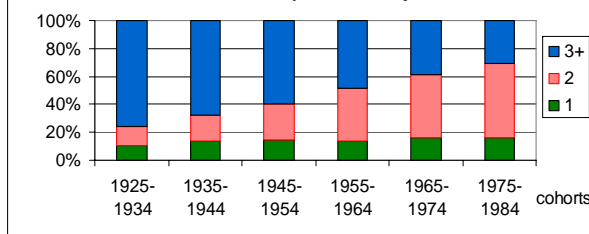


Figure 6. Percentage of women by the number of children in the parental family, %



Legend

3+ – women who have two or more siblings;

2 – women who have one sibling; 1 – women who have no siblings