

Realization, postponement and abandonment

Factors of realizing fertility intentions in four European countries

Zsolt Spéder
Balázs Kapitány

Demographic Research Institute, Budapest





Outline of the presentation

- The research questions
- Short look at the demographic profile of the countries
- A societal difference
- Socio-demographic factors in the explanation of succes and failure in intention-realization
- A result of the

2 Research questions

- (1) Is the chance to realize fertility intentions the same in the *European countries*? If not, what matters? (societal level)
- (2) Are the underlying mechanism of realization the same or different in the European countries? (individual/group specific level)
- (→) Prerequisite for comparative research:
 - Suitable and comparable measures of intentions and outcomes
 - Comparability among countries

The measures of our investigation

- *intended (expected) family size*
 - Quesnel- Vallée, Morgan, 2003; Monier 1989; Liefbroer, 2008
- *intention to have (any more) children at all*
 - Westoff and Ryder, 1977; Schoen et al. 1999; Berrington 2004
- **the intention of having a(nother) child *within 2 years* (*c: another child within 3 years*)**
 - Westoff and Ryder 1977, Toulemon and Testa 2005, Philipov, Testa 2008, Spéder, Kapitány 2009
- the *degree of certainty* of the childbearing intention and
 - Westoff and Ryder, 1977; Schoen et al. 1999, Philipov and Testa , 2007
- Coincidence of *the intentions of the partners*
 - Thomson 1977; Schoen et al. 1999

Construction of the fertility intention-outcome variable

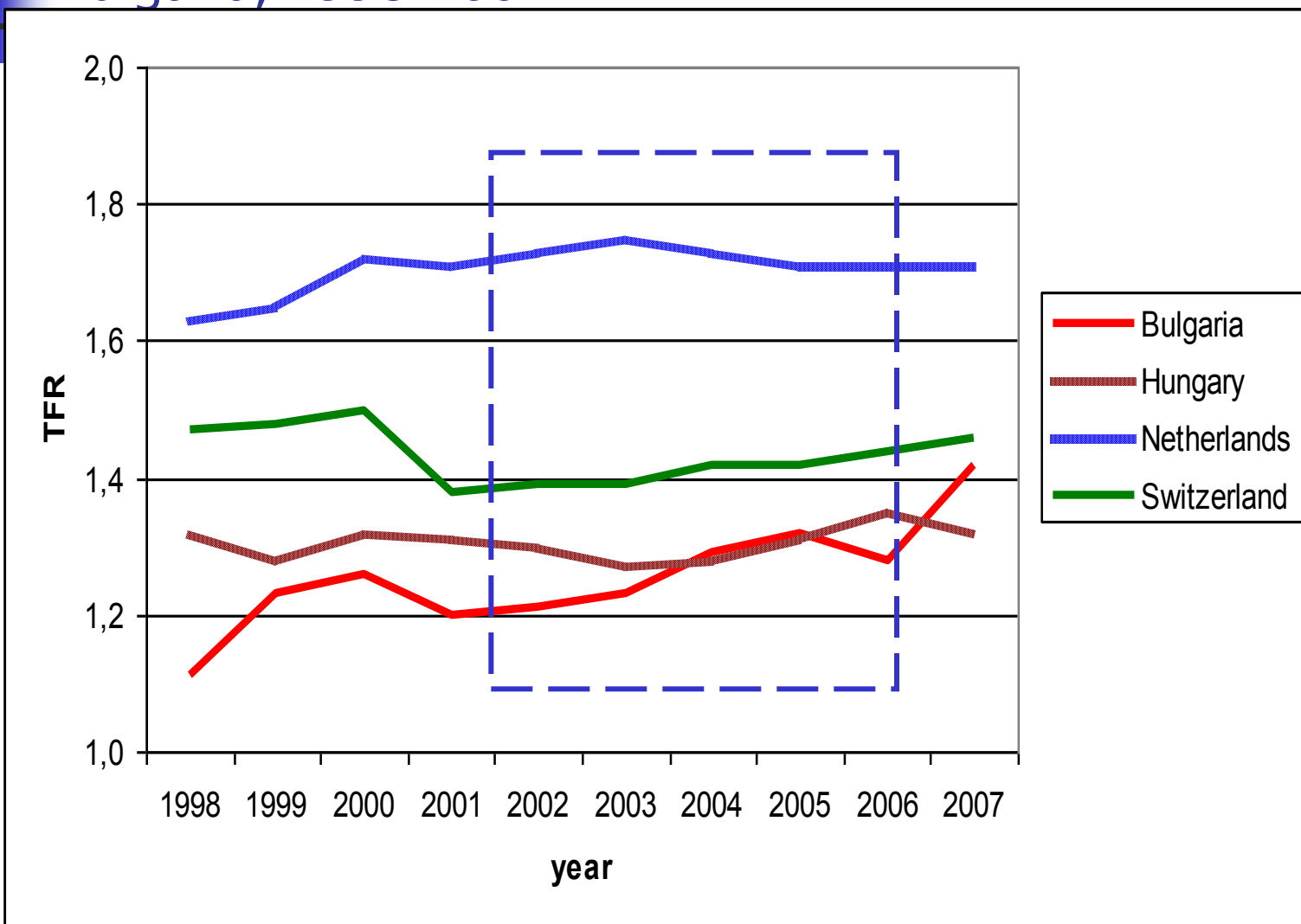
Fertility intention-outcome types	Intention	Outcomes	
	Fertility intention within two years (wave I.)	Had a birth within three years	If no child: Intend to have a child at wave II.
Intentional parents	Yes	Yes	
Postponers	Yes	No	Yes
Abandoner	Yes	No	No



Countries

- In order to measure accurately success and failure: longitudinal panel data is necessary!
- Country-selection is defined by the availability of the data
- Four countries until now:
 - **Hungary**: 'Turning Points of the Life-Course' (Hungarian GGS survey) 2001/2 - 2004/5
 - **Netherlands**: 'Netherlands Kinship Panel Survey' (Netherlands GGS survey) 2003/4 - 2006/7
 - **Switzerland**: Schweizer Haushalt-Panel (SHPSI.-SHPSII.) 2004 (6th wave) -2007 (9th wave)
 - **Bulgaria**: Social Capital Survey (2002-2005)

Total fertility rate in the Netherlands, Switzerland, Hungary and Bulgaria, 1998-2007



Distribution of different fertility intention-outcome types

	Netherlands (NL)	Switzerland (CH)	Hungary (HU)	Bulgaria (BU)
Intentional parents	75	55	40	38
Postponers	15	(27)	42	44
Abandoners	11	(18)	18	18

2nd research question for analysis

- Are there any social-demographic factors (group-specific features) that ease/hinder realization of intentions?
- If yes, are these the same (universal) or are these different (country-specific)?

Method & Description of the variables

Method:

Multinomial
Logistic
Regression

Dependent
variable

- Intentional parents
- Postponers
- Abandoners

Independent variables

- Age (cont.)
- Parity (**Parity0**, Parity1, Parity2+)
- Partnership (**Marriage**, Cohabitation, No partner)

Control variables:

- Labor market (**No job**, Job)
- Level of education (years of study; cont.)
- Religiosity (**Roman Catholic**, Protestant, other religion, No religion)
- Gender

Result 1: AGE

multinominal logistic regression models
 (ref: intended parents)

	Postponers				Abandoners			
	BU	HU	NL	CH	BU	HU	NL	CH
Age	1.044***	1,11***	,987	1,09***	1,17***	1,31***	1,30***	1,07**

- Intentional parents vs. postponers:
 - H1a: „biological clock“ : declining fecundity with aging ⇒ IP younger
 - H1b: Social age dead line: intense realization of aged ⇒ IP older
- Result: older ages increasing postponement (H1a ✓)
- Intentional parents vs. abandoners:
 - H2: according both approach: older ages increasing abandonment
- Result: H2 confirmed

Result 2: PARITY

multinomial logistic regression models
(ref: intended parents)

	Postponers				Abandoners			
	BU	HU	NL	CH	BU	HU	NL	CH
P1	1.394**	,663**	,349***	,138***	5.09***	3,59***	1,640	,221***
P2+	0.486**	,383***	,500	,252***	13.496***	5,25***	2,96**	,521

- Intentional parents vs. postponers
 - Hp3: Zero parity postpone
- Result: √ all countries, but
 - BU: the „(l)only child” family
- Intentional parents vs. abandoners
 - H4: Higher parity abandon
- Result: HU, NL, BU: Higher parities ABANDON, but
CH: zero parity abandoner: CHILDLESSNESS

Result 3: PARTNERSHIP

multinomial logistic regression models (ref: intended parents)

	Postponers				Abandoners			
	BU	HU	NL	CH	BU	HU	NL	CH
Co	1.147	1,249	1,553	,620	0.521***	,954	1,307	,400*
Lone	6.426**	4,01***	2,31	4,23***	2.598***	3,44***	2,63	5,94***

- Partnership as crucial prerequisite of realization
 - H5: living alone postpone
- Result: H5: confirmed
- Cohabitation: lower commitment than marriage ⇒
 - H6: cohabitants postpone more than married
- Result: No significant effect (in HU among female, not shown)

Contr. var 1: EDUCATION

multinomial logistic regression model
(ref: intended parents)

	Postponers				Abandoners			
	BU	HU	NL	CH	BU	HU	NL	CH
EDU	1.038**	,945*	,948	,999	0.93***	,844***	,817***	,978
Job	0.942	1,149	,691	,811	1,062	1,109	1,479	1,661

- Level of education:
 - Assump. 1: higher succeed (resources, knowledge)
 - Assump. 2: higher failure ('opportunity cost')

!male+female!
- Result: Assump. 1 Partly confirmed (HU, NL), but in BU Ass. 2 confirmed

Contr. var 2: RELIGIOUS DENOMINATION

multinomial logistic regression models (ref: intended parents)

	Postponers				Abandoners			
	BU	HU	NL	CH	BU	HU	NL	CH
Pro	--	1,176	3,377*	1,390	---	,880	,910	,829
Oth.	0.923	,848	5,602**	4,013***	0.953	,416**	,612	,774
NO	1.028	1,433**	2,714*	1,345	0.417***	,992	,942	1,756
<i>N.r²</i>	<i>0.32</i>	<i>0.37</i>	<i>0.26</i>	<i>0.27</i>				

- Religious denomination /values/



Summary

- ***Societal context*** can support or hinder the realization the intentions (macro level)
- Some ***social/demographic status*** support realization
 - AGE (young)
 - Partnership (stable)
 - Parity (party1)
- Strong ***overlaps*** of demographic factors affecting realization of fertility intentions in the countries, but also some country differences
 - (eg. CH and parity)



Thank you for your attention!