

International Population Conference
Effects of migration on Population Structures in Europe
Vienna/Austria, 1-2 December 2008
Session 6. Effects of migration on population composition

Effects of migration on population ageing.
The case of the Valencian Community.

Carles Simo Noguera*, Salvador Mendez *, Gaiane Safarova**

*University of Valencia, Faculty of Social Sciences. Departament of Socioloy and social Antropology
Campus dels Tarongers, Edifici Departamental Oriental, Av. dels Tarongers s/n, 46022 Valencia, Spain
Tel. 34 96 162 53 35, Fax. 34 96 382 84 50, e-mail: Carles.Simo@uv.es

** Saint-Petersburg Institute for Economics and Mathematics, Russian Academy of Sciences.

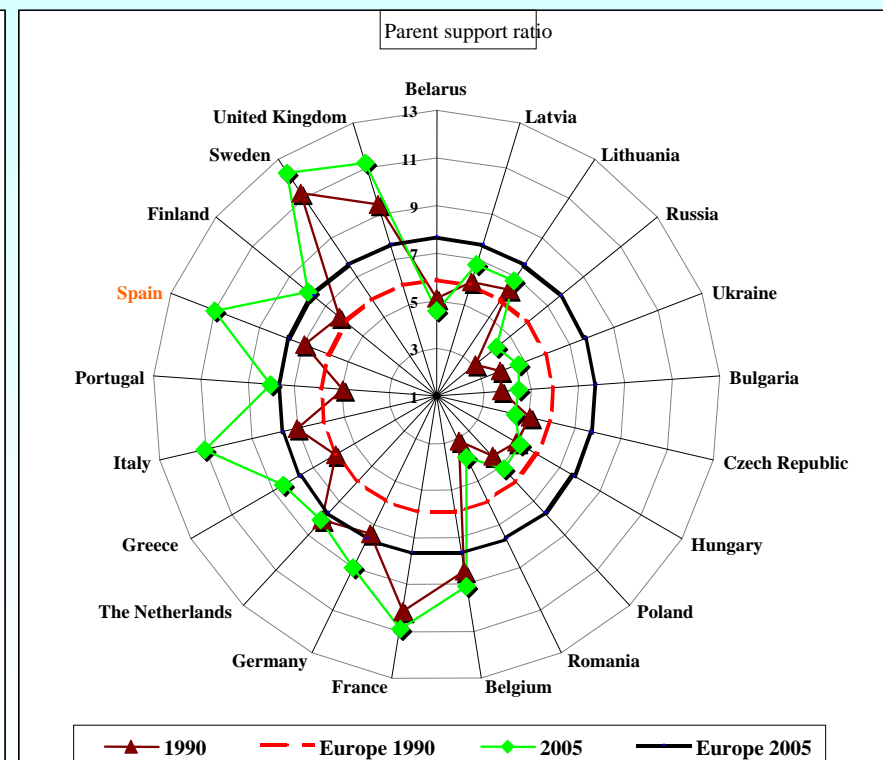
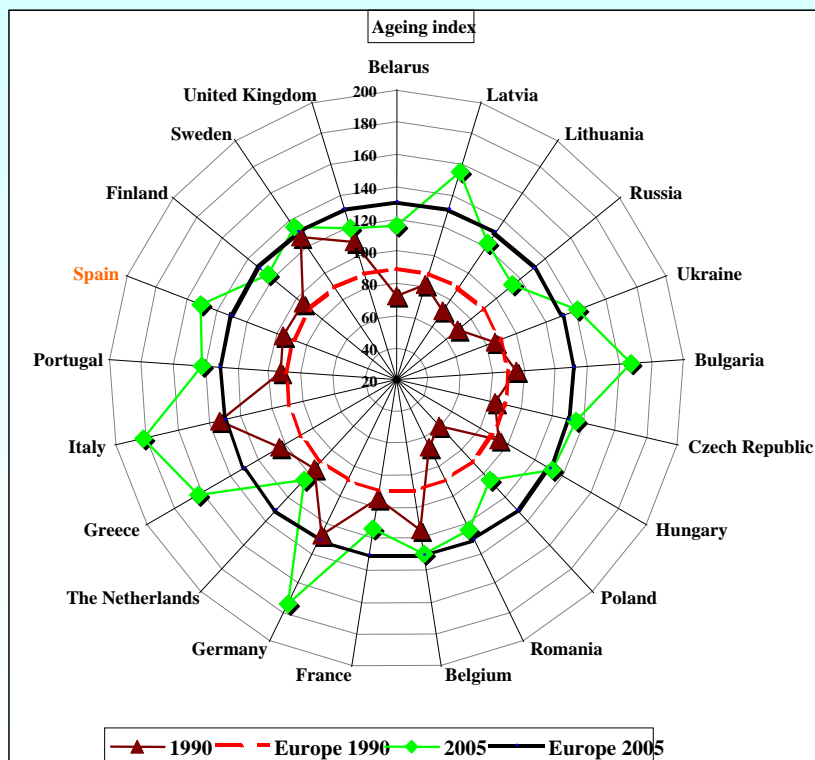
*R+D+I funding programs, General Directorate of Scientific Policy.
Government of Valencian Community, ref. GV/07/170.*

The paper aims at studying the interplay between ageing and international migration in the Valencian Community

- Why should we focus on the Spanish region called Valencian Community?
- What do we do?
- Sources
- Results
- Concluding remarks

- Why should we focus on the Spanish region called Valencian Community?
- It is an important case study:
 - Highest rate of internal movement in Spain
 - One of the highest rate of external immigration
 - The share of foreign population is extremely high
 - Valencian community receives two very different migration inflows (dissimilar migratory projects and dynamics of integration) that impact oppositely on the age structure.
 - Very good data conditions: local censuses, microdata on annual residential movements, and a System of Information on Population (including residents and non-registered persons who live there for an important part of the year; analysis of such information is not included here).

Important case study. Spanish ageing process in the European context



Important case study
Valencian Community and its parts

% of population 65 and more,
Local censuses, 2005 (first january)



Important case study.

Main figures of migration in Valencian Community

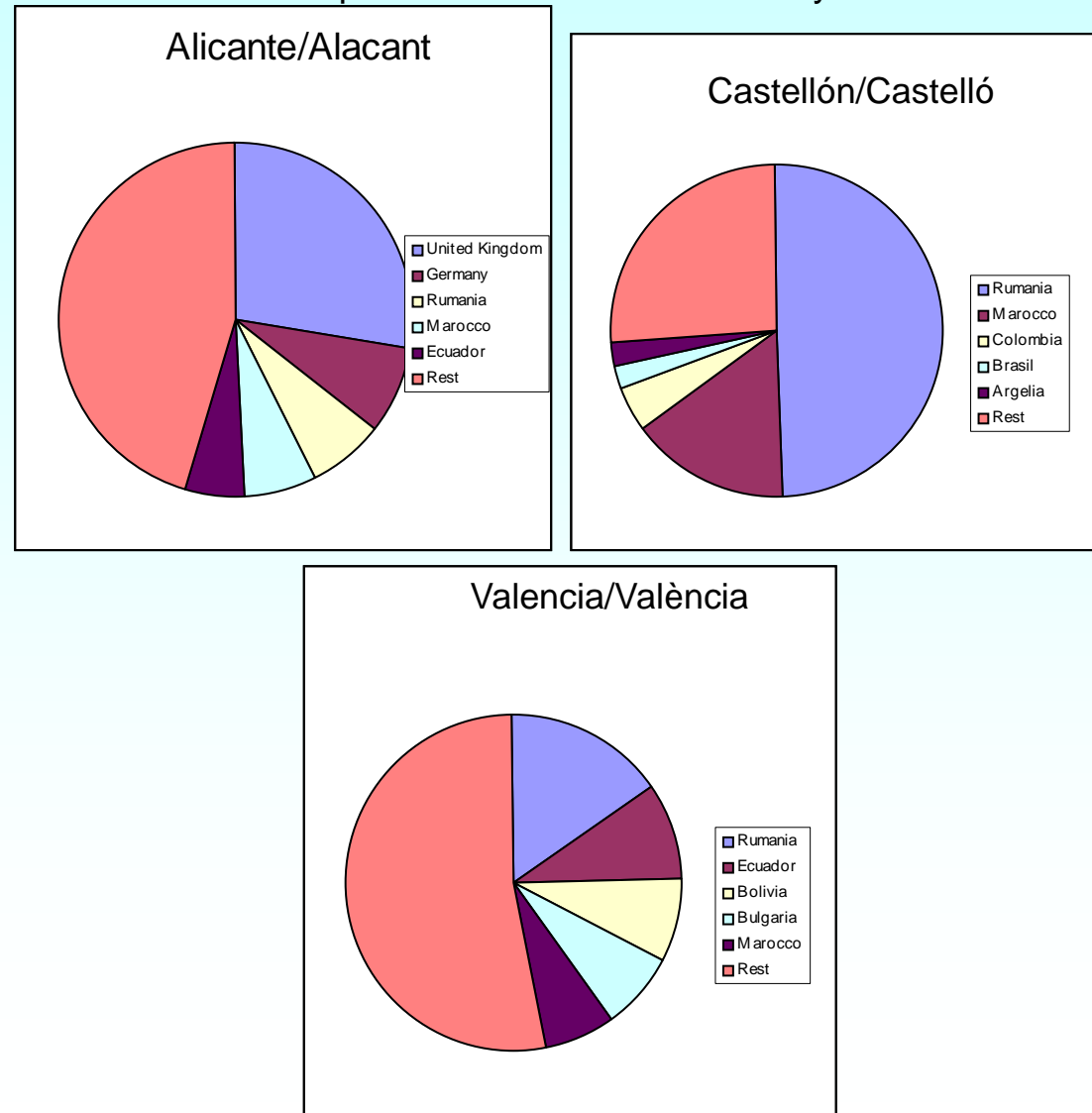
			2003	2004	2005	2006	2007	2008
Population by citizenship	Total		4.470.885	4543304	4692449	4.806.908	4.885.029	5.016.348
	Foreign population		413.760	464317	581985	668.075	732.102	838.224
	% of foreign population		9,25	10,22	12,40	13,90	14,99	16,71
Movements within Spain into and from Valencian Community	Immigration flows (1)	Spanish	35230	35869	32982	34596	37826	
		Foreigners	19150	23041	26386	27694	34086	
		Total	54380	58910	59368	62290	71912	
	Emigration flows (2)	Spanish	26434	26267	26995	29647	31544	
		Foreigners	12444	16043	17011	19251	25845	
		Total	38878	42310	44006	48898	57389	
Internal movements	Balance of internal migration (Valencian Community) (1) - (2)		15.502	16.600	15.362	13.392	14.523	
Movements to or from another country For which the origin or the destination is the Valencian Community	Immigration Flows (3)	Spanish	3897	3967	3289	3358	3337	
		Foreigners	76214	98739	98822	116456	124472	
		Total	80111	102706	102111	119814	127809	
	Emigration flows (4)	Spanish	1088	761	1451	1824	2375	
		Foreigners	1585	5704	4935	14513	19578	
		Total	2673	6465	6386	16337	21953	
External movements	Balance of external migration (Valencian Community) (3) - (4)		77.438	96.241	95.725	103.477	105.856	
Components of natural growth	Births		47.322	48.954	50.628	52.756	54.552	
	Deaths		40.121	38.379	40.240	38.569	40.698	
	Natural balance		7.201	10.575	10.388	14.187	13.854	

Important case study. Main figures of migration in Valencian Community

Share of Foreign population in 2008

SPAIN	11,33%
BALEARS (ILLES)	20,75%
VALENCIAN COMMUNITY	16,71%
Alicante/Alacant	23,38%
Castellón/Castelló	17,81%
Valencia/València	11,51%
MADRID (COMUNIDAD DE)	15,86%
MURCIA (REGION DE)	15,74%
CATALUÑA	14,93%
RIOJA (LA)	13,73%
CANARIAS	13,62%
ARAGÓN	11,62%
NAVARRA (C. FORAL DE)	10,42%
CASTILLA-LA MANCHA	10,00%
ANDALUCIA	7,53%
CASTILLA Y LEÓN	6,01%
CANTABRIA	5,69%
PAIS VASCO	5,41%
ASTURIAS (PRINCIPADO DE)	3,72%
GALICIA	3,42%
EXTREMADURA	3,20%

Foreign population by nationality,
Different parts of Valencian Community



What do we do?

– A very simple description of ageing process

- Migration inflows (% of aged 65 and more) (1997-2007).
- Age structure Spanish/foreigners (2007).
- Ageing indicators for the period 1991-2005 (proportions of the elderly, ageing index, dependency ratios, parent support ratio).

- Data sources

- Local censuses 1996, 2000, 2001, 2002 and 2005 (information highly detailed), and 2007.
- General Census 1991
- Microdata on residential movements 1997-2007.

RESULTS: Migration inflows (% of aged 65 and more) (1997-2007).

Table 1. International migration in the Valencian Community

Year	Migration flows, number of people			% of population 65+ in migration streams		net migr. among individuals aged 65 and older
	in migr.	out migr.	net migr.	in migr.	out migr.	
1997	6473			12,90%		
1998	10481			13,20%		
1999	20894			14,70%		
2000	53737			6,70%		
2001	78050			5,48%		
2002	84232	3761	80471	6,66%	14,07%	5085
2003	80111	2673	77438	6,34%	15,38%	4671
2004	102706	6465	96241	6,63%	11,66%	6057
2005	102111	6386	95725	5,68%	8,47%	5260
2006	119814	16337	103477	4,95%	5,78%	4983
2007	127809	21953	105856	4,35%	4,71%	4529

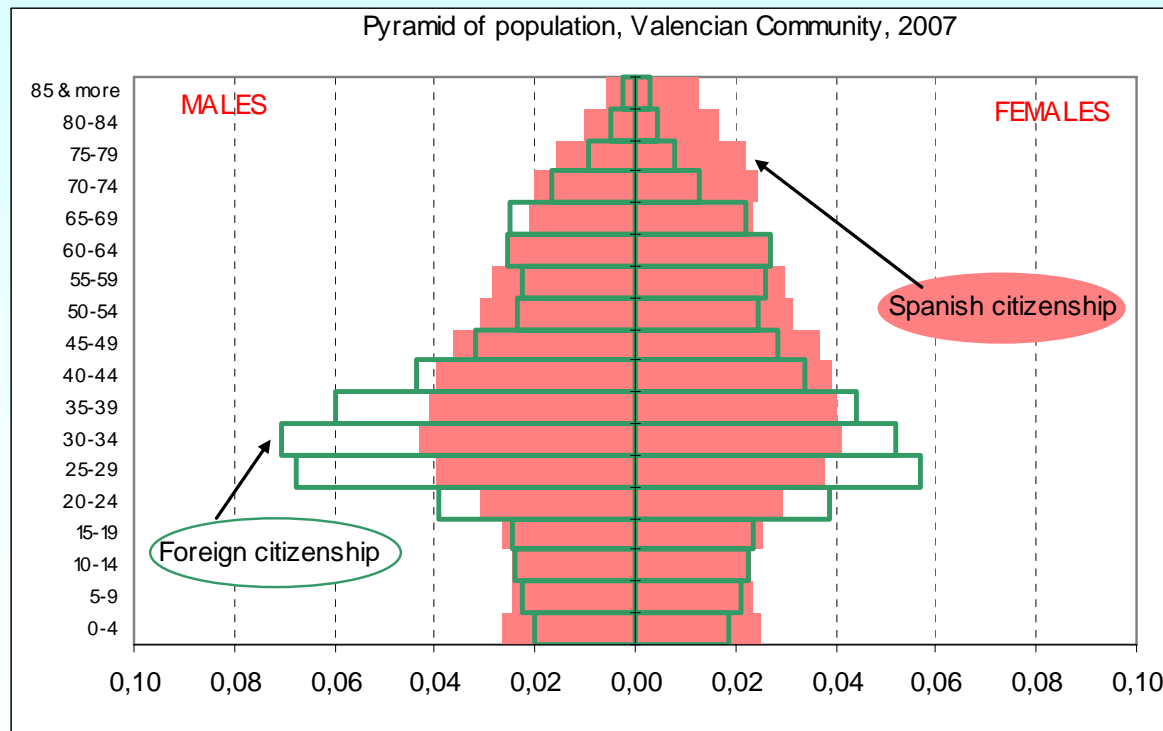
Source: Microdata from Statistics on residential movements. Spanish Statistics Institute.

While net migration in VC has increased, the number of the elderly in net migration has had a non linear process (in 2007 is 11% lower than 2002)

The proportion of elderly in net migration is not high but international migration has far-reaching on the region's age structure

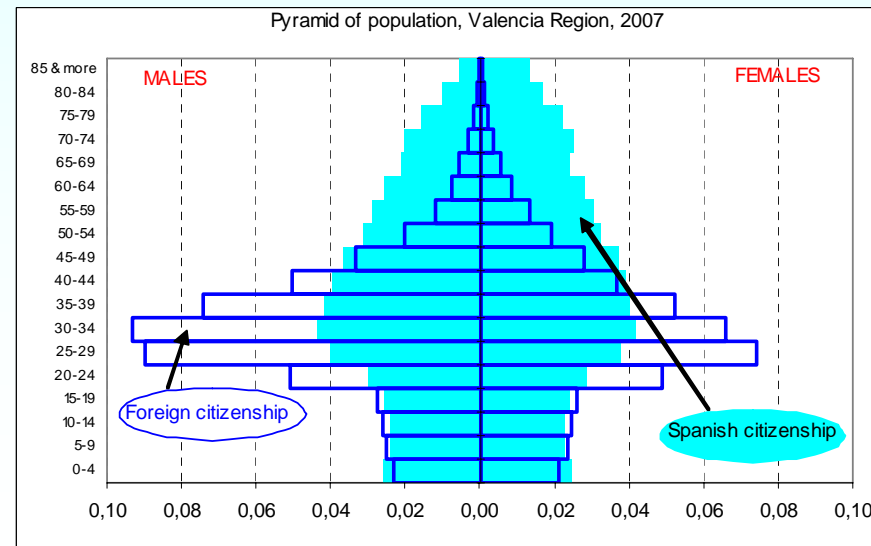
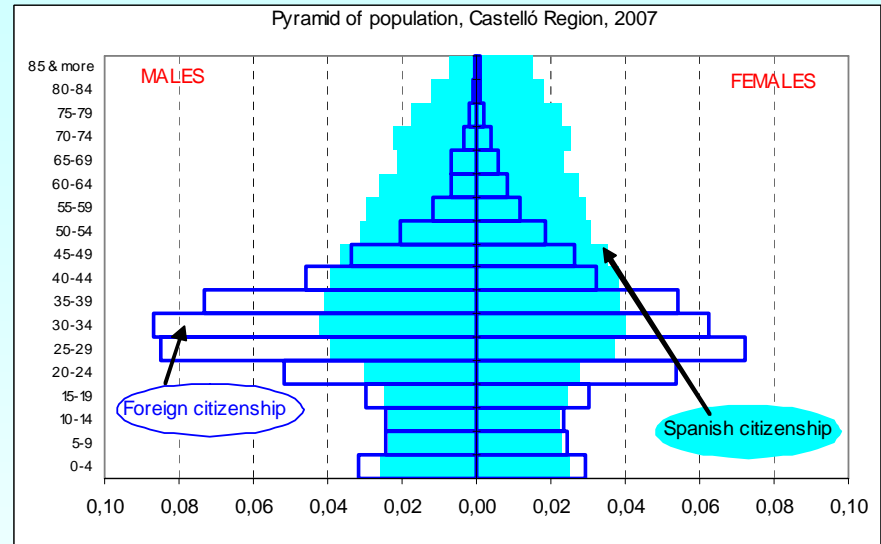
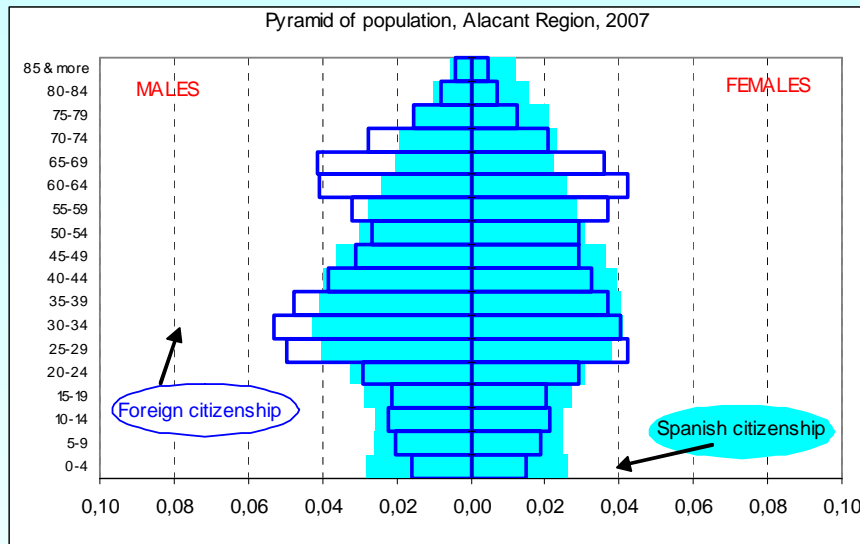
AGE STRUCTURE, 2007.

Figure 1.a Age-sex composition of the Valencian Community, 2007



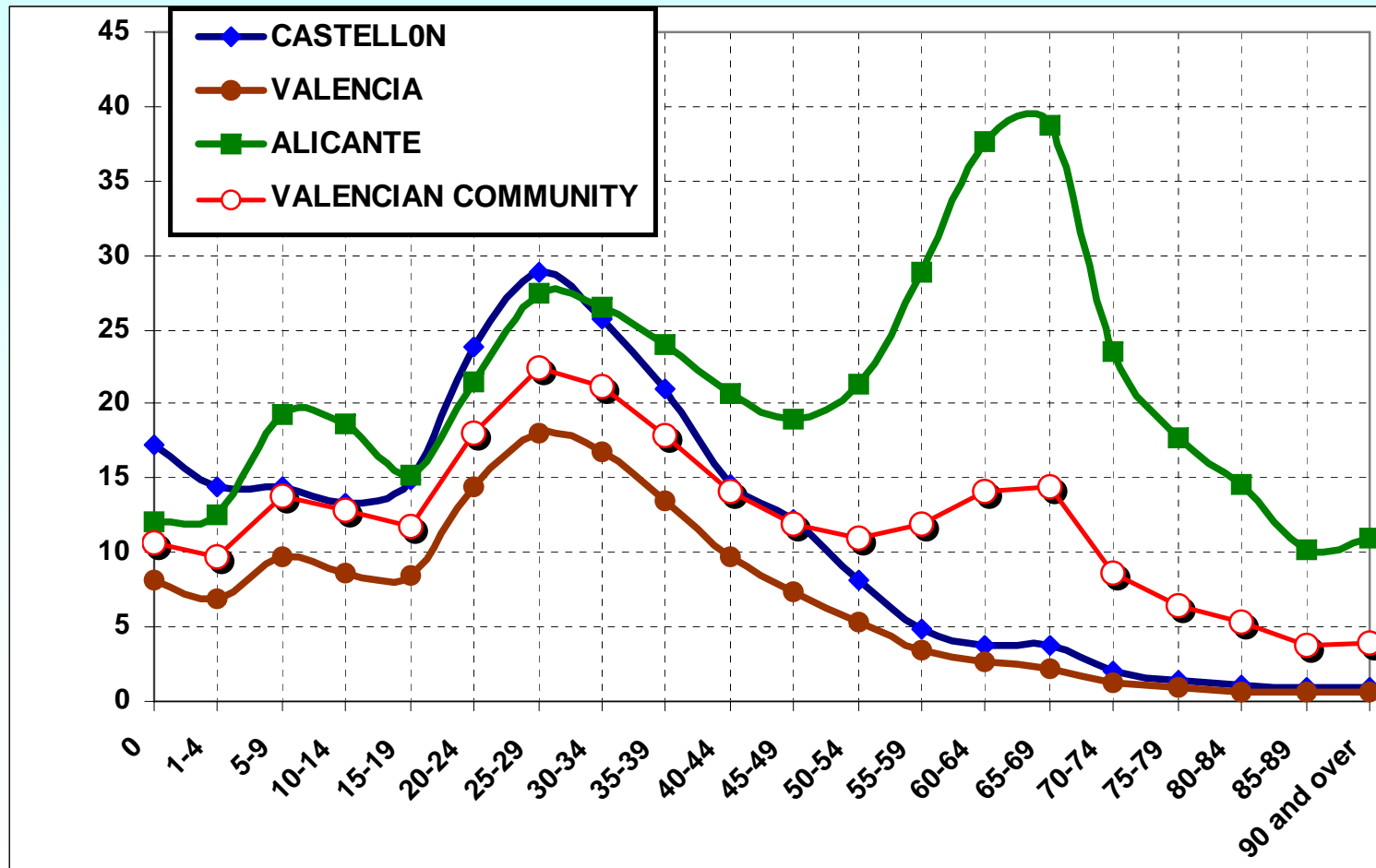
Source: Own elaboration using data from Local census. Spanish Statistics Institute.

AGE STRUCTURE, 2007.

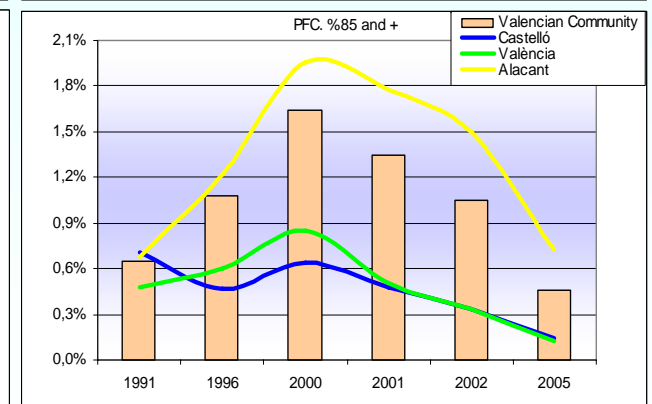
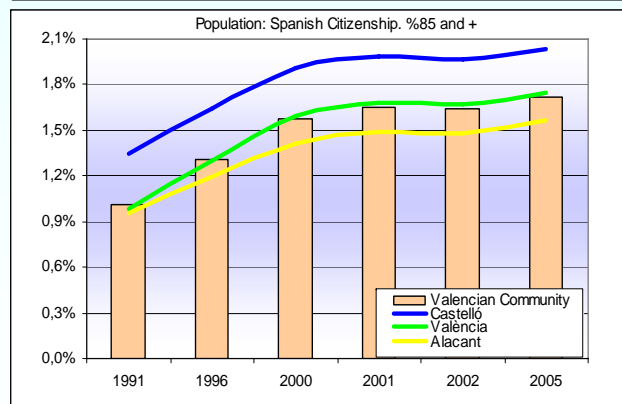
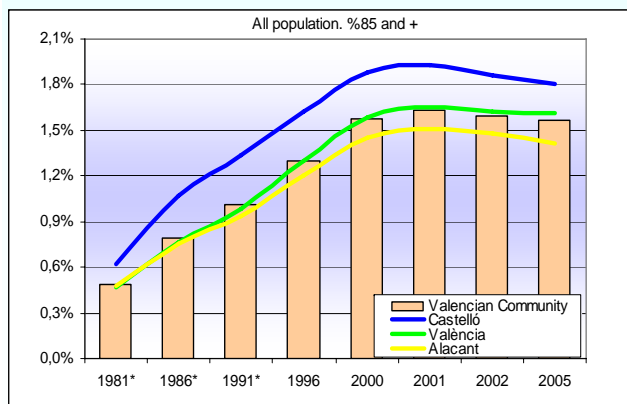
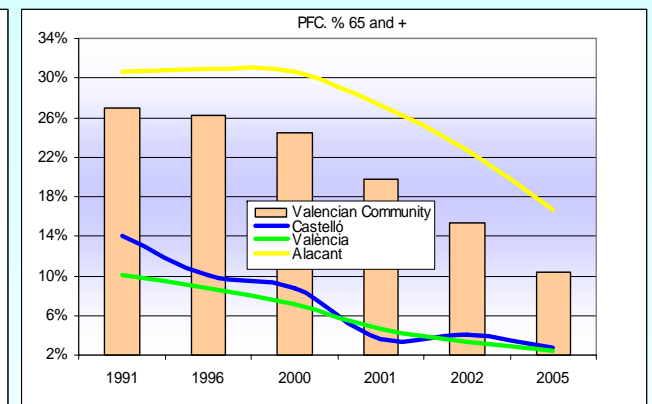
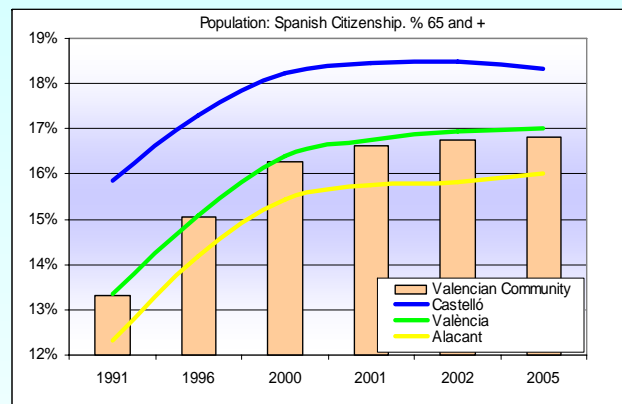
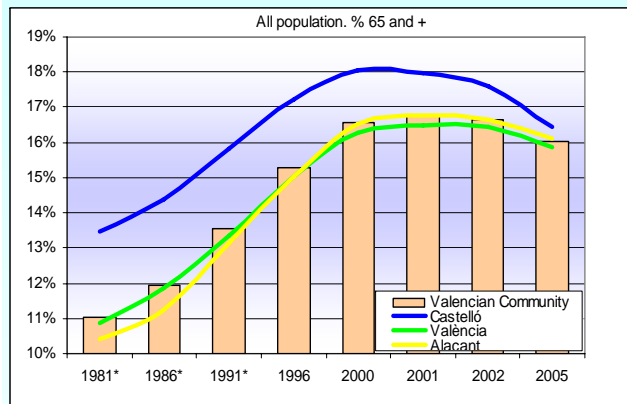


STRUCTURE: AGE SPECIFIC RATIOS)

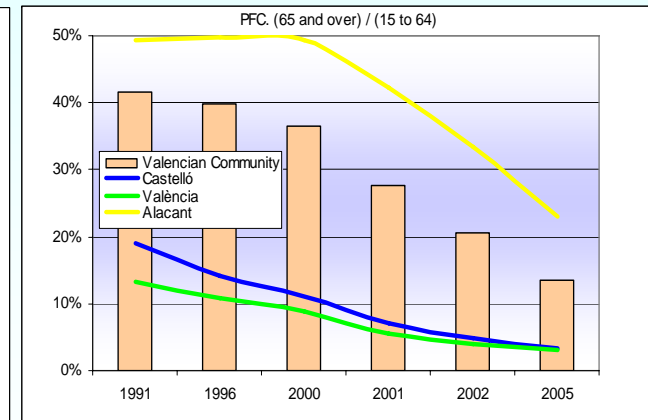
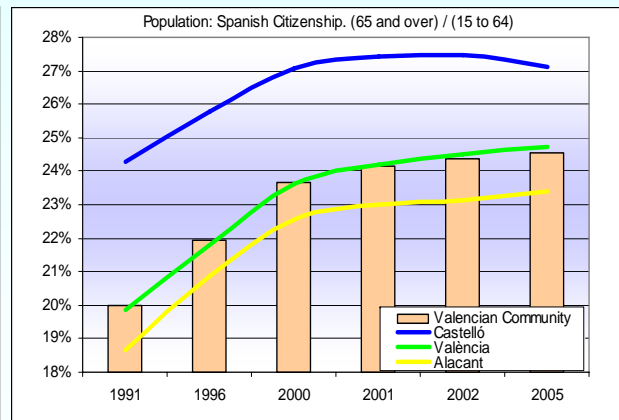
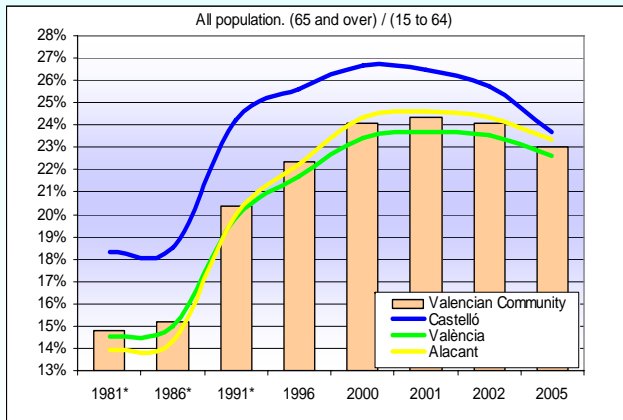
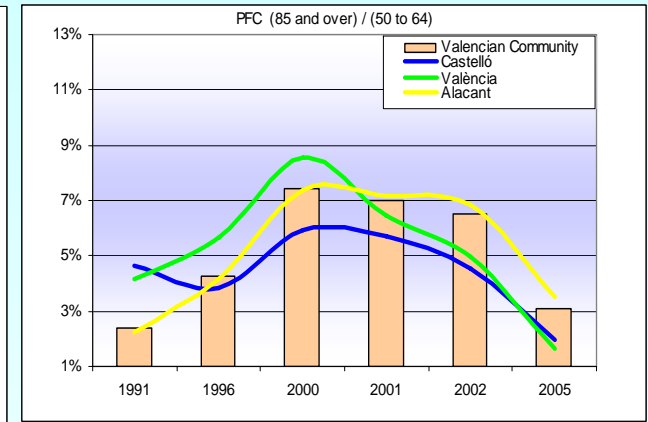
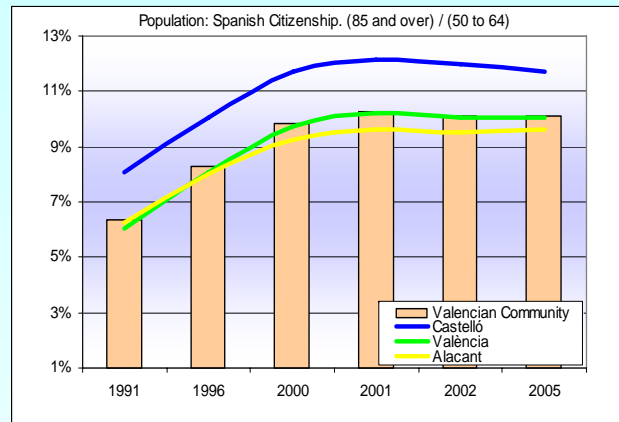
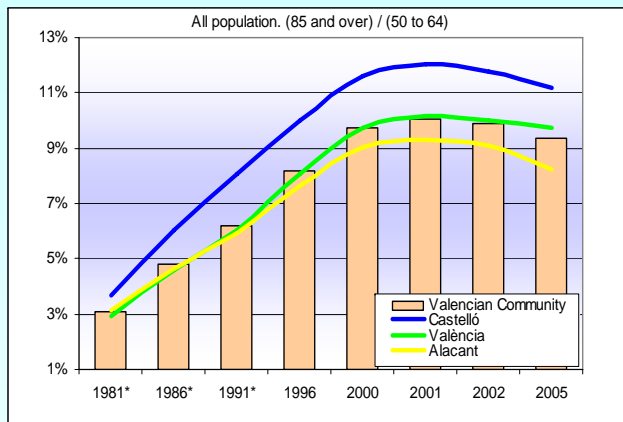
Fig. 2. Age groups ratios. Population of foreign citizenship per 100 Spanish citizens, Valencian Community and its parts, 2005



Ageing indicators for the period 1991-2005 (i).

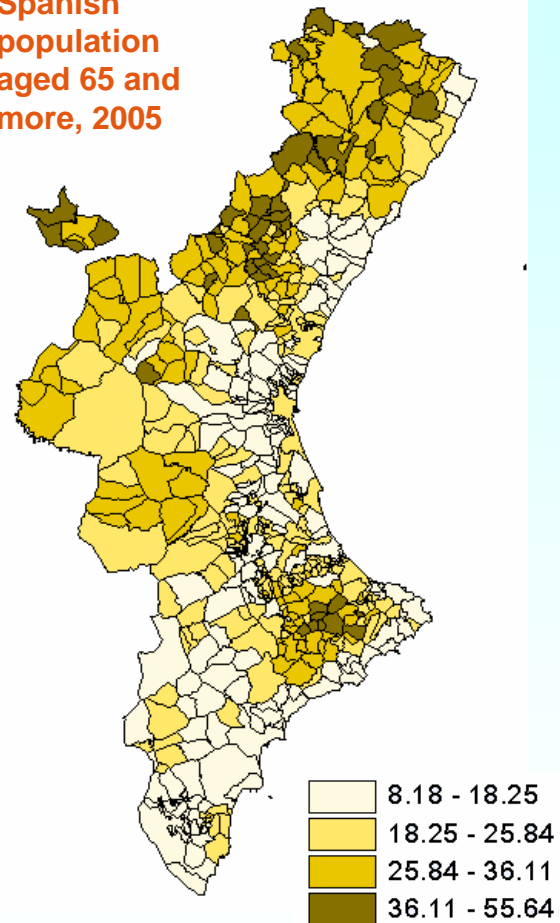


Ageing indicators for the period 1991-2005 (ii).

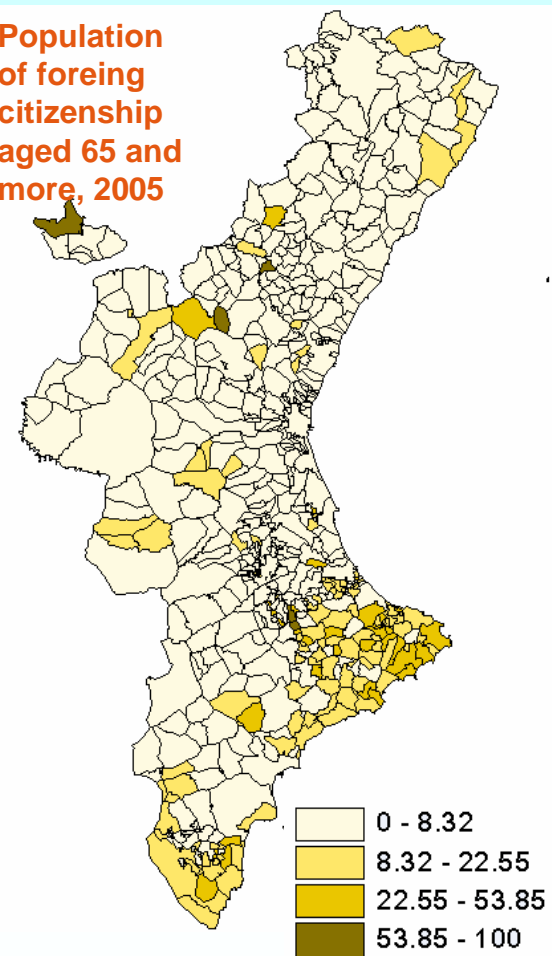


Ageing indicators for the period 1991-2005 (iii).

Spanish population aged 65 and more, 2005



Population of foreign citizenship aged 65 and more, 2005



Natural breaks, optimization of Jenk

Concluding remarks

- Great importance of international migration for age structure formation in the VC.
- Figures of immigration flows illustrate the importance of elderly population in Alicante region, although the number and share of such flows in comparison with young-adult age groups are decreasing.
- Old people of foreign citizenship constitute an important part of the elderly in the Valencian Community.
- Important regional differences in ageing indicators related to citizenship have been revealed (migration effects are different).
- Ageing process for Spanish citizens is increasing (the fact that ageing process has stopped for the whole population is due to PFC).
- Results of the study revealing interrelations between migration and age structure constitute an important information for the management, administration and planning of social and health services.

THANKS FOR YOUR ATTENTION