

**Conference on the
Postponement of Childbearing in Europe,
Vienna, Austria, December 1-3, 2005,
Organizers: Vienna Inst. of Demography,
Universita Bocconi, Milan and IIASA**

**Waiting long but not too long.
First childbearing at higher ages
in Sweden and Poland**

Livia Sz. Oláh

Dept. of Sociology

Stockholm University

Sweden

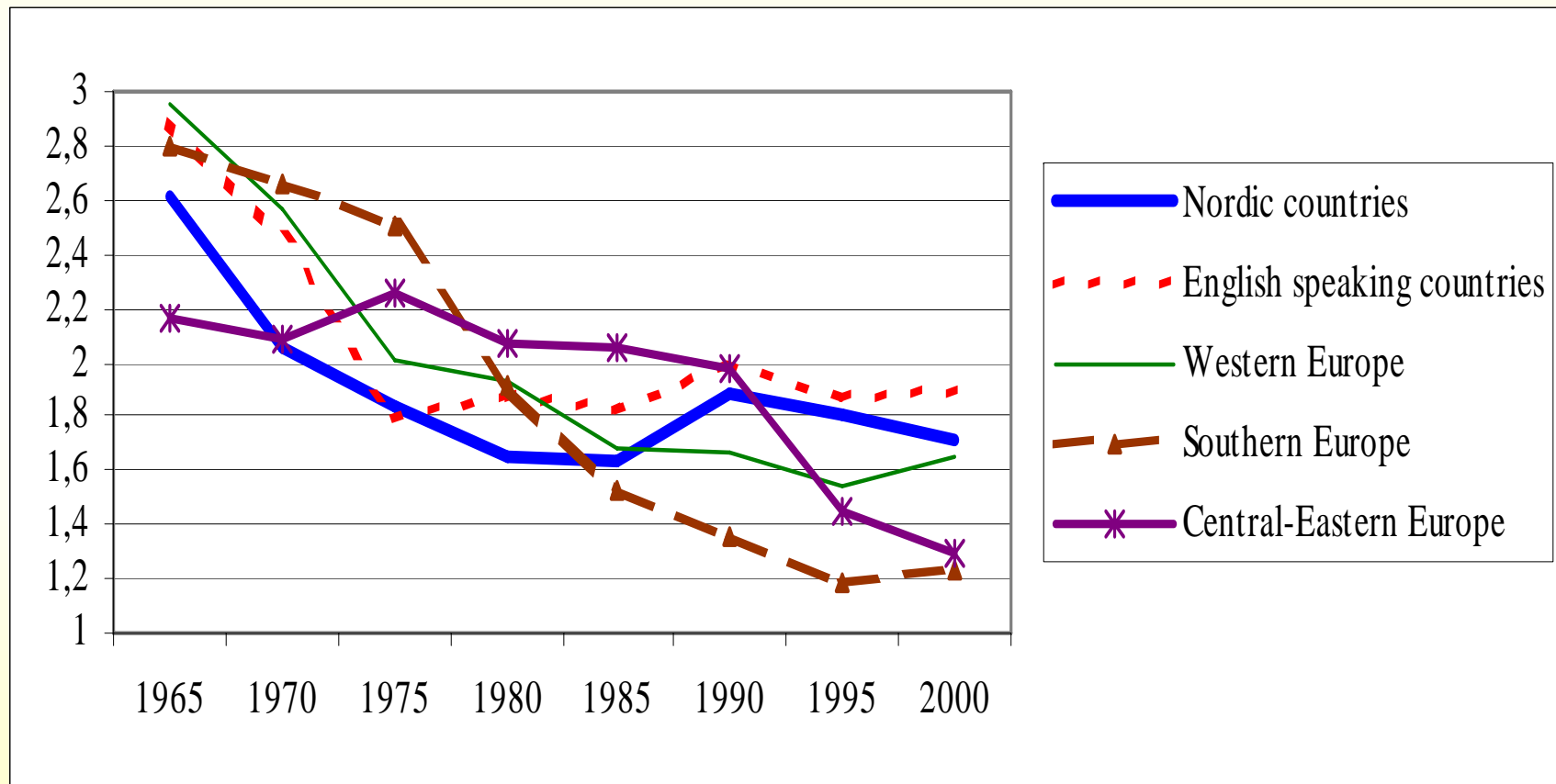
Ewa Fraczak

Inst. of Statistics and Demography

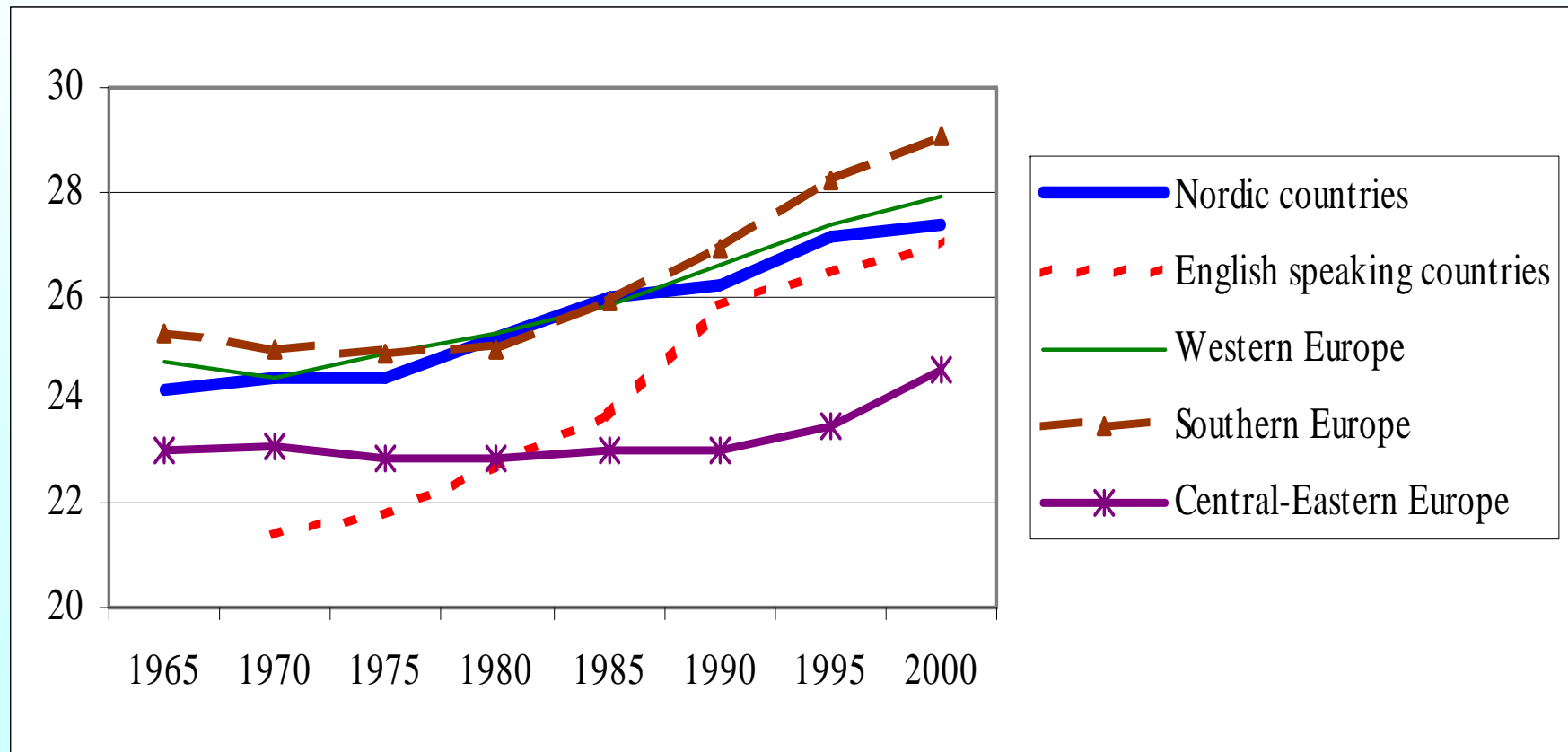
Warsaw School of Economics

Poland

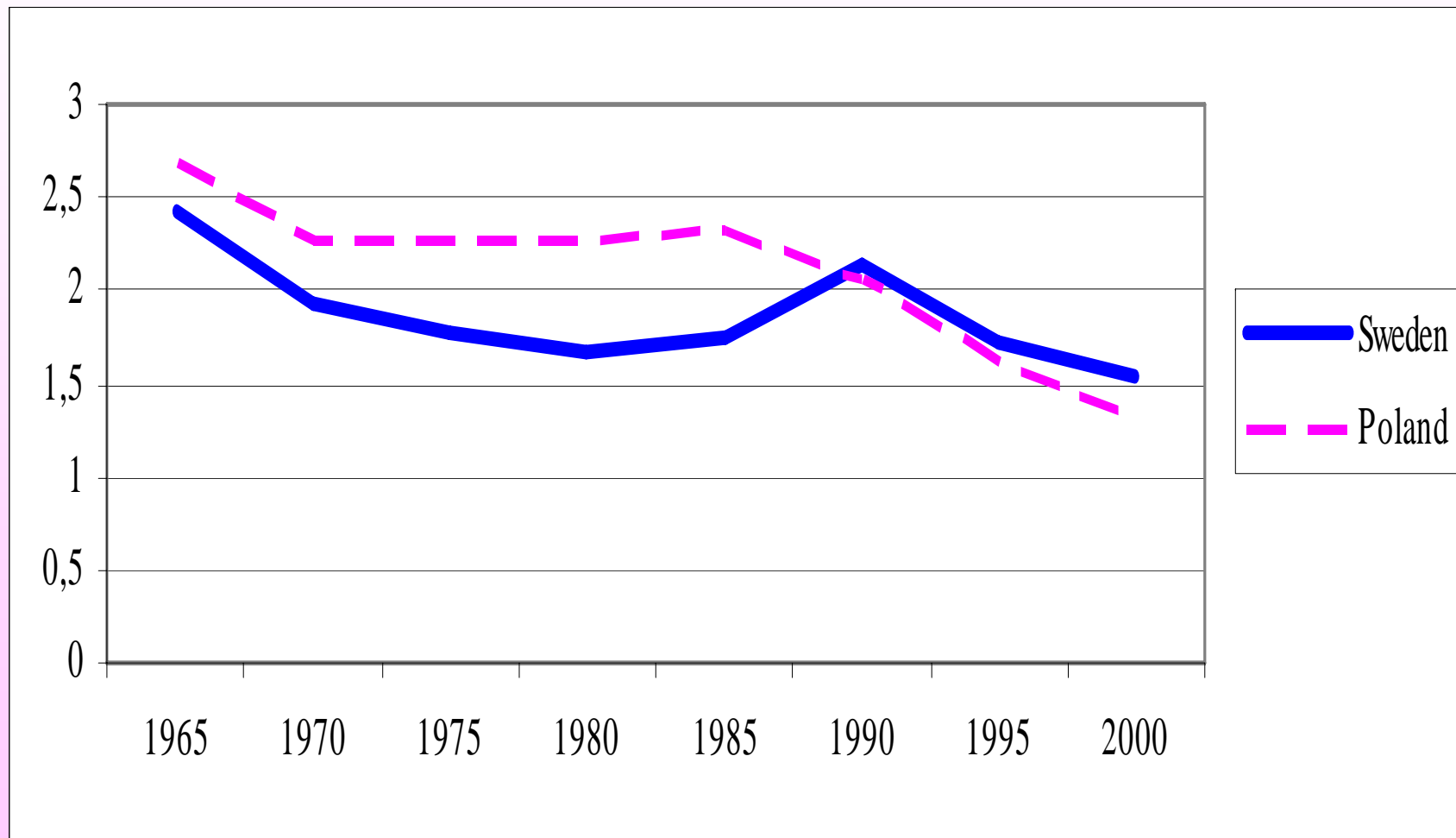
Total fertility rates in EU countries and the US, 1965-2000



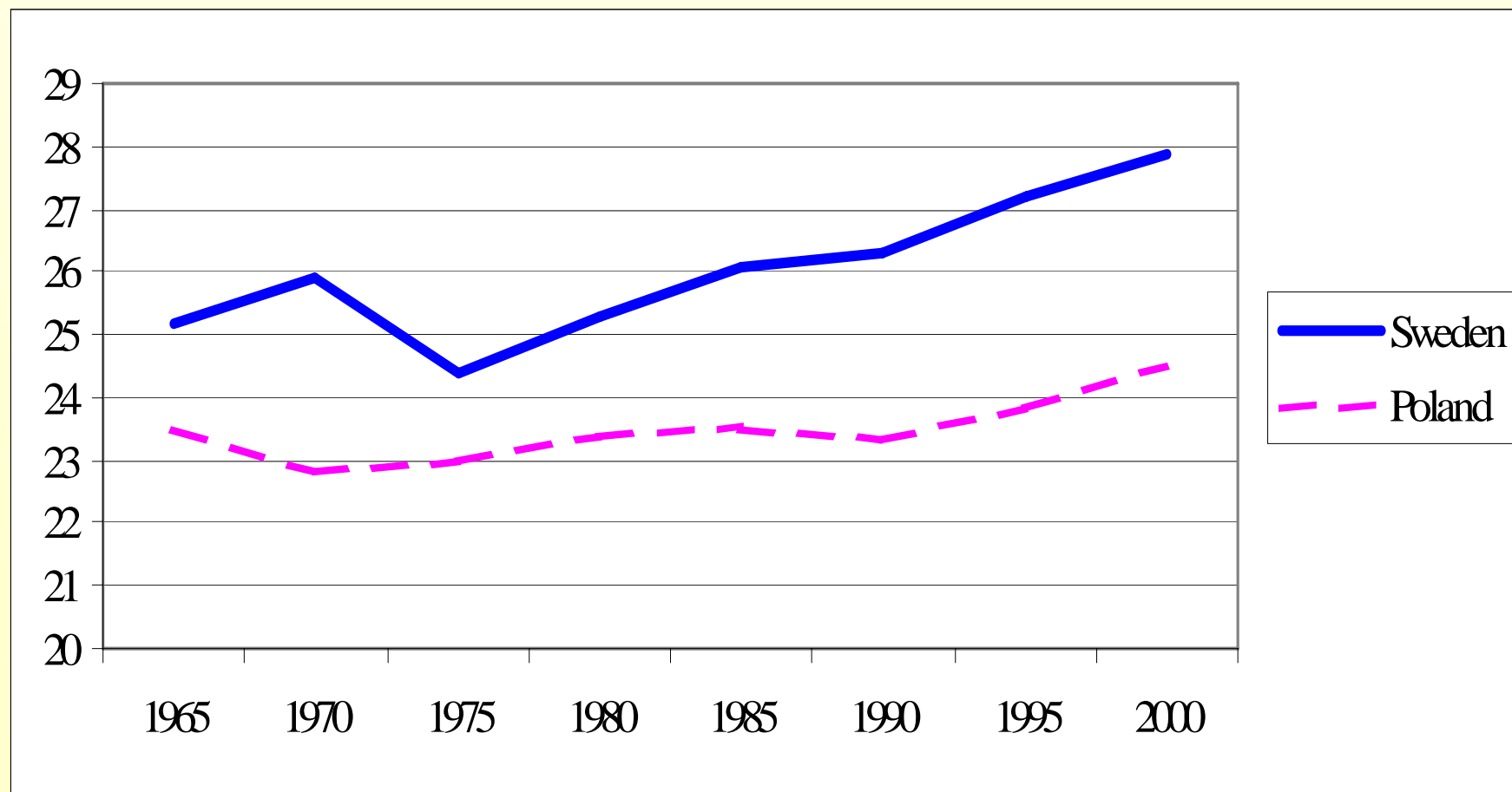
Mean age at 1st birth for women, EU countries & the US, 1965-2000



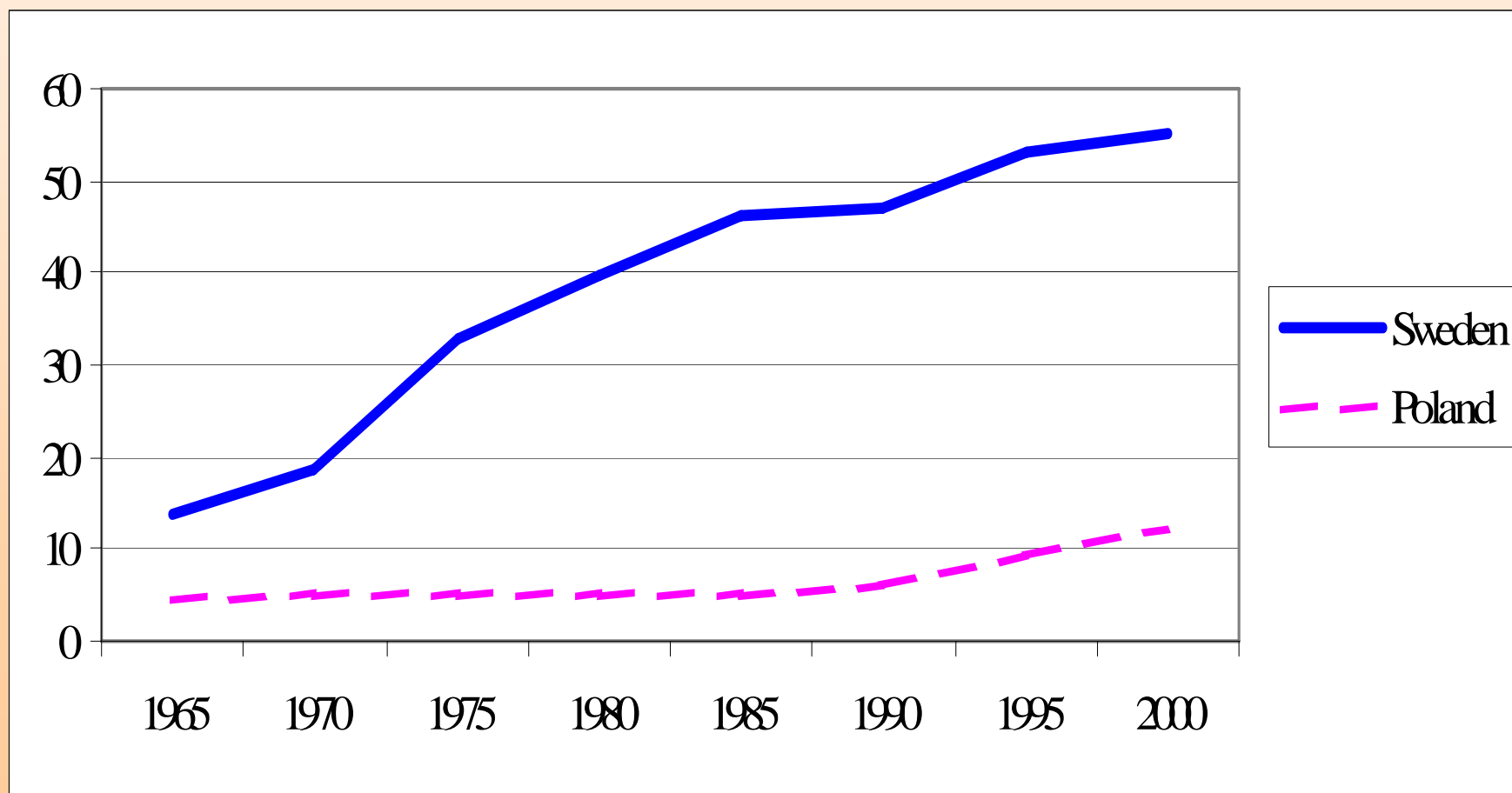
Total fertility rate in Sweden and Poland, 1965-2000



Mean age at first birth for women in Sweden and Poland, 1965-2000



Proportion of extramarital births (in %) in Sweden and Poland, 1965-2000



Data

- The Swedish Family and Fertility Survey of 1992/93; Polish Retrospective Survey 2001

Working sample: Swedish women & men childless at the 27th/29th birthday; Polish women and men childless at the 25th/27th birthday

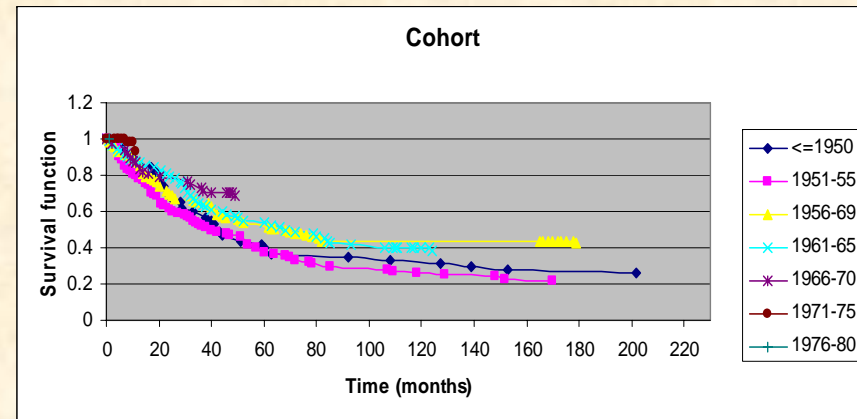
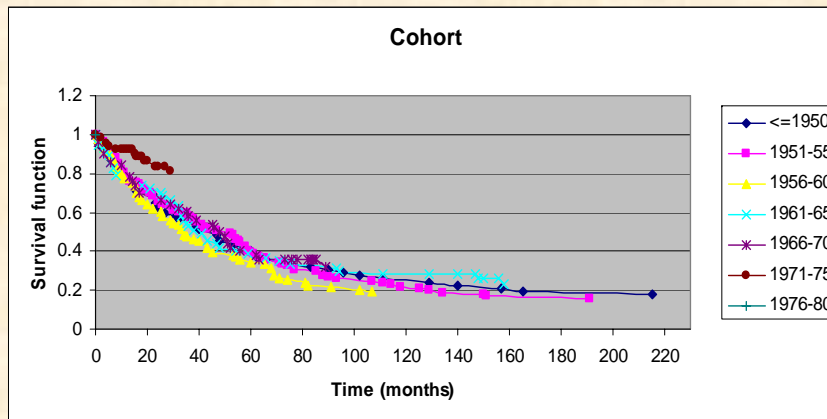
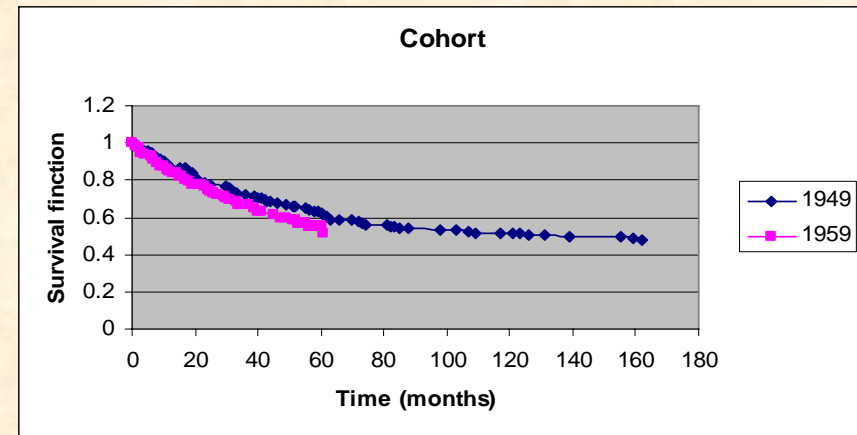
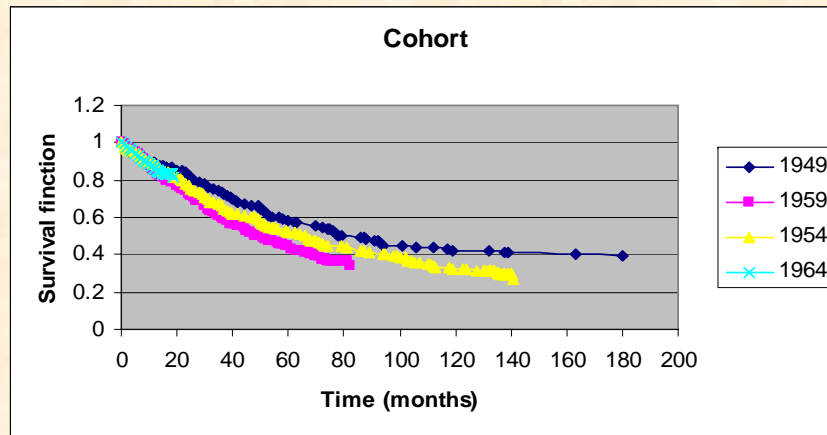
Observed until the first birth, or censoring:

- at the 44th birthday
- at union entry with a partner whose children moved in with the new couple
- at interview

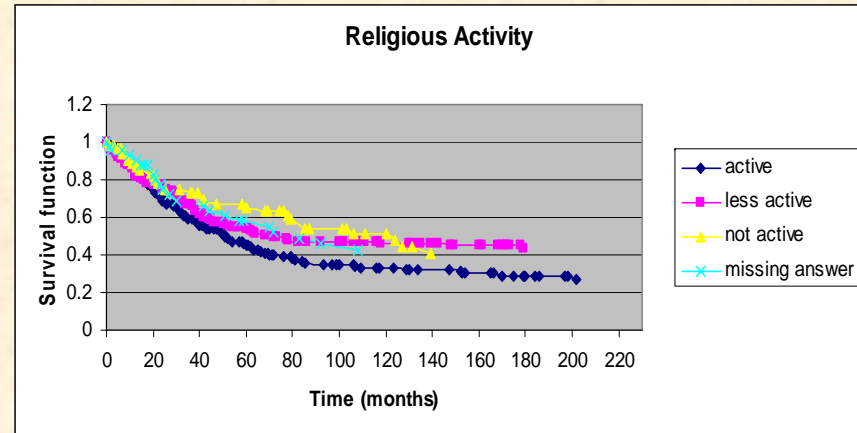
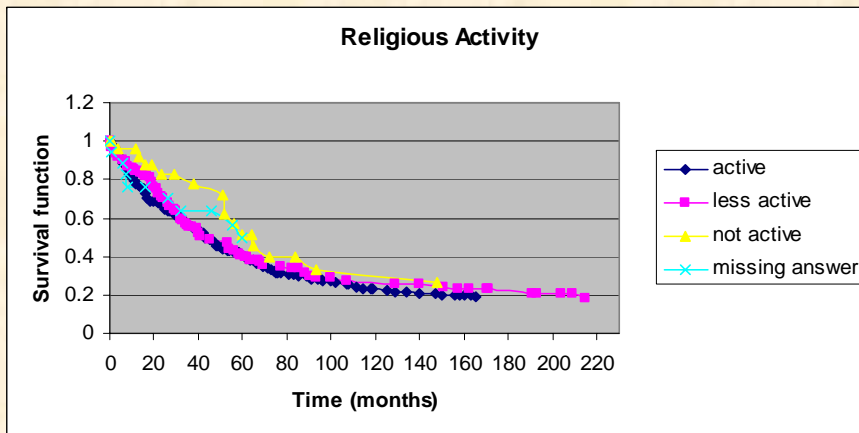
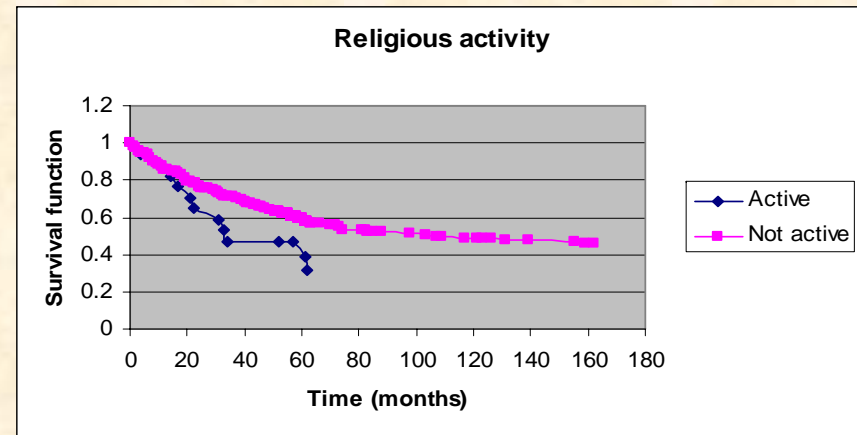
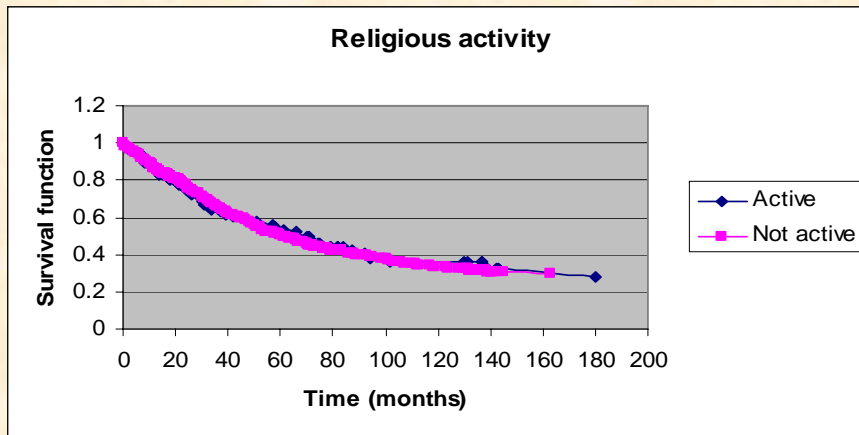
Swedish working sample: 1006 women, 377 men;

Polish working sample: 435 women, 467 men

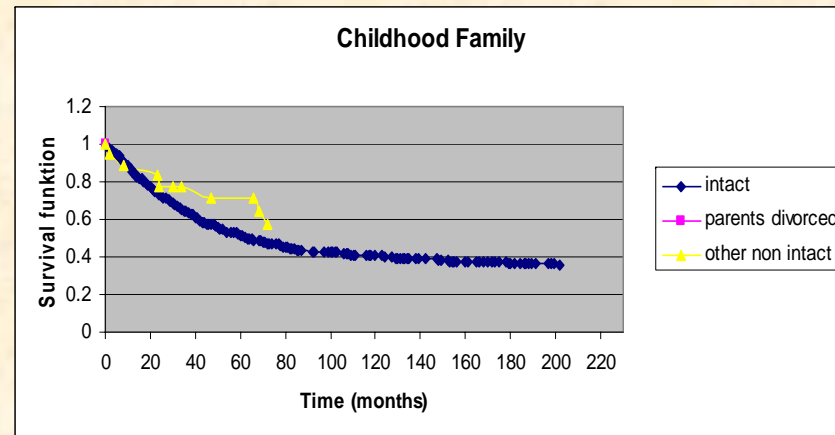
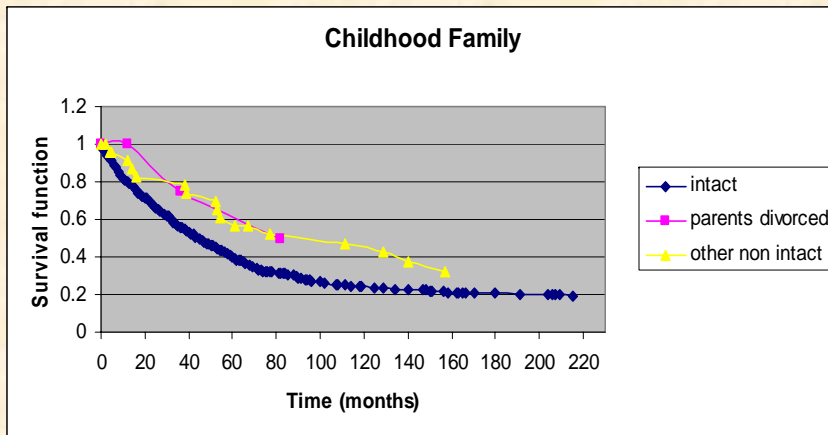
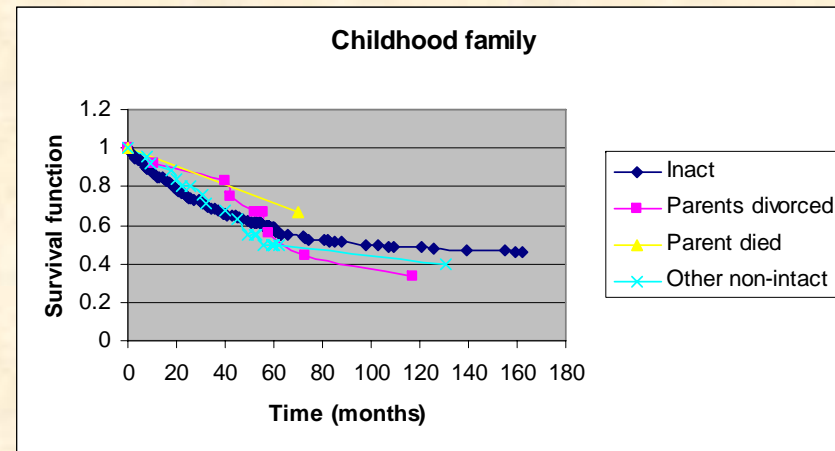
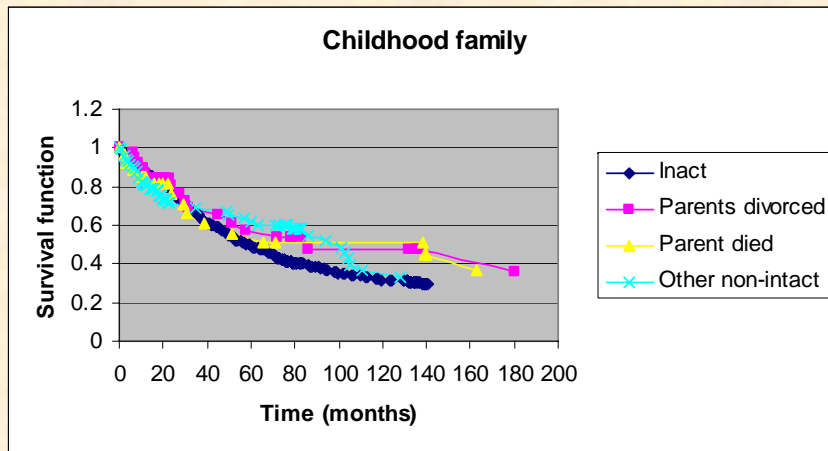
Life Table Survivor Functions for Swedish and Polish women and men, by cohort



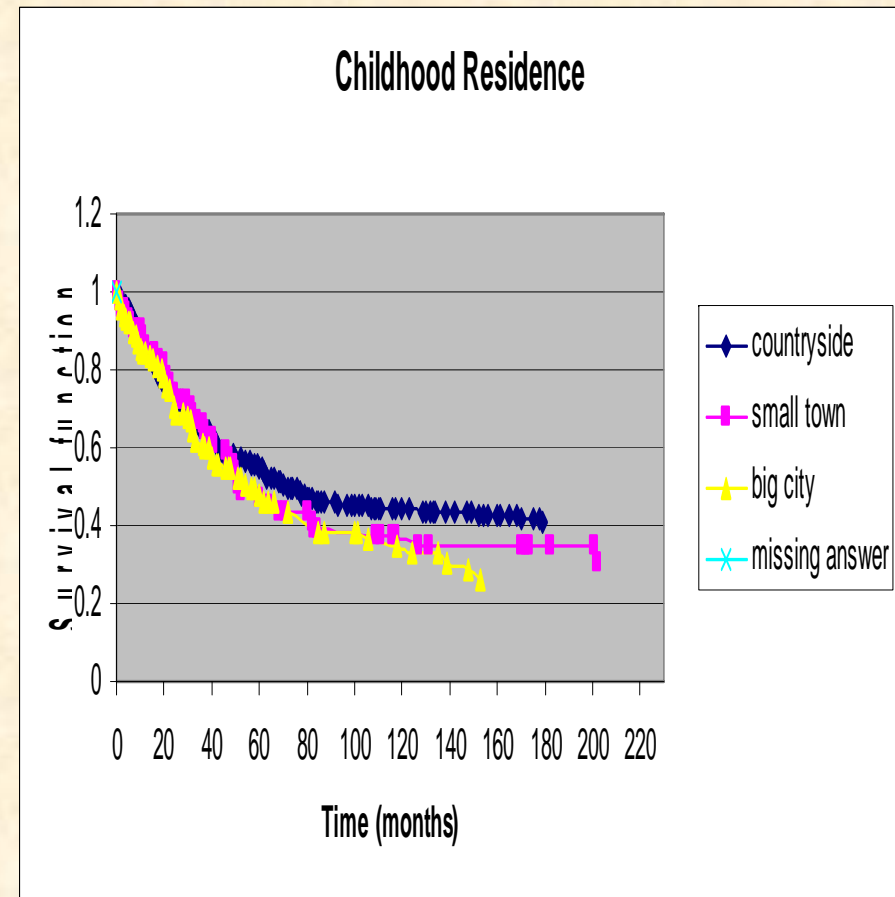
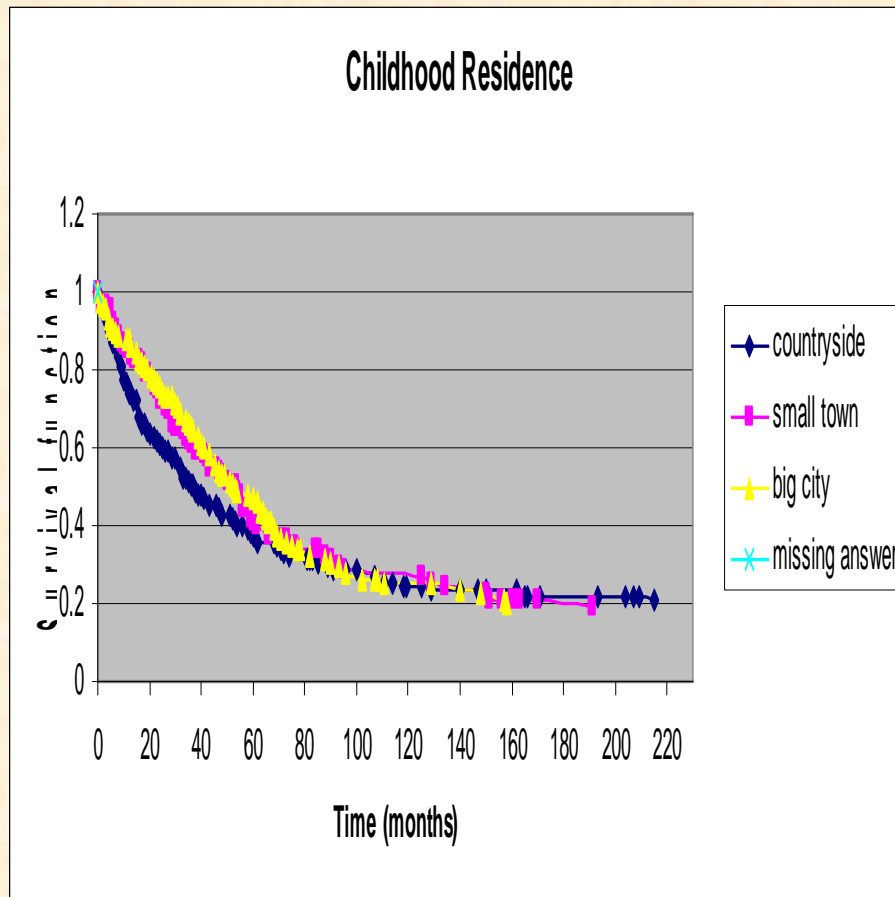
Life Table Survivor Functions for Swedish and Polish women and men, by religious activity



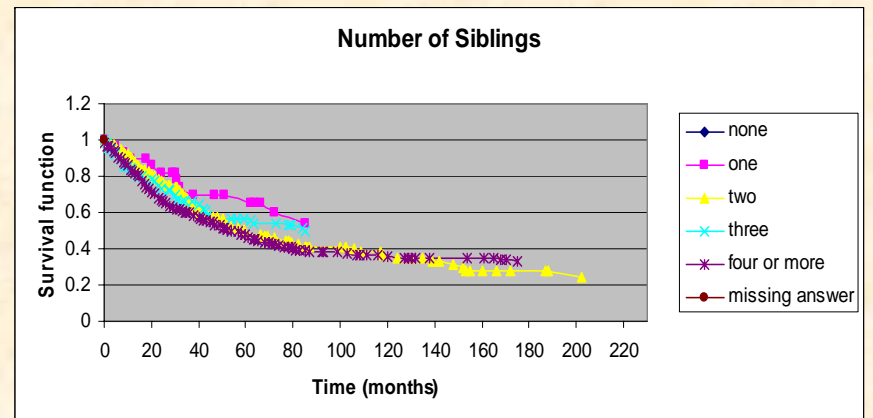
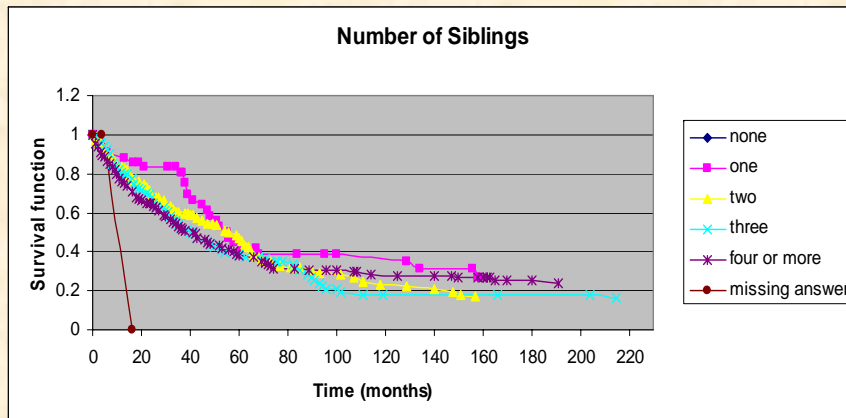
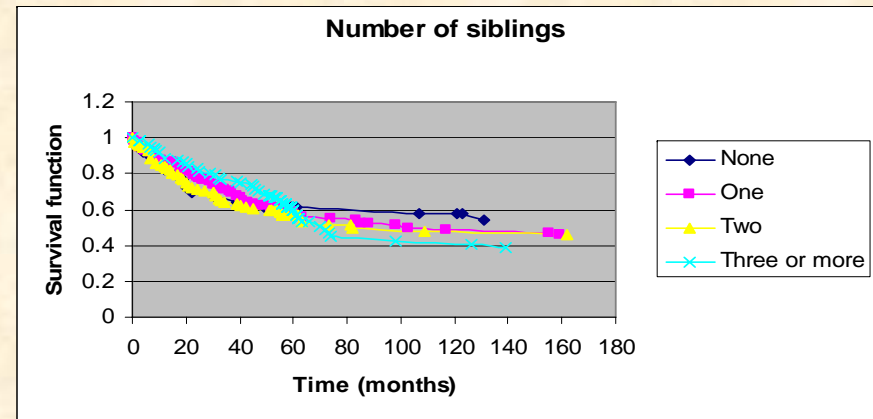
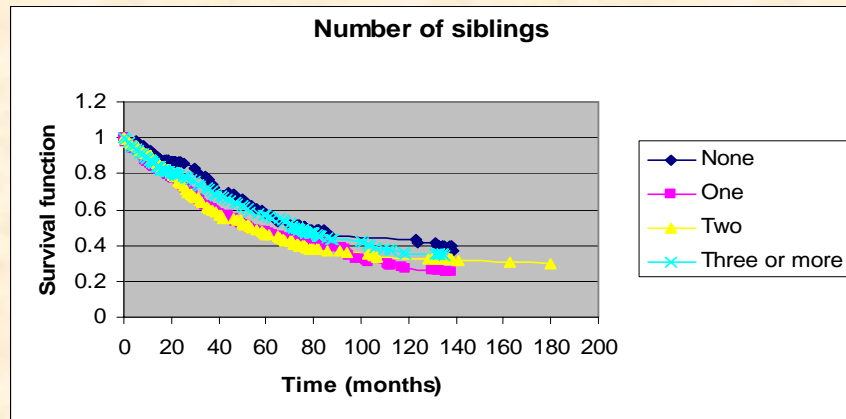
Life Table Survivor Functions for Swedish and Polish women and men, by childhood family



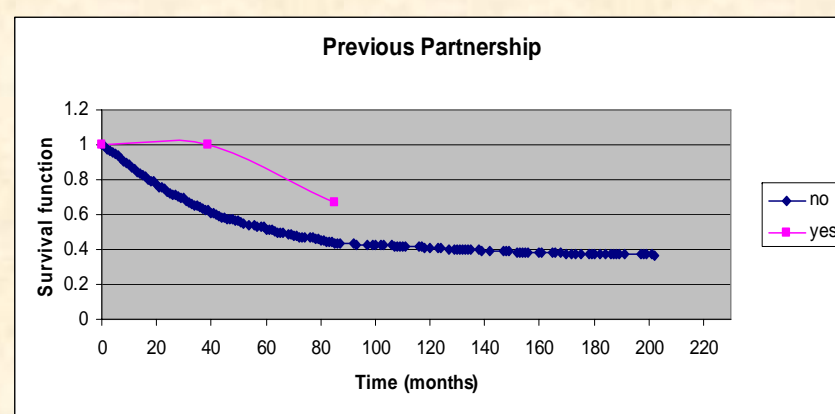
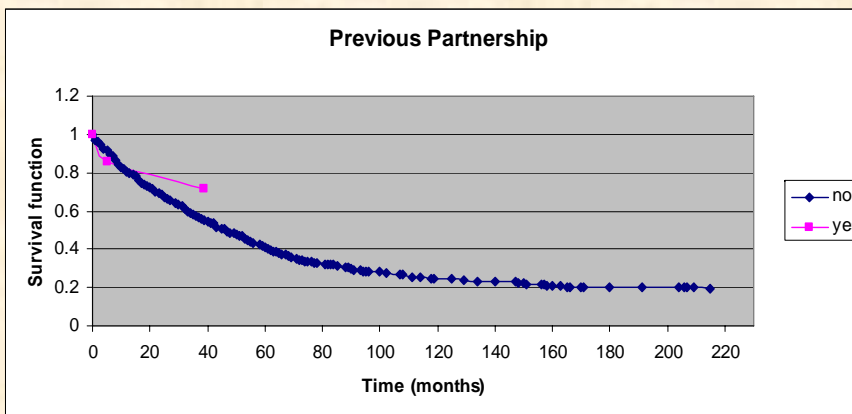
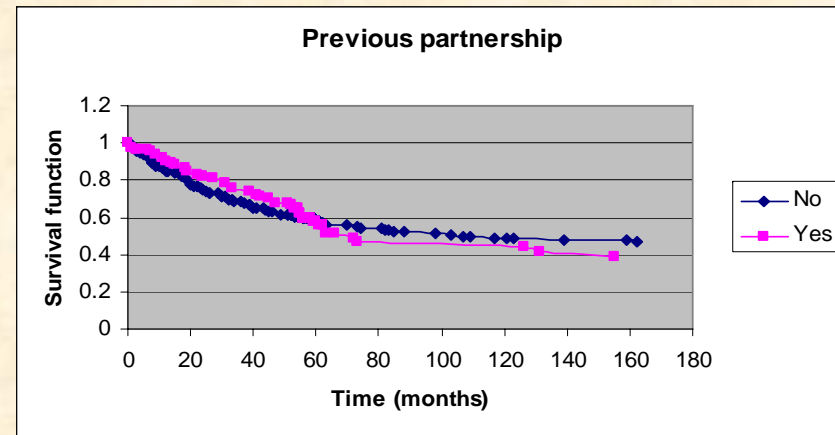
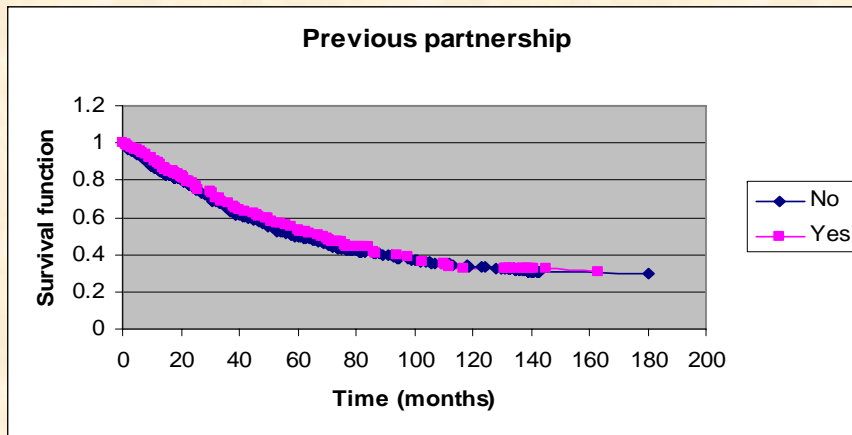
Life Table Survivor Functions for Polish women and men, by childhood residence



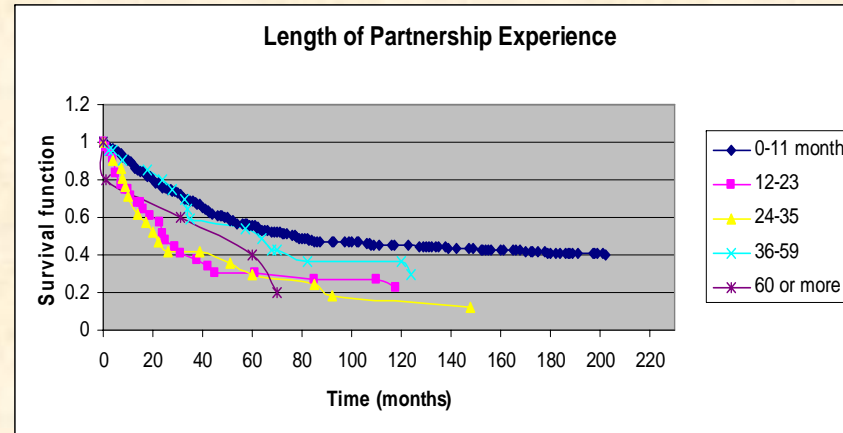
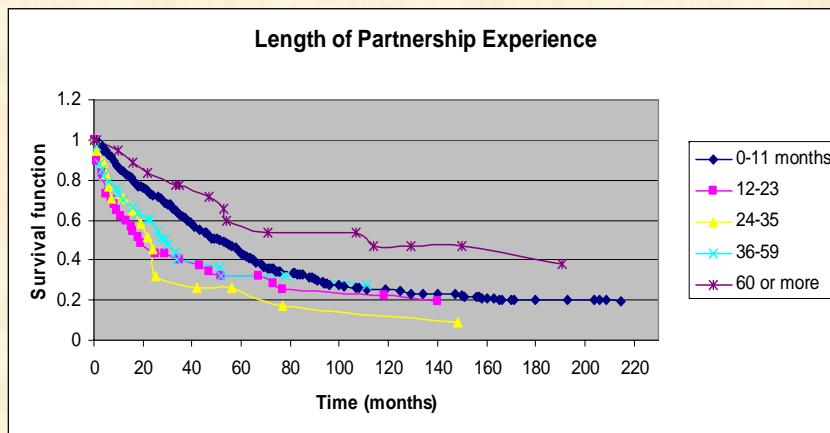
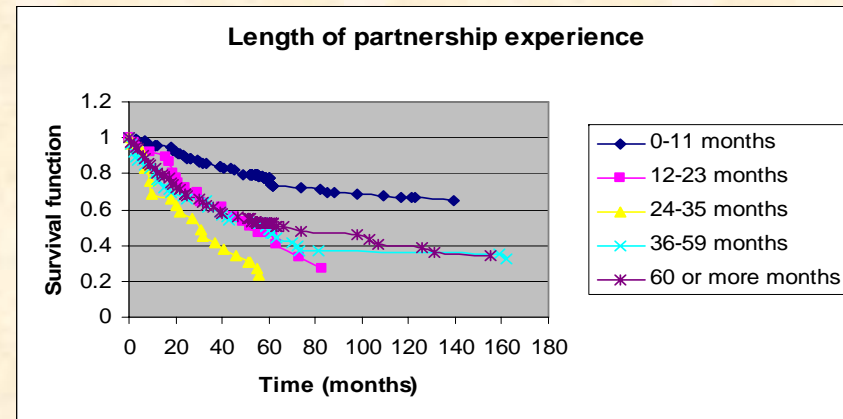
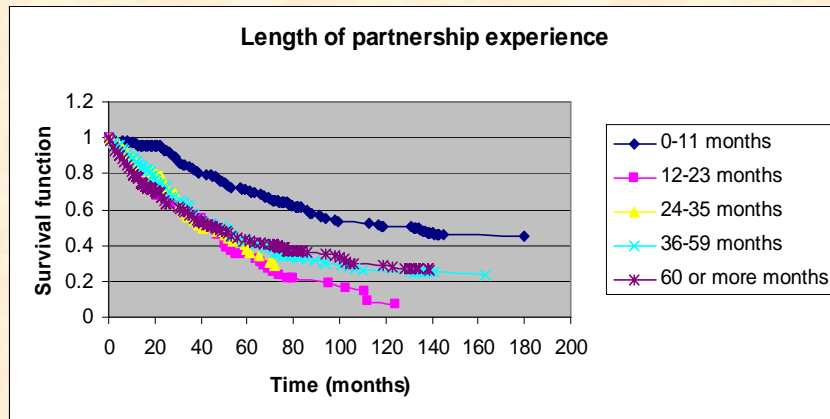
Life Table Survivor Functions for Swedish and Polish women and men, by number of siblings



Life Table Survivor Functions for Swedish and Polish women and men, by previous partnership



Life Table Survivor Functions for Swedish and Polish women and men, by partnership experience



Method

Intensity (hazard) regression

Piecewise-constant proportional hazards model

Exposure measured in month

Time variable: age of respondent

age 25-26 (Polish women), 27, 28 (women only), 29, 30-31, 32-34, 35-37, 38-40, 41-43 (both women and men)

Results presented in the form of relative risks.

Variables

I. Individual background:

cohort, religiosity, childhood family, siblings, childhood residence (Poland only)

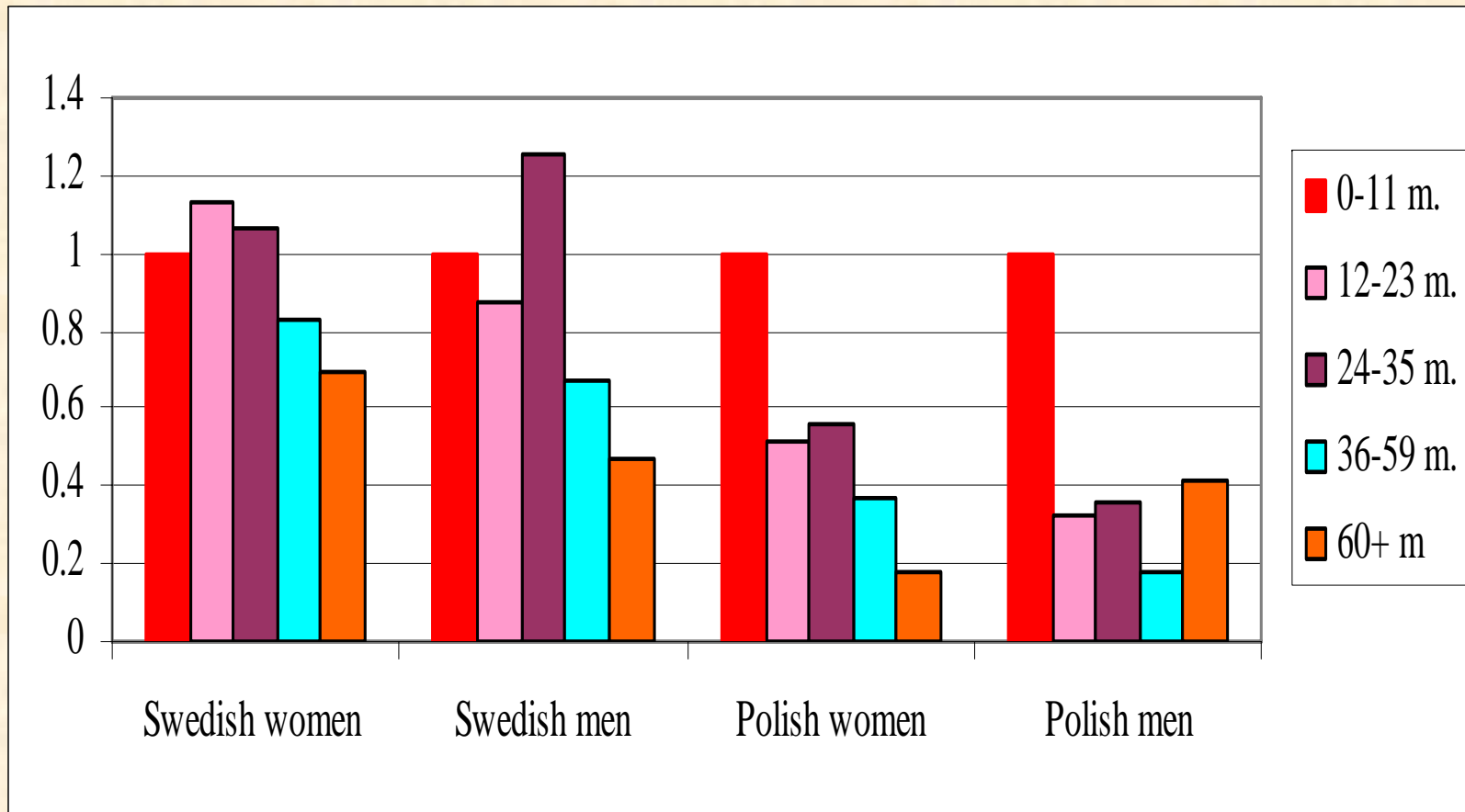
II. Partnership behaviour:

previous: union experience, previous unions,
current: current partnership status

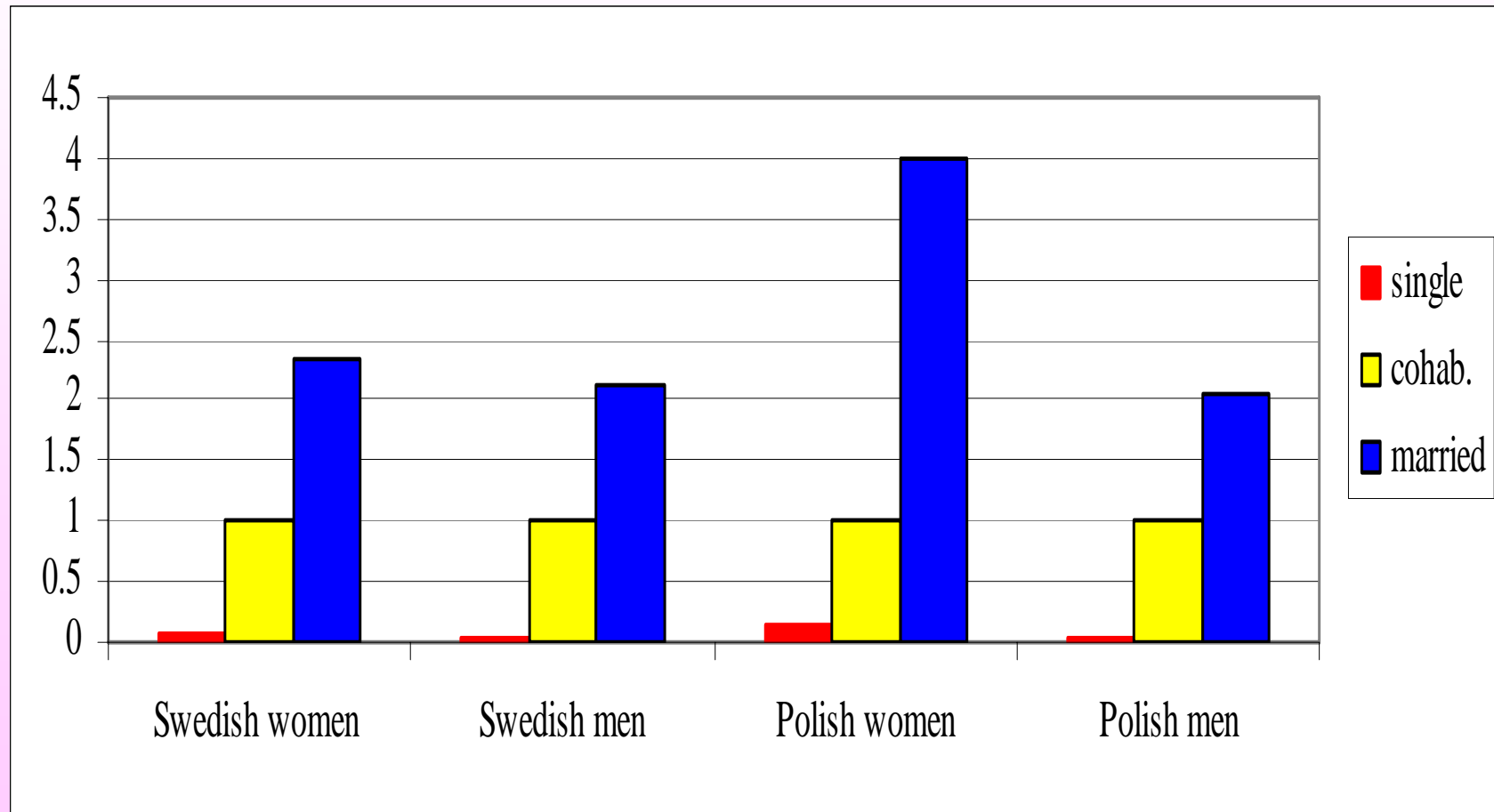
III. Current situation:

educational attainment, employment status,
calendar period

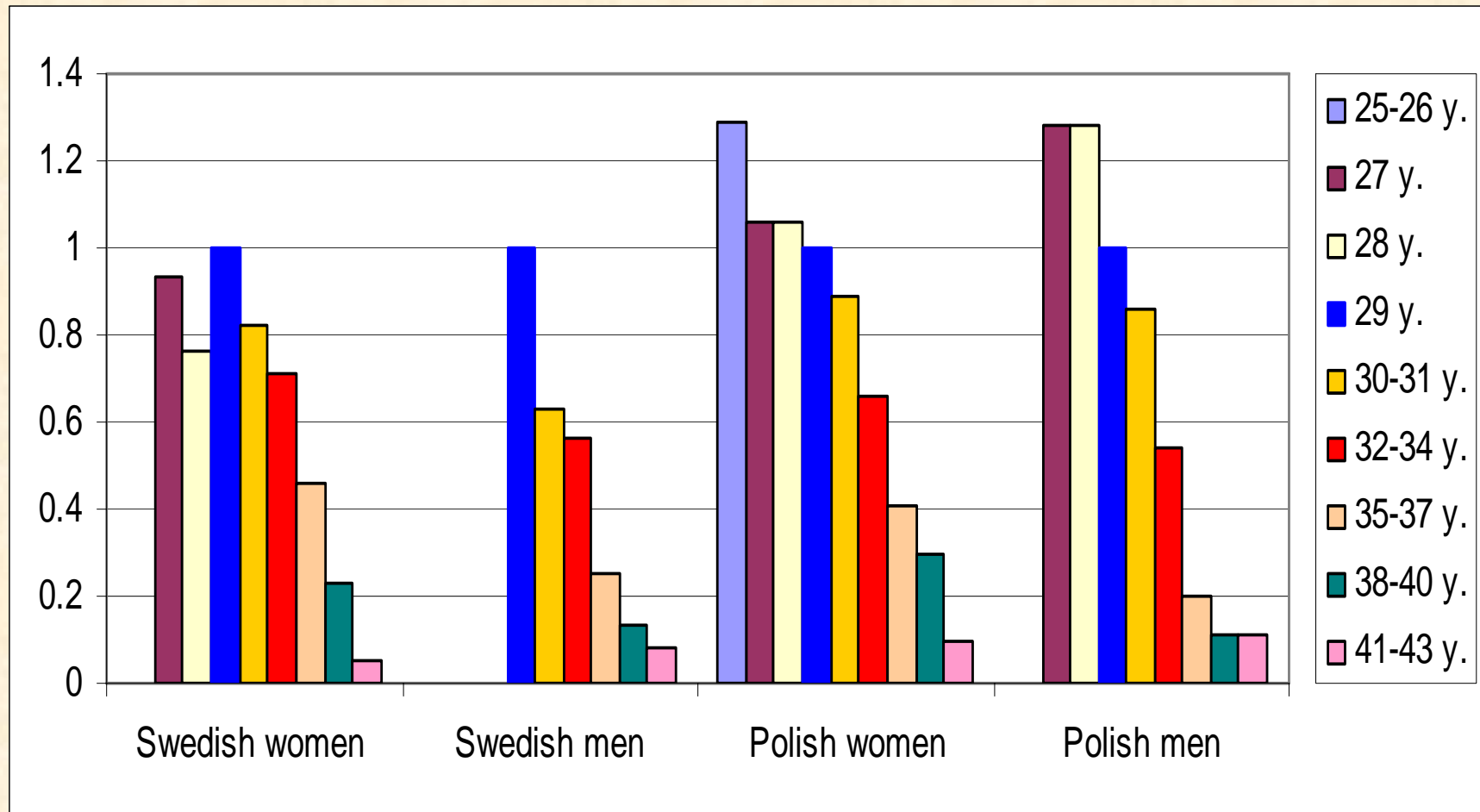
1st birth intensities at higher ages, by partnership experience (in month)



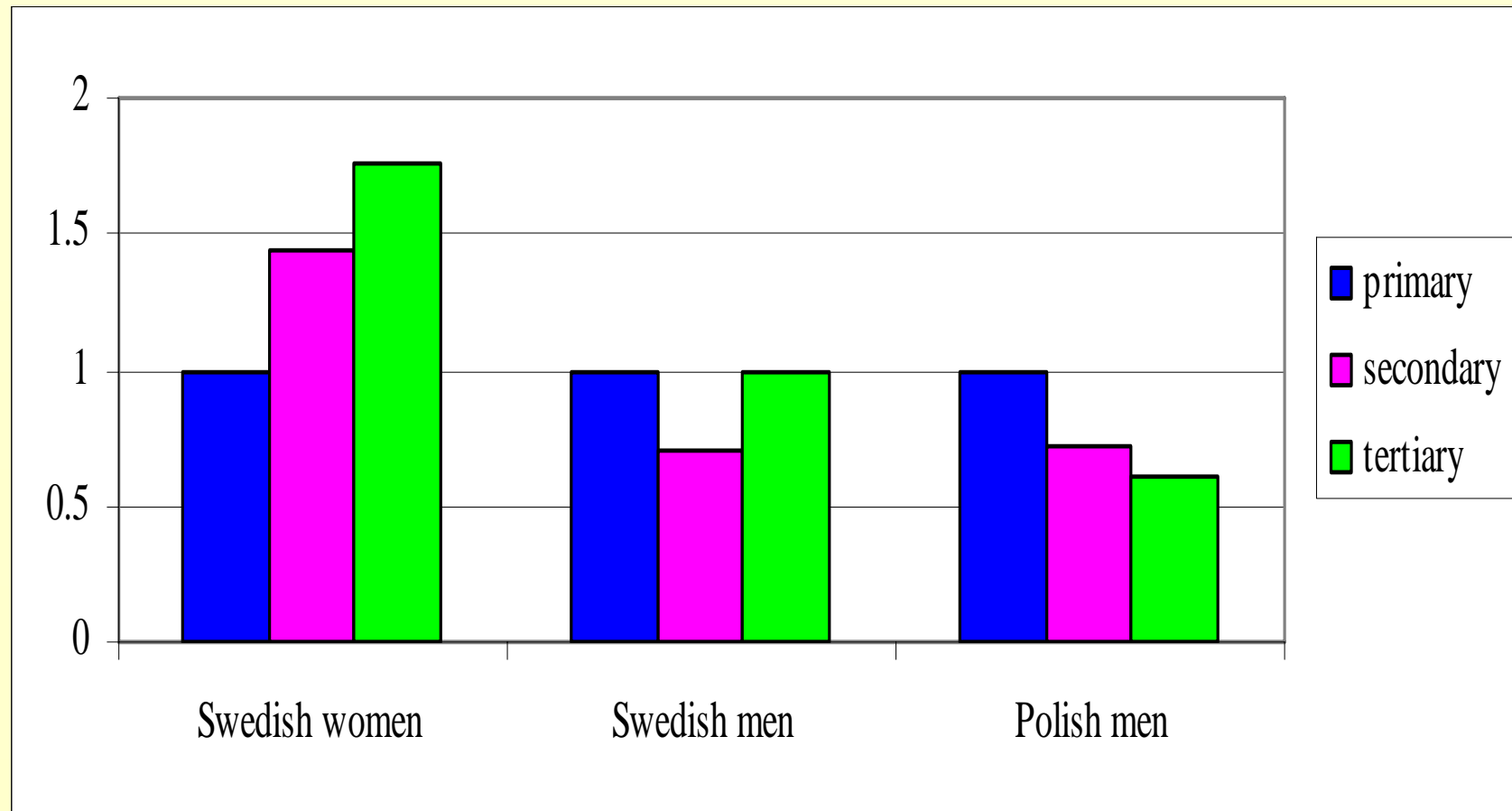
1st birth intensities at higher ages, by current partnership status



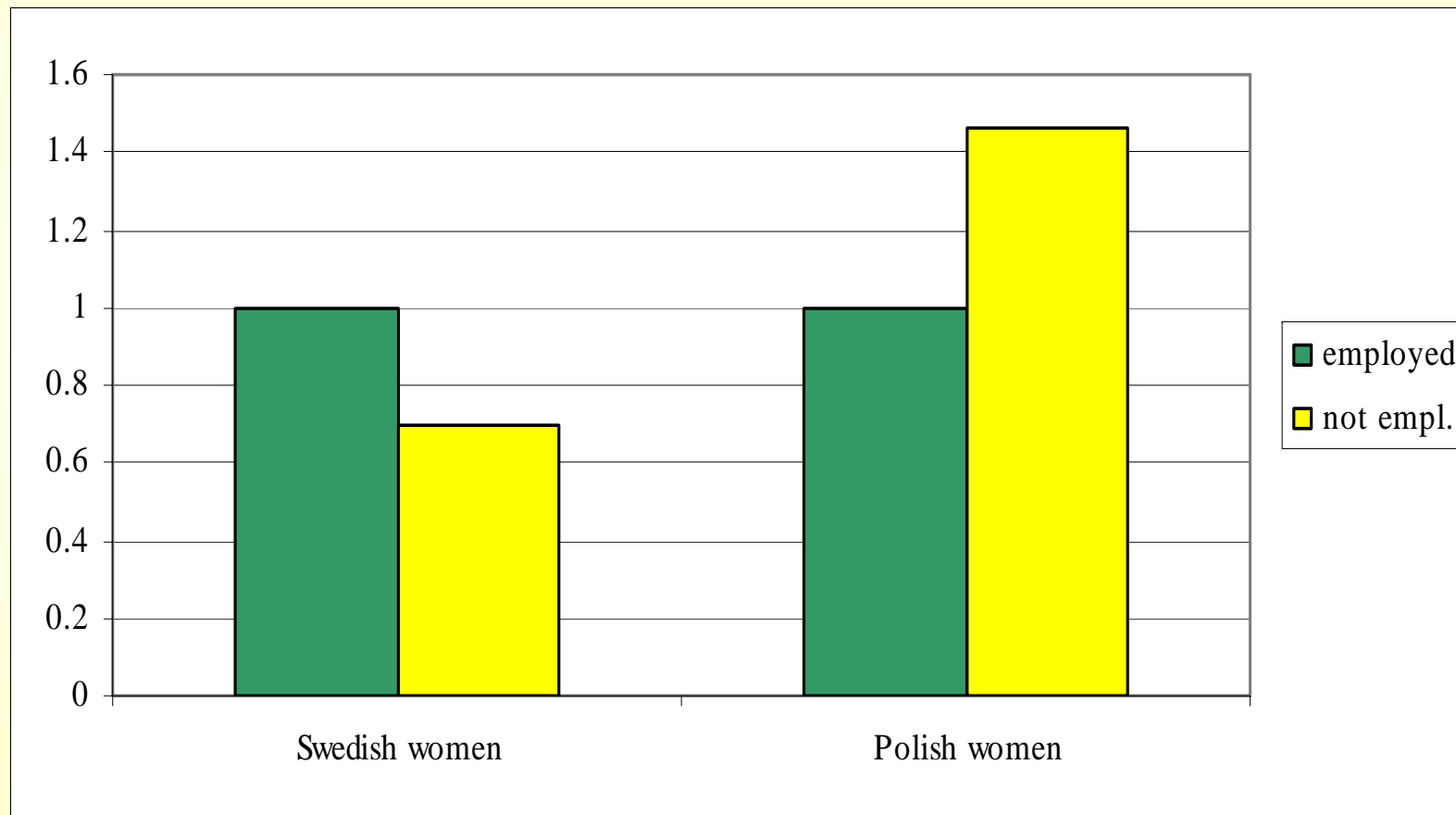
1st birth intensities at higher ages, by age of respondent (in years)



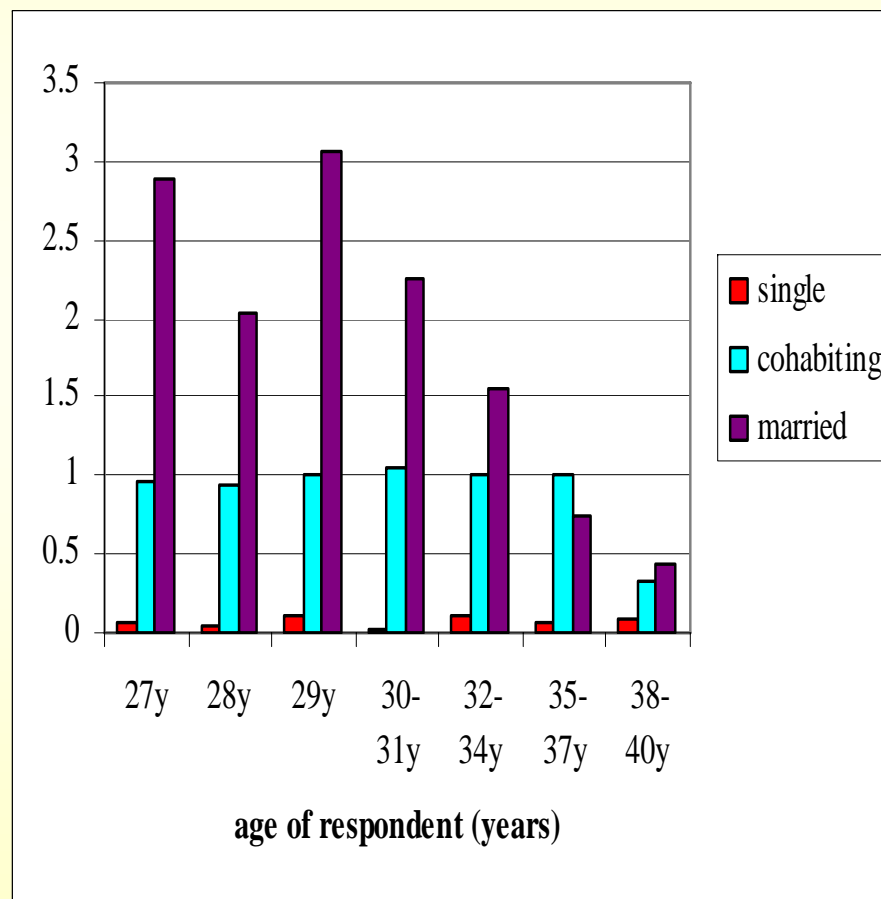
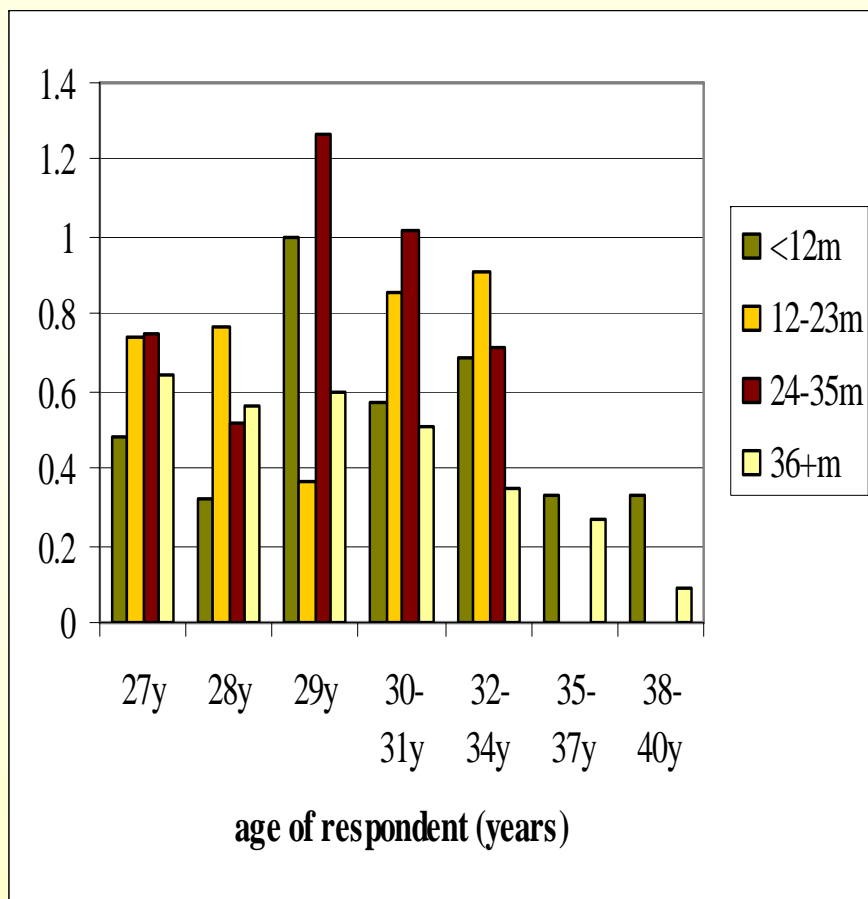
1st birth intensities at higher ages, by educational attainment



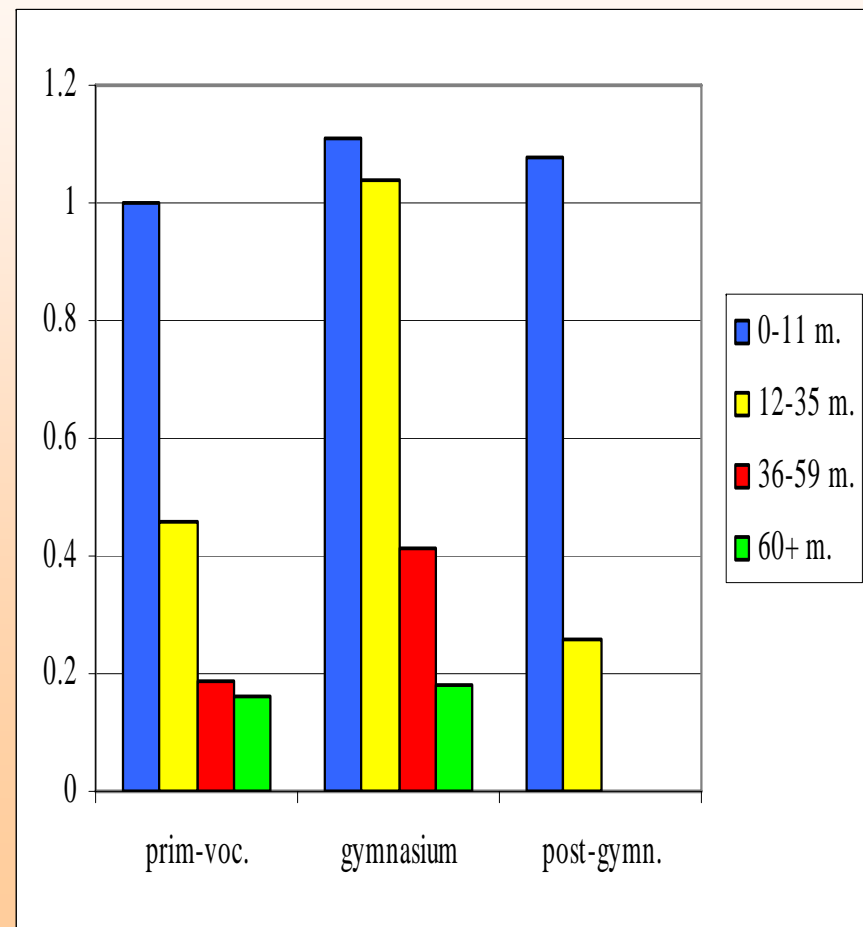
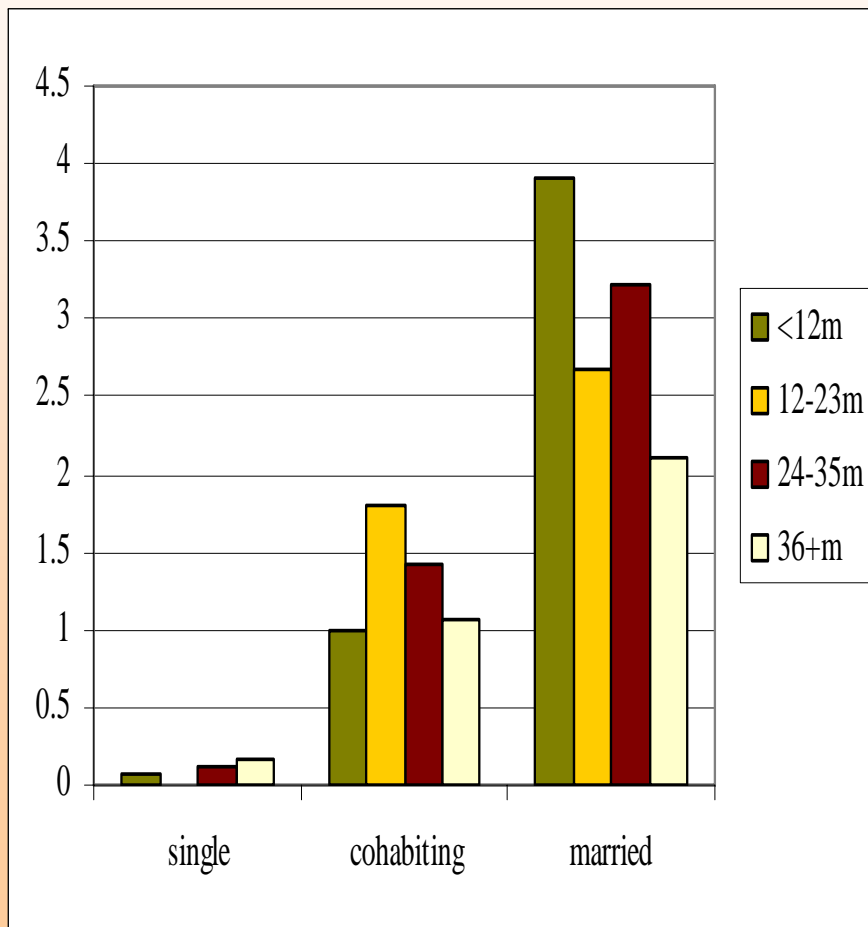
1st birth intensities at higher ages, by employment status



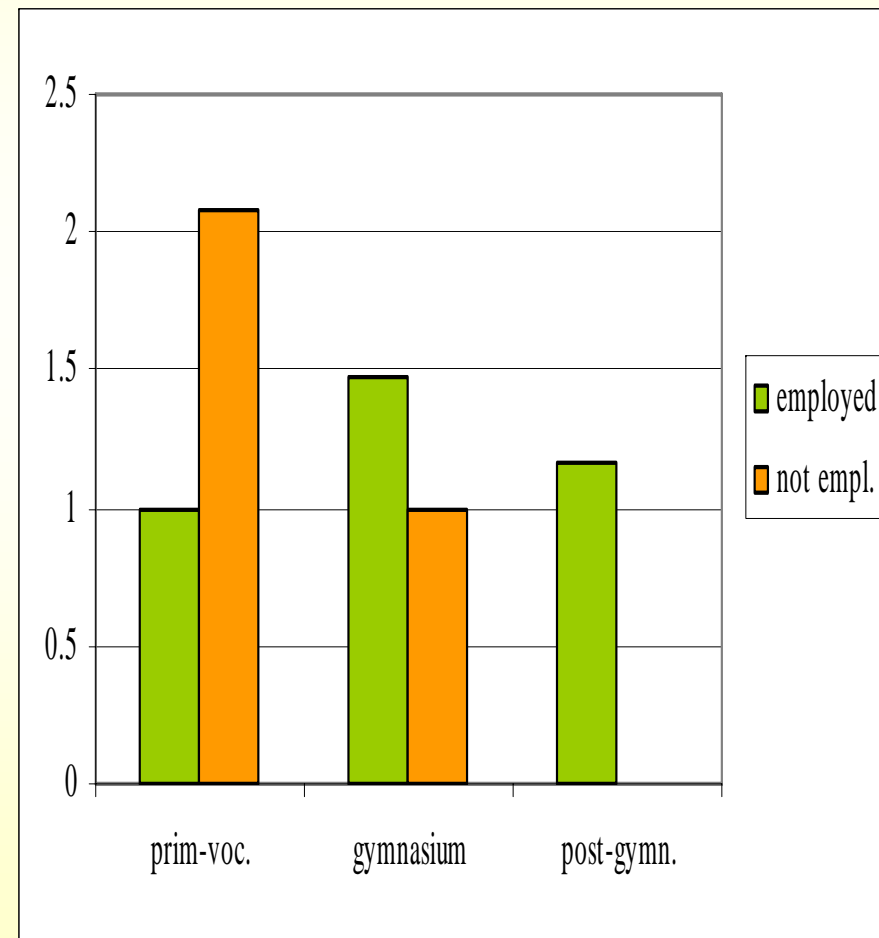
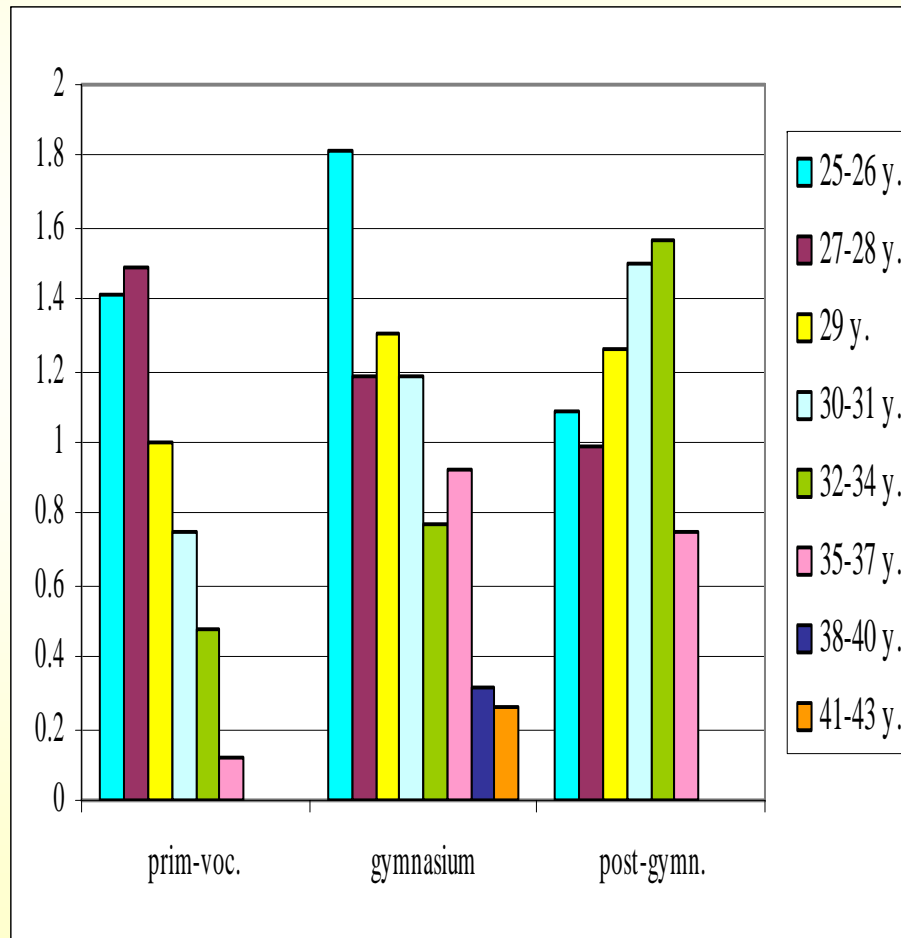
1st birth intensities at higher ages by age and partnership experience, as well as by age and current partnership status, Swedish women



1st birth intensities at higher ages by partnership experience and partnership status for Swedish women, as well as by partnership experience and educational attainment for Polish women



1st birth intensities at higher ages by age and educational attainment, as well as by educational attainment and current employment status, Polish women



Concluding remarks

Some variation across countries & genders, but

Most important mechanisms:

- via partnership behaviour (both former & current)
- via age (biological, social and normative aspects)