

Vienna Yearbook of Population Research

GUIDELINES FOR AUTHORS

1 GENERAL INSTRUCTIONS

The *Vienna Yearbook of Population Research* welcomes papers that examine various aspects of population trends as well as theoretical and methodological contributions related to population studies – in particular those relevant to developments in Austria. Brief commentaries and notes on previously published articles are also welcome.

Contributions in the *Vienna Yearbook of Population Research* are divided into four main categories:

Articles featuring original, peer-reviewed research articles;

Demographic Debates featuring invited contributions on topics related to the ongoing scientific debates in population research;

Austrian Data & Trends mapping long-term tendencies as well as recent trends in various components of demographic developments in Austria; and

Reprints containing reprints of selected recent research articles, especially those published in non-demographic journals. This option is mostly limited to researchers affiliated with the Vienna Institute of Demography and the IIASA.

In general, submissions are possible on a continuous basis. However, since the *Yearbook* is published once per year, authors are encouraged to check submission deadlines for the next volume in order to have their materials published without unnecessary delay.

Contributions for the *Vienna Yearbook of Population Research* should be in **English** (preferably in British English). Spelling and usage should be according to the conventions of either British or American English and should be consistent throughout.

Authors are encouraged to write concisely and to have their contribution checked for grammar and spelling. Poorly written contributions will not be accepted. The *Yearbook* provides final English editing.

The Yearbook does not impose strict restrictions on the **length of contributions**. However, we recommend that submitted manuscripts do not exceed 24 pages (including illustrations) or 7500 words. Submissions in *MS Word* are preferred; in exceptional cases *LaTeX* files are accepted as well. In this case the authors should provide a backup *PDF* file. Please inquire with the managing editor about other formats if necessary.

Submissions by e-mail are recommended as they speed up the reviewing and the production process. Please send your submissions and inquiries to populationyearbook@oeaw.ac.at

2 SUBMISSION PROCEDURE

2.1 First submission

Submissions should contain original, previously unpublished research. With the exception of the *Reprints* section, the *Vienna Yearbook* does not publish papers that have been published elsewhere. However, we do accept submissions that have been published as working papers or in conference proceedings with limited circulation. First submissions do not have to adhere to our guidelines on the final manuscript layout. All pages must be typed double-spaced (11 or 12 point type size), with margins allowing for editor's notes.

Each submission has to contain a cover page specifying

- Title of submission
- Names of all authors (main author first), their current position and institutional affiliation
- Name, postal address, email, and phone number of the corresponding author

The next page contains title of the submission and an abstract (about 150 words). The following pages contain the text of the paper, illustrations (figures, tables, drawings, photographs), notes, acknowledgements, list of references, and appendices when included. The position of all illustrations should be clearly indicated in the text, unless they are already in place.

2.2 Reviewing procedure

Submitted manuscripts (except invited contributions) are subject to **peer review**. This process is not used in the invited *Demographic Debates* articles and the contributions to *Austrian Data & Trends* section. Each manuscript has two referees; the editorial board contacts at least one external referee to judge the merits of the paper. The names of reviewers are not disclosed to the authors of the manuscript under review. The reviewing process takes up to three months. The editors rely heavily on the judgments of the reviewers, although they are not bound by them. The authors are informed of the board's decision; in case of rejection or request for modifications, the authors receive an explanation or a specification of the modifications suggested by the referees. Resubmissions should address comments provided by the referees and the editorial board. The board may contact an external referee to comment on resubmissions if necessary.

2.3 Final manuscript

Upon acceptance, the authors are asked to provide the **final manuscript** prepared according to the style and layout guidelines specified below. A strict adherence to this uniform standard helps to speed up the production process. The *Yearbook* provides final English editing. The editorial board retains the right to edit submitted contributions. Manuscripts requiring extensive editing will be returned to the author for approval before typesetting. Final pagination and insertion of running titles is arranged by the publisher.

Authors contributing to the *Reprints* section must provide a written statement that they were granted permission to reproduce their contribution.

After publication, each author receives one hard copy of the Yearbook as well as an electronic version of his/her contribution in PDF (Acrobat) format. Unless explicitly stated otherwise, the authors are granted rights to reprint and distribute their article and make it available on their or their institute's Internet site. In the latter case, they have to include a complete reference to *Vienna Yearbook of Population Research* (listing all the authors, year of publication, title, volume of the *Yearbook*, and page numbers).

3 STYLE & LAYOUT GUIDELINES (final manuscripts)

This section provides a detailed overview of the style & layout required for the final manuscript. This overview follows the established structure of articles as they appear in the *Yearbook*.

3.1 Language, style, and content

- Explain all acronyms & abbreviations when they first appear in your text, such as “TFR (period total fertility rate)”
- Briefly define or explain all the technical terms
- Italicise foreign-language phrases
- Both British and American English are accepted although British English is preferred. Be consistent in spelling and usage throughout the article
- Write in a concise, straightforward style
- Use footnotes that appear on the bottom of a given page
- We encourage active writing (“We found that...”) whenever appropriate

3.2 Structure & layout of the contributions

Title page contains the following items:

- **Title of contribution**
- **Authors' names**
The main author is listed first. If the corresponding author is not the first author, he should be clearly indicated. The e-mail and postal address of the corresponding author should be included.
- **Abstract**
The abstract should summarise the contents and conclusions of the article in about 150 words.

First page of *Reprints* should contain a footnote indicating the complete reference of the original publication. Any important notes, e.g., on previous versions of the paper should be indicated in a first page footnote as well. Acknowledgements, especially more extensive ones, should be specified in the “Acknowledgements” section before the Reference list (see below).

Larger contributions should be structured by the use of short textual section heading or subsection headings. Sections and subsections should be numbered in Arabic. We accept three levels of subheadings, which should be numbered as follows: 1 Sections; 1.1 Sub-sections; and 1.1.1 Sub-subsections. The first letter of each word in the heading should be capitalised.

Acknowledgements and list of references appear below the main body of text. Appendices, when included, are listed last.

3.2.1 List of items

Lists may be presented with each item marked by either bullets or numbers.

Bulleted items

- item one
- item two
- item three

Numbered items

1. item one
2. item two
3. item three

3.2.2 Equations

We recommend that authors use formula editors for their contributions. Typing simple formulae or mathematical expressions directly into the contribution is also acceptable. Displayed equations should be numbered consecutively, with the number set flush right and enclosed in parentheses, e.g.:

$$\frac{\partial P}{\partial t} + \frac{\partial P}{\partial a} + \mu(a)P = 0 \quad (1)$$

In multiple-line equations, the number should be given on the last line. Displayed equations are to be italicised and centred on the page width. Standard English letters like “a” are to appear as italicised in the text (e.g. “a”) if they are used as mathematical symbols. Punctuation marks are used at the end of equations as if they appeared directly in the text.

3.2.3 Theorem environments

Theorems and lemmas. Theorems, lemmas, definitions, etc. are set on a separate paragraph, with 1 line extra space above and below. They are to be numbered consecutively within the contribution.

The citation command can be used to cross-link for theorem declaration, e.g., “see Theorem 1 and Lemma 1”.

Proofs. Proofs should end with a box. □

3.2.4 Figures & illustrations

Figures and illustrations should be numbered according to their sequence in the text. They should fit the format of the *Yearbook* which allows maximum size of 12.8 by 20.5 cm and should not exceed one page of the *Yearbook*.

Colour figures and illustrations are not accepted. Figures should be inserted at the nearest appropriate point following their first reference in the text. Alternatively, the position of the figures should be clearly indicated in the text (e.g., “[Figure 5 about here]”) and each figure then provided on a separate page.

Please provide all figures including the source data also in separate MS Excel or EPS Files.

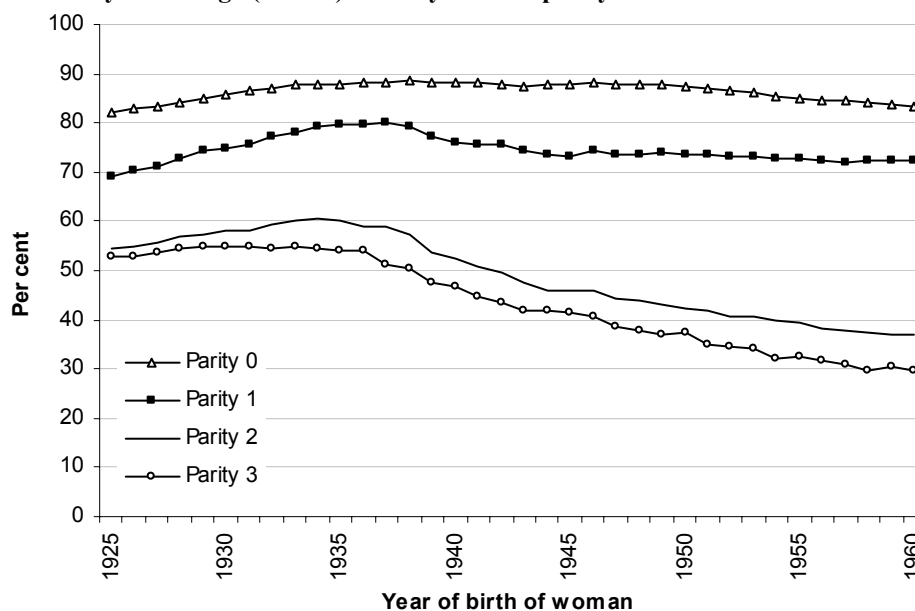
References to figures should be done as follows: “Figure 5”, “see Figure 5 and 7”, etc.

Each illustration should have a self-explanatory caption explanatory caption and an appropriate description of the x and y-axes (preferred font Arial bold, size 8). The caption

must be placed above the figure. Notes and data source list are aligned left and listed below each figure when appropriate.

Different lines, bars, and other features in the graphs should be clearly distinguishable in black and white print. Below we provide an example of a standardised figure published in the *Vienna Yearbook of Population Research* 2005 (Prskawetz and Zagaglia 2005, p 145):

Figure 2:
Probability of having a(nother) child by current parity. Austrian women born in 1925 to 1960



Source: Statistics Austria (2005).

3.2.5 Tables

Tables should be numbered according to their sequence in the text and should be inserted at the nearest appropriate point following their first reference in the text. Alternatively, the position of each table should be clearly indicated in the text (e.g., “[Table 3 about here]”) and each table then provided on a separate sheet of paper.

Tables should have self-explanatory captions. The tables should fit the format of the *Yearbook* which allows maximum table size of 12.8 by 20.5 cm and preferably should not exceed one page of the *Yearbook*. Notes and data source list are aligned left and listed below each table when appropriate.

Our preferred table layout is illustrated below:

Table 5:
Marriage and divorce rates among women in countries A and B in t and t+5 (per thousand)

	Country A		Country B	
	Marriage rates	Divorce rates	Marriage rates	Divorce rates
t	25	12	18	12
t+5	23	14	19	16

Note: Data for t+5 are preliminary estimates.

Sources: Carrot (2002) for marriage rates; Parsnip (2000) for divorce rates.

3.2.6 Footnotes

Footnotes should only be used if essential. They appear at the bottom of the page. They should be numbered in the text, indicated by superscript Arabic numerals.

3.2.7 Acknowledgments

This section should appear before the Reference list. Funding information may also be included here.

3.2.8 References

- Cite the references in the text in parentheses after the text which requires a reference, e.g., (van Dalen 2000) or (Garfield and Blacksmith 1979).
- Separate a series of references with semicolon, e.g. (Grey 1989; White and Black 1998; Green et al. 1999). Do not use any other style of parentheses.
- For more than two authors, use “et al.” throughout, e.g., (Blondie et al. 2002). However, the list of references should list each author.
- Include page numbers when you quote directly from a work, refer to specific passages, or whenever you consider it helpful for the readers. Pagination follows the year of publication after a colon and a space, e.g., “Liar (1995: 77) argued that Flipflop’s (1992: 55-56) concept of truth has been “clearly discredited” by Goodwill’s (1996: 796) deconstruction analysis.”
- For unpublished materials use “forthcoming” to refer to material scheduled for publication: (Johnson forthcoming).

3.2.9 Reference list

All publications cited in the text should be presented in a list of references. References are ordered alphabetically by authors’ names and chronologically per author. When multiple references are listed for one author, the following order should be used:

- 1) publications of a single author, arranged in chronological order
- 2) publications of the author with one co-author
- 3) publications of the author with more than one co-author.

Publications by the same author in the same year should be listed as 1999a, 1999b, etc.

Any bibliographic element which helps readers obtain a copy of the work should be included. Whenever applicable, full URL address should appear at the end of each reference concerned: Accessed from <<www.fulladdress.com>>. When possible, indicate the date of access: “Accessed 31 December 1999 from <<www.old-millennium.org>>”.

Please format your references using the style shown in the following examples. Do not abbreviate the titles of periodicals in the list of references.

Reference to a book:

Moon, E., D. Sun, and E. Star. 2000. *New galaxies*. Fifth edition, London: Supernova Publishers.

Reference to a contribution in a book:

Casanova, G. 2000. “Early modern women in a cross-cultural perspective.” In: E. Smith and G. Bart (eds.) *Gender perspectives across cultures*. Istanbul, New Athena Publishers, pp. 29-41.

Reference to a journal or magazine article

Smart, W. 2002. “IQ is declining in most human populations.” *Journal of Mental Investigation* 17(3): 215-221.

Reference to a conference paper

Speaker, A. 1999. "New methods to analyse hair density in humans and chimpanzees." Paper presented at Annual meeting of the Association for Biological Investigation, Antananarivo, 3-5 December 1999. Accessed 1 January 2000 at <<www.pathbreakingfindings.mad>>.

Research reports, working papers

Short, M. 1977. "Birth and death in the South." *Research Report 1977-02*, Small Town: Southern University.

Reference to a government publication

Statistics Papua. 2002. *Marriages in Papua in 2001*. Data Series 2001-SP 28, Port Elisabeth: Statistics Papua.

Reference to a doctoral thesis

Student, K. 2003. *Leaving home after marriage. A life-history analysis*. Doctoral Thesis. Institute for Leaving Home Research, Little Rock: University of Little Rock.

3.2.10 Appendices

Helpful but voluminous material such as mathematical derivations, complementary tables or details on the data and methods used in the article that might interrupt the flow of your paper's argument should be moved to an appendix.

Any appendices should appear after the References section and should be numbered as follows: A.1, A.2, etc. Number displayed equations occurring in the Appendix as (A.1), (A.2), etc.

Contact:

populationyearbook@oeaw.ac.at

Internet:

www.oeaw.ac.at/vid/yearbook/

Mailing address:

Tomáš Sobotka
Vienna Institute of Demography
Prinz-Eugen-Strasse 8-10
A-1040 Vienna
Austria